

Note: The area declared and established a public highway is indicated by the letters ABCDEF.

PLAT OF SISSON STREET

FROM MANTON AVE. TO ACTINIA ST.

IN TWO SHEETS
BOARD OF ALDERMEN
DECEMBER 18, 1925

PROVIDENCE, R.I.
CITY ENGINEER'S OFFICE
STREET LINE DEPT.

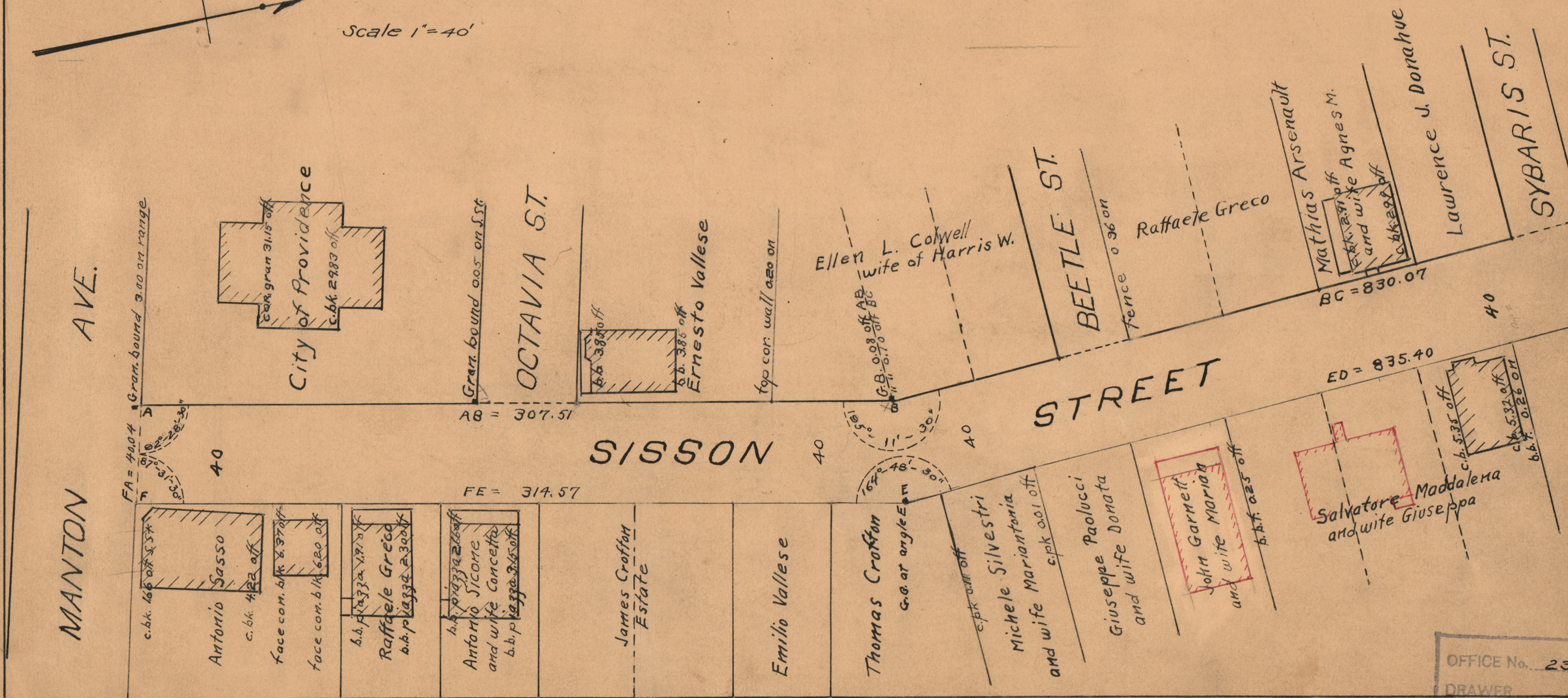
Jan. 17, 1930

052441

052441



Scale 1" = 40'



OFFICE No.	23191
DRAWN	73
SHEET	A-7