

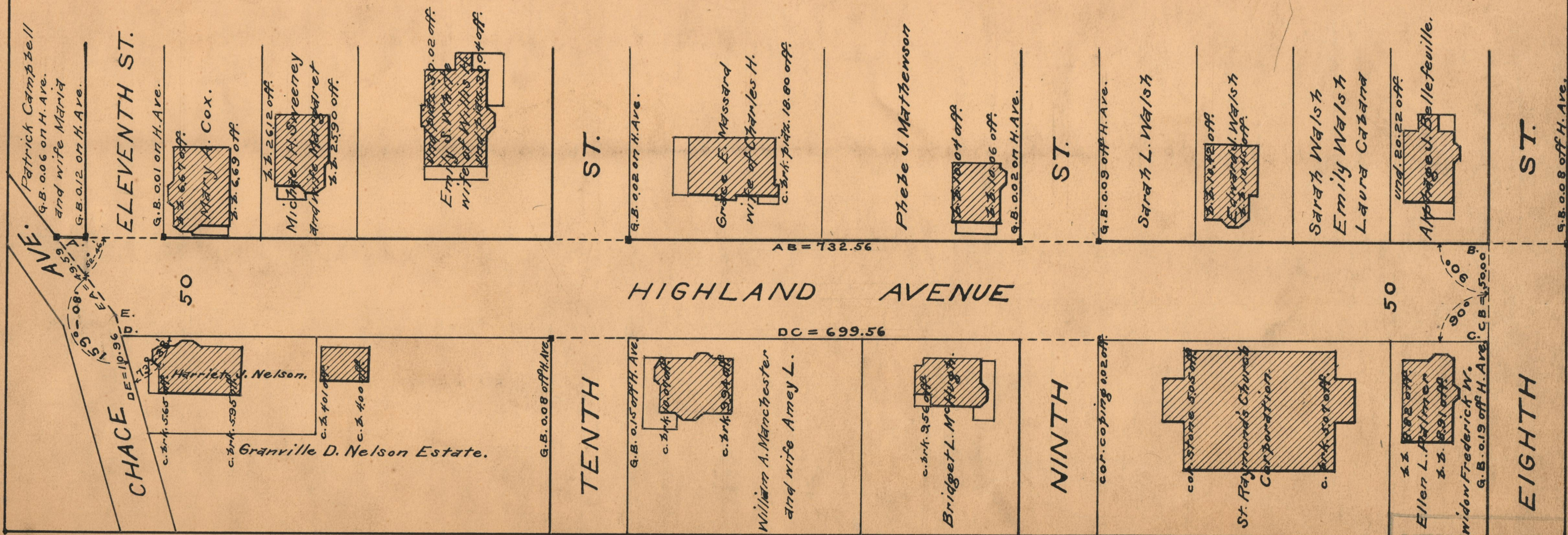
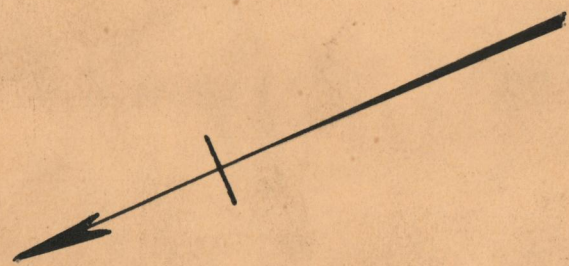
# PLAT OF HIGHLAND AVENUE

FROM EIGHTH ST. TO CHACE AVE.  
SCALE 50 FEET PER INCH

DECLARED AND ESTABLISHED A PUBLIC HIGHWAY BY RESOLUTION  
OF THE BOARD OF ALDERMEN.  
NOVEMBER 19, 1925.

PROVIDENCE, R.I.  
CITY ENGINEER'S OFFICE  
STREET LINE DEPT.

February 7, 1930.  
052487.



OFFICE NO. 23190  
DRAWER 73  
SHEET A-6