

T.F.C. 2424-55

Feb. 7, 1930

052486

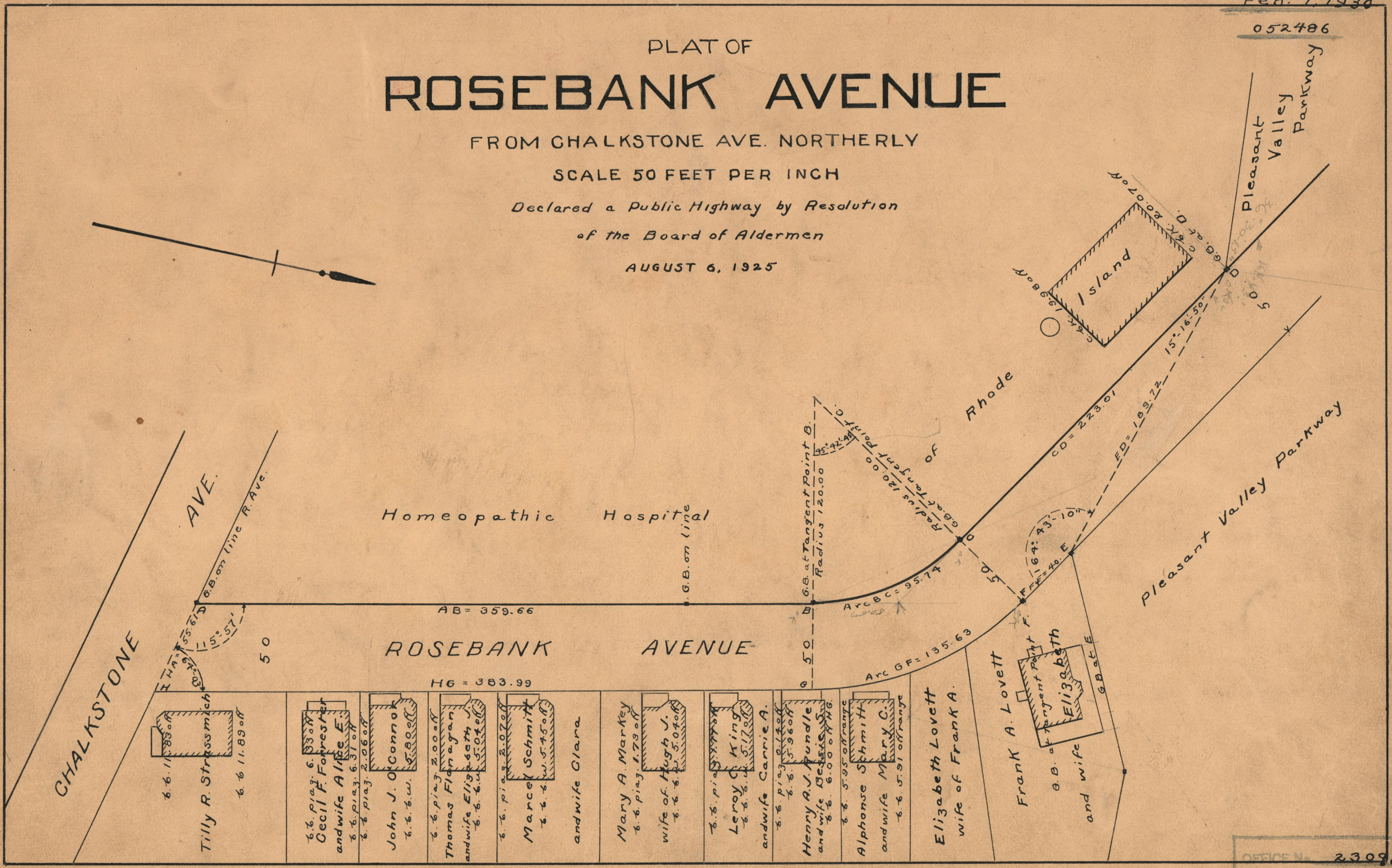
PLAT OF ROSEBANK AVENUE

FROM CHALKSTONE AVE. NORTHERLY

SCALE 50 FEET PER INCH

Declared a Public Highway by Resolution
of the Board of Aldermen

AUGUST 6, 1925



OFFICE NO. 23098
DRAWER 73
SHEET A-4