

PROVIDENCE, R.I.
CITY ENGINEER'S OFFICE
STREET LINE DEPT.

Jan. 29, 1930

052465

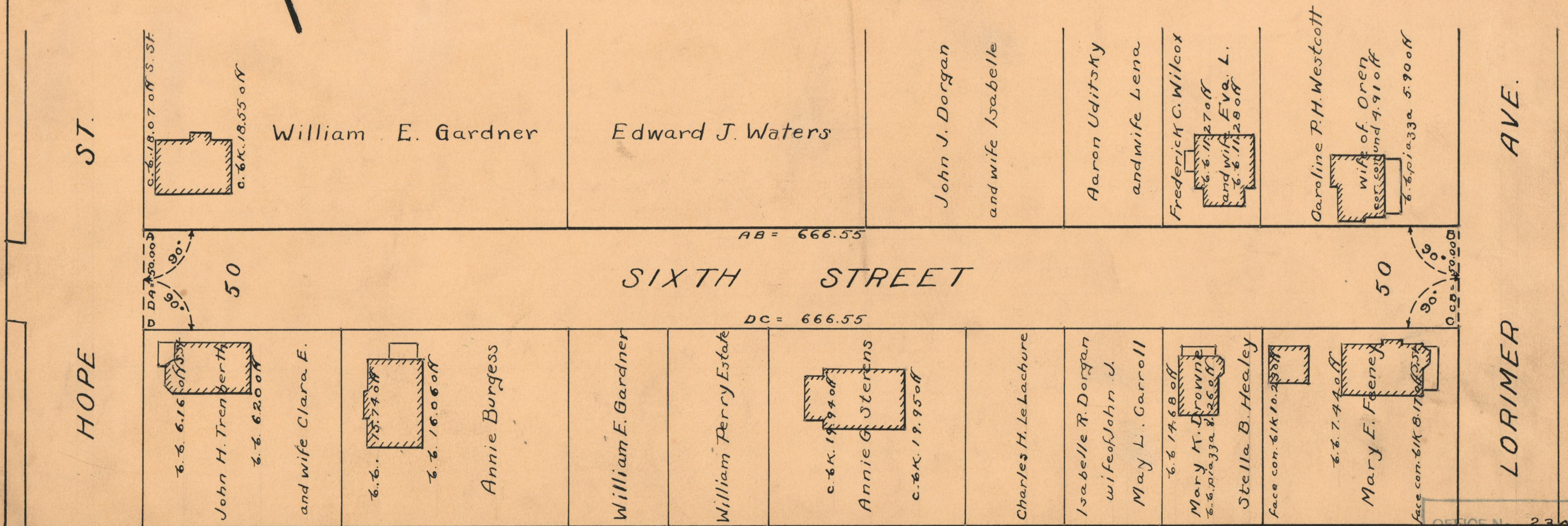
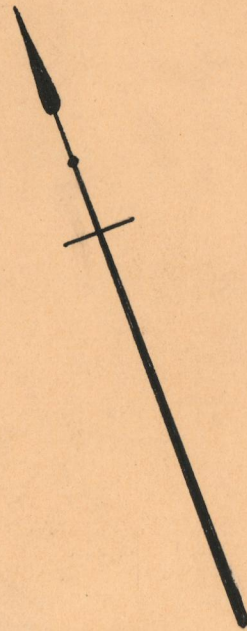
PLAT OF SIXTH STREET

FROM HOPE ST. TO LORIMER AVE.

SCALE 50 FEET PER INCH

Declared a Public Highway by Resolution
of the Board of Aldermen

AUGUST 6, 1925



OFFICE No. 23063
 DRAWER # 73
 SHEET # A-3