

PROVIDENCE, R.I.
CITY ENGINEER'S OFFICE
STREET LINE DEPT.

Jan. 29, 1930

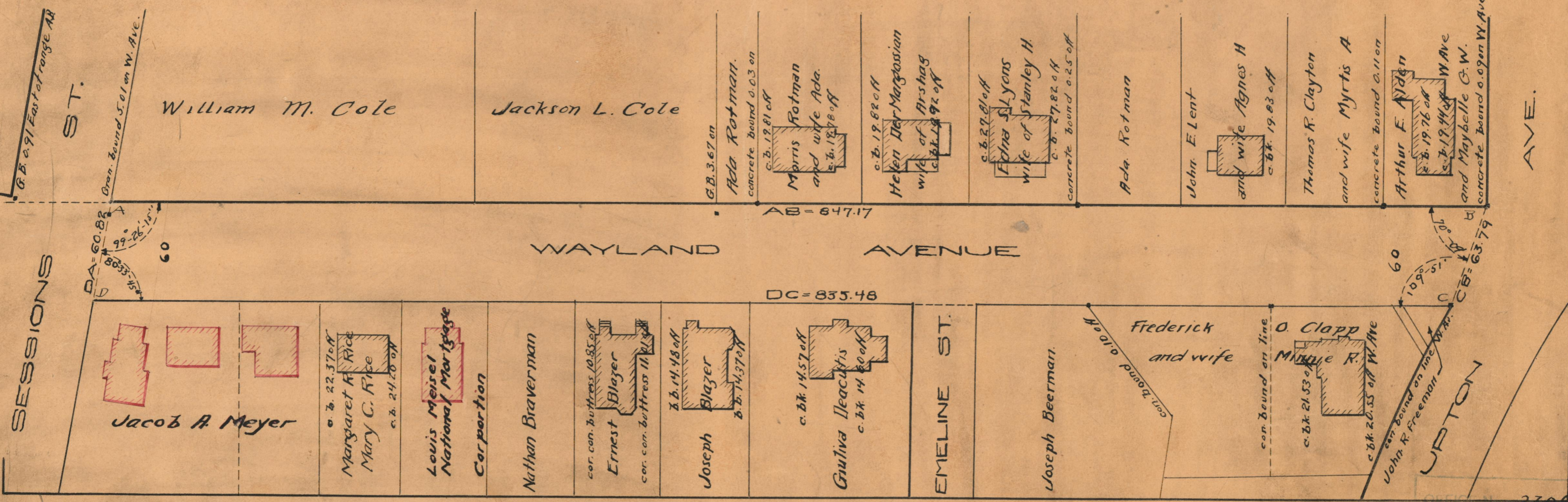
052464

PLAT OF WAYLAND AVENUE

FROM SESSIONS ST. TO UPTON AVE

SCALE 60 FEET PER INCH

Declared a public highway by Resolution of the
Board of Aldermen
March 19, 1925.



OFFICE No. 23001
DRAWER 73
SHEET A-1