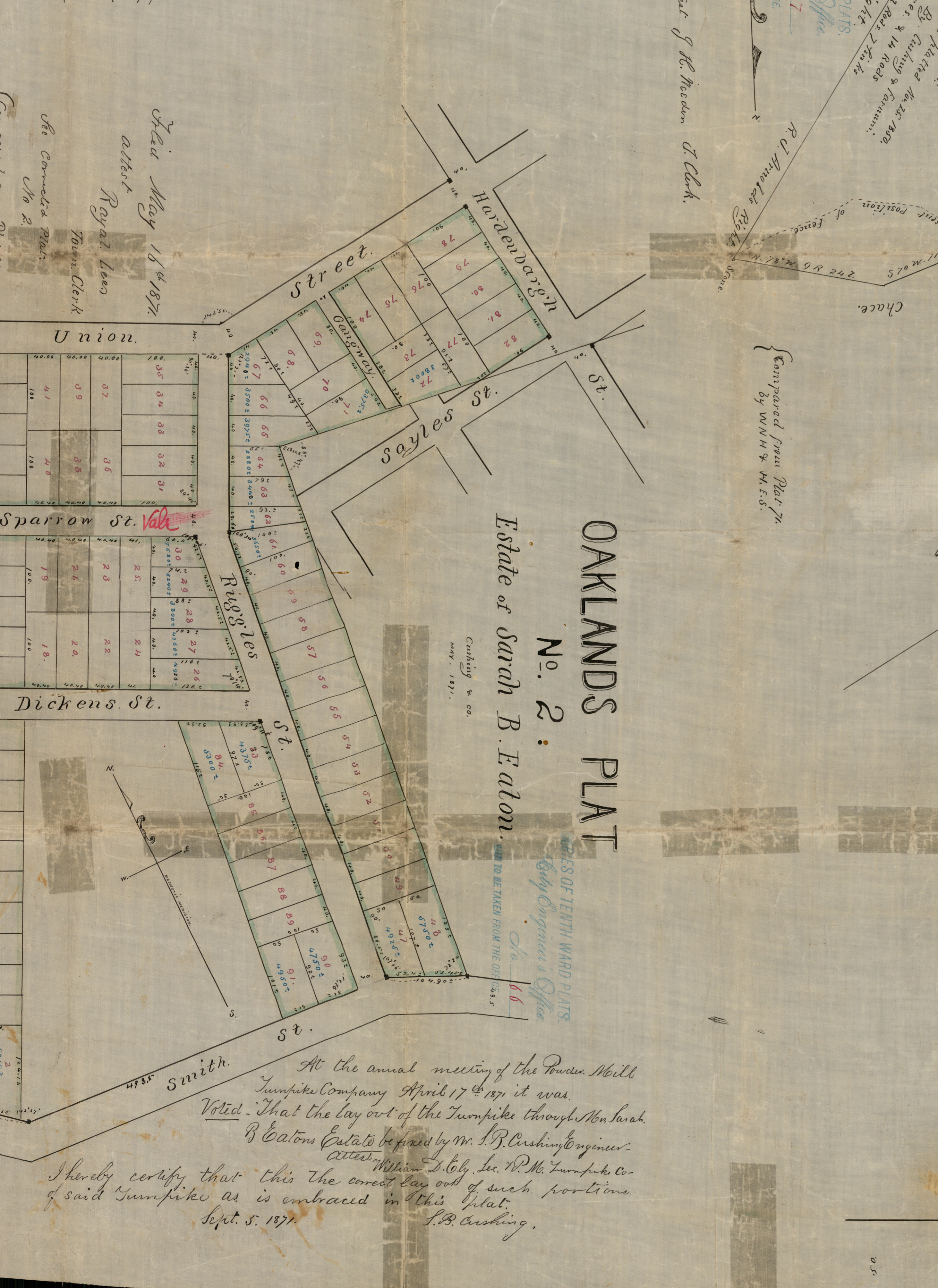
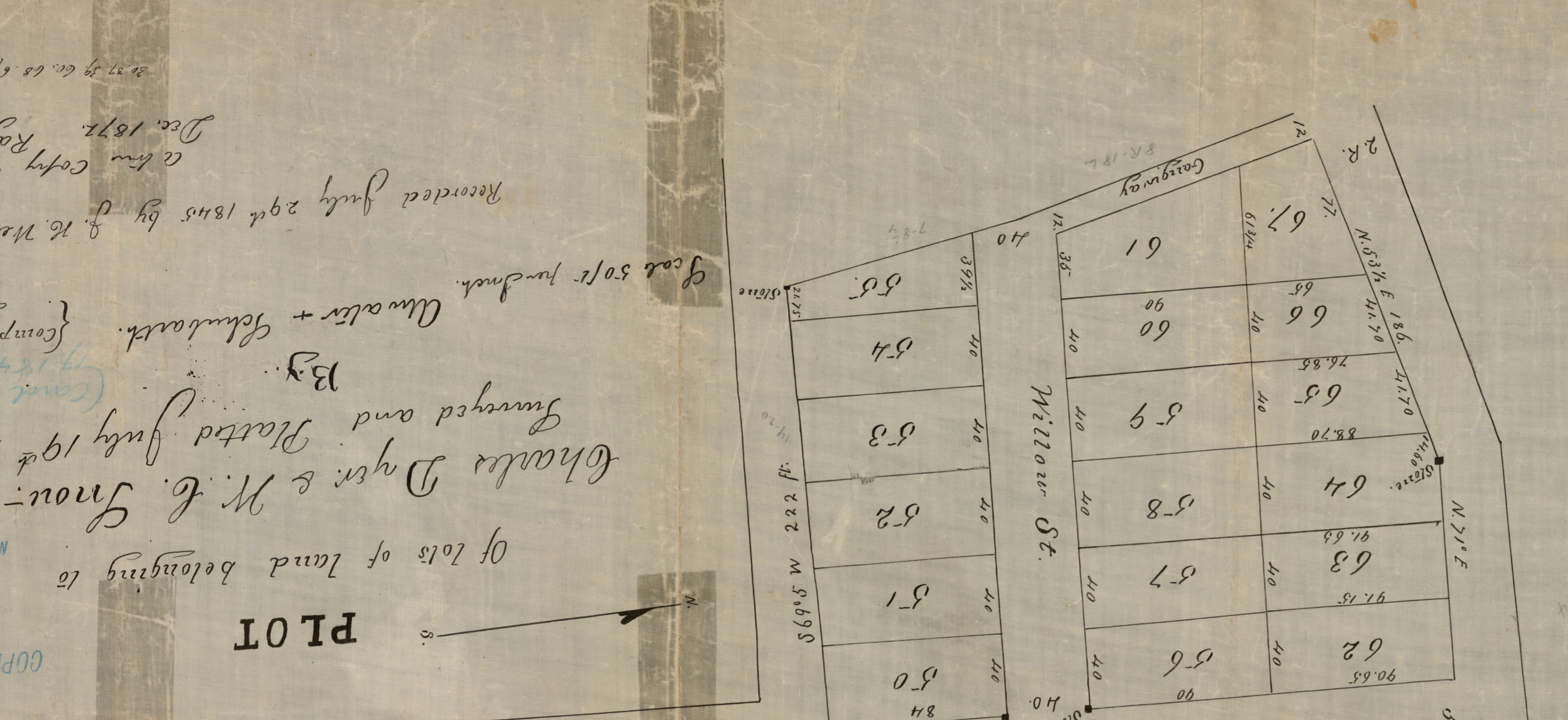


Received July 20th 1870 by H. W. H. S. Clerk
City Engineer's Office
Plotted July 19th 1870
By Charles Dyer & W. C. Brown
Checked and returned July 19th 1870
By H. W. H. S.
Checked from Plat 62
Divide interest less
Scale 50 ft. per inch.
Plotted and returned July 14, 1870.
C. Dyer & W. C. Brown
Of House Lots on Cove Heights bringing in



PLAY No. 1
OF LAND IN N. PROVIDENCE
BELONGING TO THE ESTATE OF
MRS. SARAH BEATON,
PLATTED, SEPT. 1870.
by order of
W. M. Bailey } Trustees
G. B. Angello }
Anna M. Eaton }
CITY ENGINEER'S OFFICE
No. 88
NOT TO BE TAKEN FROM THE OFFICE

Filed October 10 1870
Attest
Royal Lee
Town Clerk
See Corrected Plat No. 1



At the annual meeting of the Down Hill
Lumpkin Company April 17 1871 it was
Voted that the lay out of the Lumpkin through the
Estate of Sarah B. Eaton be approved by M. P. R. C. S. Engineer.
I hereby certify that this the correct lay out of each portion
of said Lumpkin as is embraced in this plat.
Sept. 5. 1870
P. B. C. S. Engineer.

Received July 20th 1870 by H. W. H. S. Clerk
City Engineer's Office
Plotted July 19th 1870
By Charles Dyer & W. C. Brown
Checked and returned July 19th 1870
By H. W. H. S.
Checked from Plat 62
Divide interest less
Scale 50 ft. per inch.
Plotted and returned July 14, 1870.
C. Dyer & W. C. Brown
Of House Lots on Cove Heights bringing in