

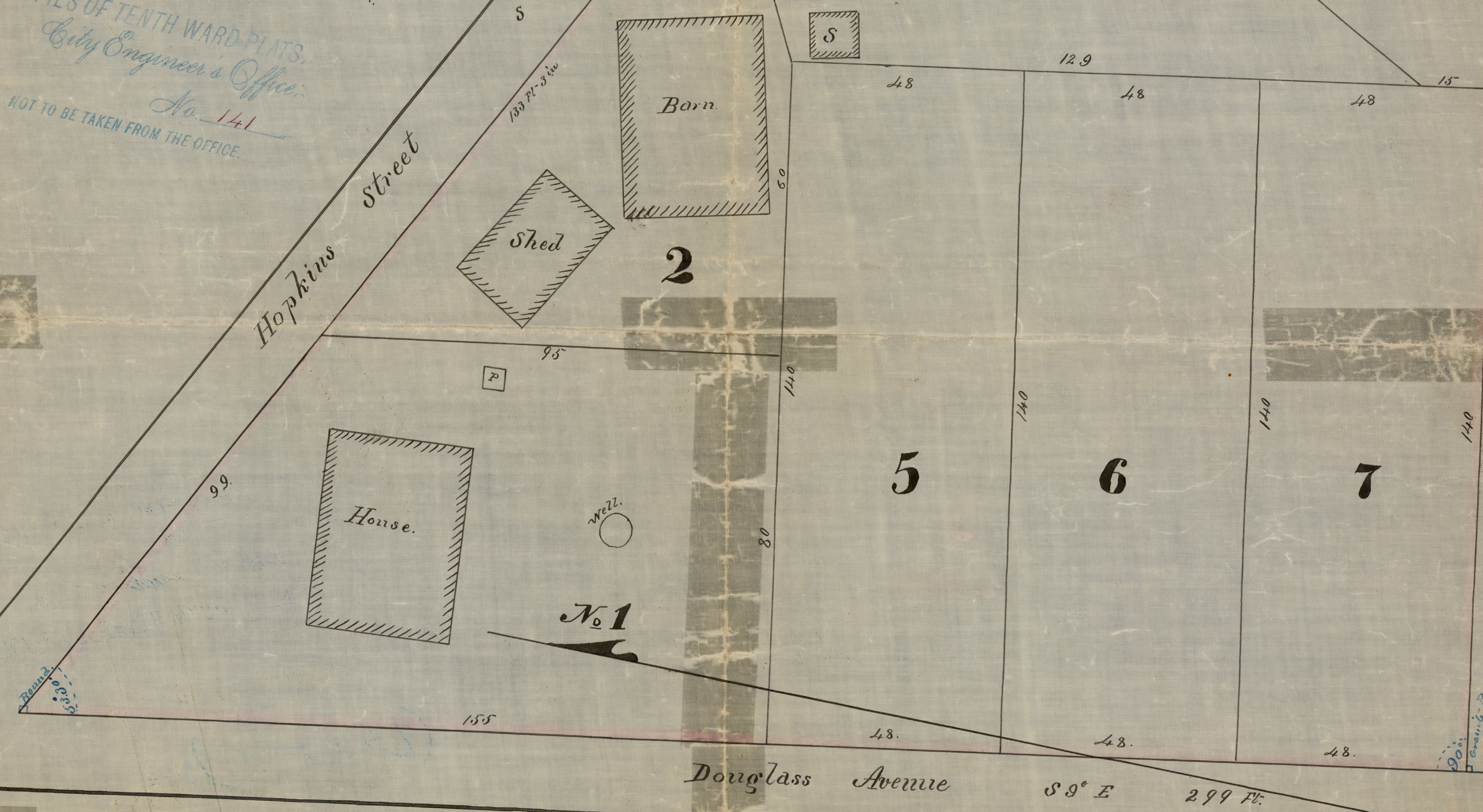
Scale 40 Ft per inch.
Compared from Plat 27
by W.N.H. & H.E.S.
City Engineer's Office
No. 142
NOT TO BE TAKEN FROM THE OFFICE

Pine Grove Lots on Smiths Hill.
OF PART OF THE
SAMUEL HEDLY'S PLAT

1	2	3	4	5	6	7	8	9	10	11	12
1/2	1/2	1/2	1/2	1/2	1/2	1/2	1/2	1/2	1/2	1/2	1/2
1000	1000	1000	1000	1000	1000	1000	1000	1000	1000	1000	1000

PLAT
of the
Eagle Park
ESTATE NORTH PROVIDENCE

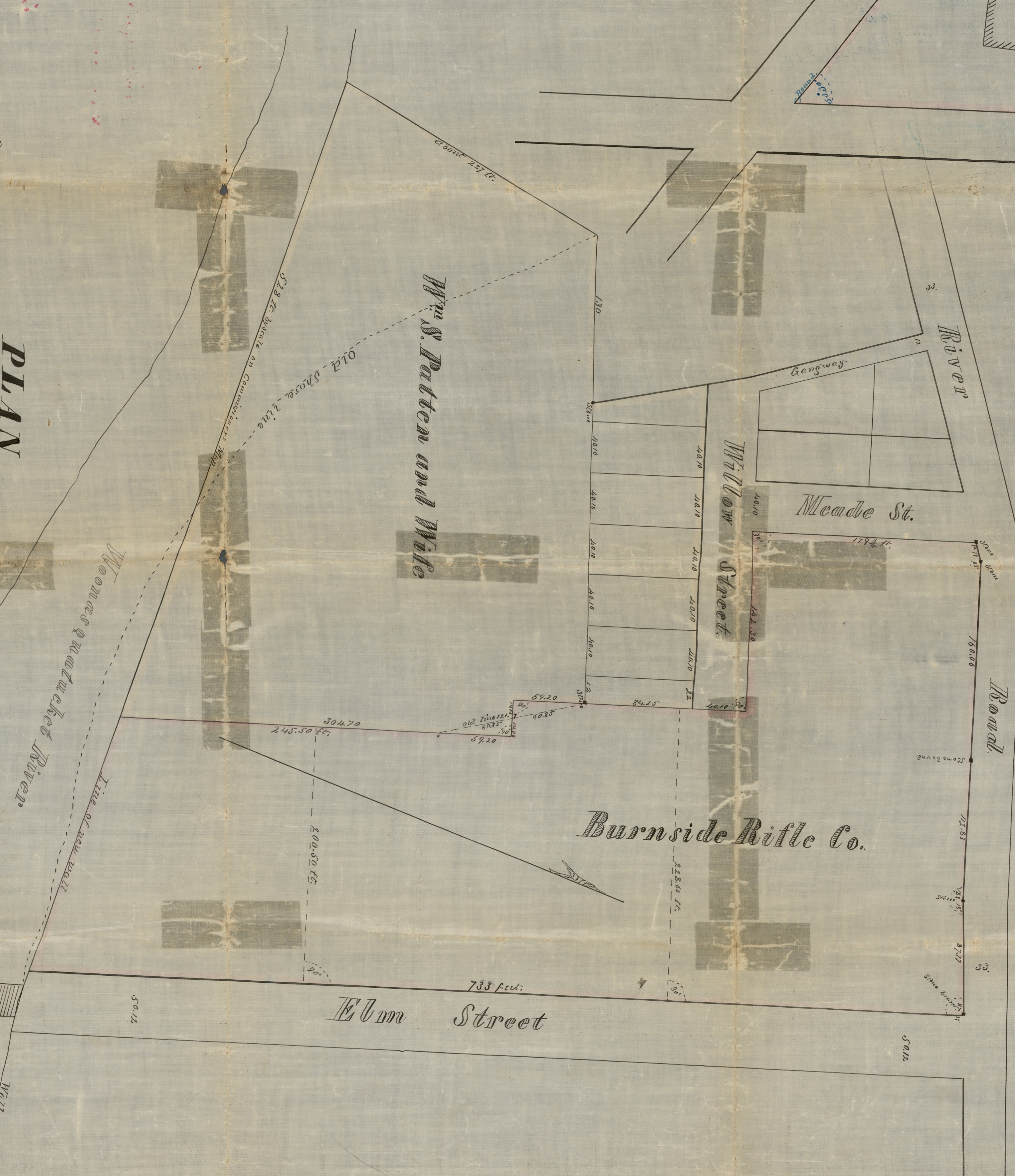
Belonging to Atlas Bank
1864 (Card 327)
By E. O. ANGELL
Compared from 55th Plat
By W.N.H. & H.E.S.
COPIES OF TENTH WARD PLATS
City Engineer's Office
No. 141
NOT TO BE TAKEN FROM THE OFFICE



PLAN
of Streets as agreed between the
BURNSIDE RIFLE CO.
and
Wm. S. PATTON and Wife

Wm. S. PATTON and WIFE
Drawn by J. HOME
City, 1863

COPIES OF TENTH WARD PLATS
City Engineer's Office
No. 140
NOT TO BE TAKEN FROM THE OFFICE



"Stated Common", Wood lot, in N. Providence.
Plat. of that part of the estate
of the late
Ann Allen.
situated in
North Providence.
Surveyed & platted,
By S.B. Cushing & H.A. DeWitt.
June, 1860.

U.S. measure.
Scale, 8 Rods to an inch.
COPIES OF TENTH WARD PLATS
City Engineer's Office
No. 139
NOT TO BE TAKEN FROM THE OFFICE
Compared from Plat 35
By W.N.H. & H.E.S.
(Card 327)