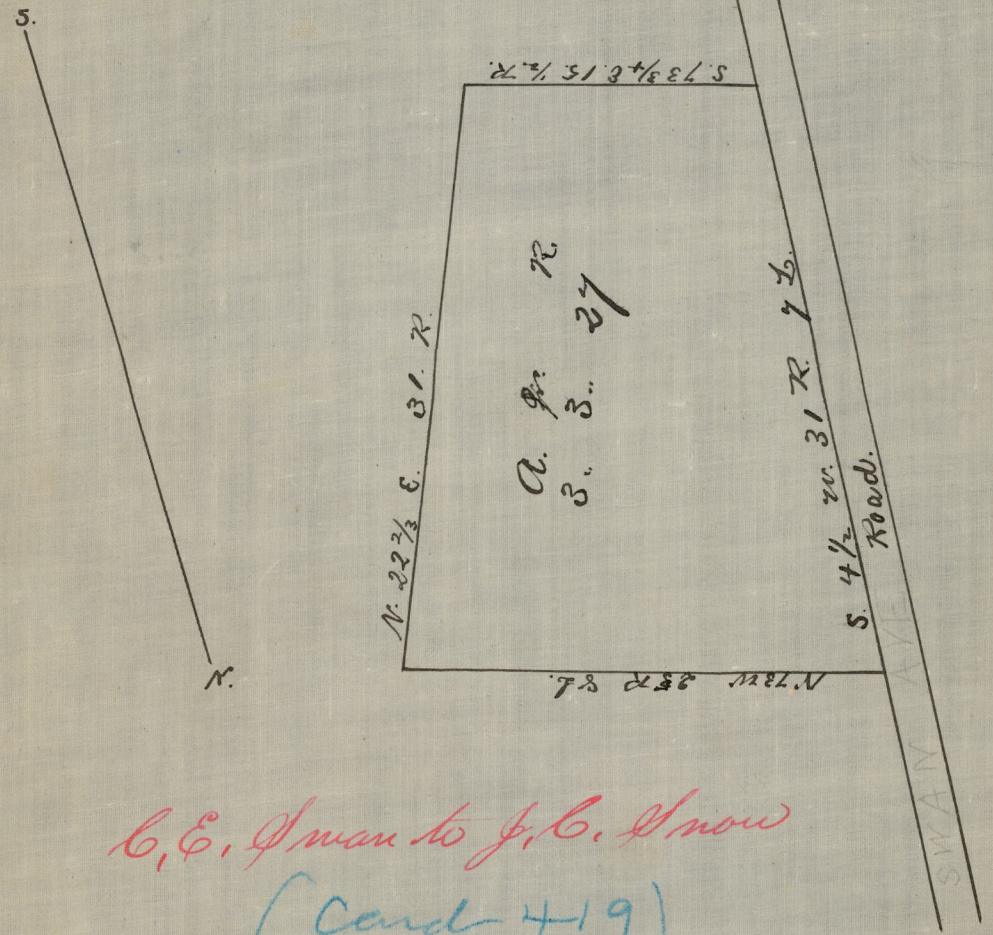


Book 12, Page 284

Pawtucket Records

Compared Dec 14, 1876
A.H. Combe



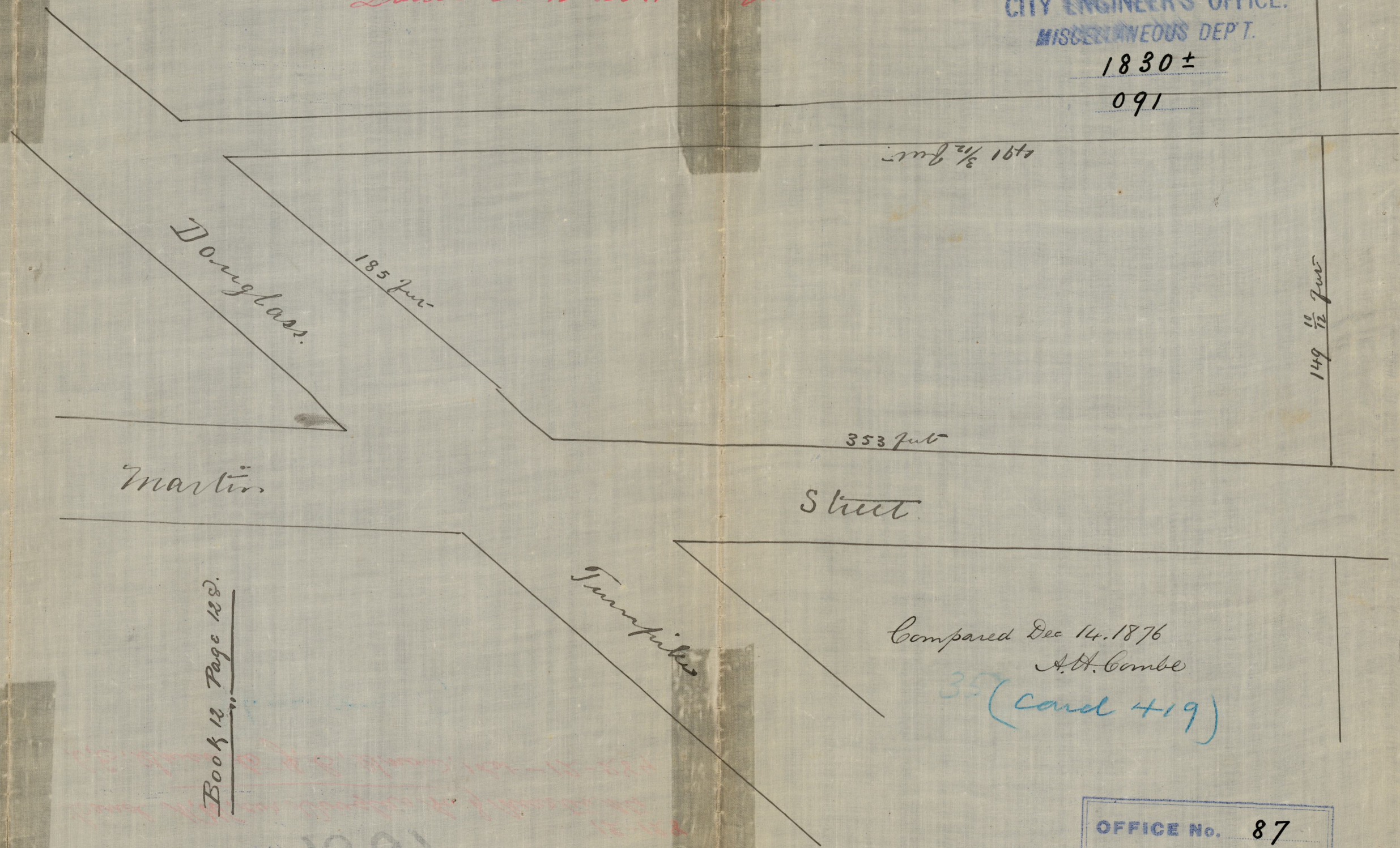
C. C. Swan to J. C. Snow
(Card 419)

81
25 u 39

Land N.W. Cor. Douglas T.P. and Martin St

CITY ENGINEER'S OFFICE.
MISCELLANEOUS DEPT.

1830 ±
091



Book 12, Page 128.

Compared Dec 14, 1876
A.H. Combe

35 (Card 419)

OFFICE No.	87
DRAWER "	72
SHEET "	N-36

1201
KK 1339