

CITY ENGINEER'S OFFICE
MISCELLANEOUS DEPT.

CITY ENGINEER'S OFFICE
MISCELLANEOUS DEPT.

1837
0121

{ Copied from Card 90 }
at Pawtucket

Scale of ten rods to an inch.

Plat of Alfred Olney d^d farm
divided amongst his heirs

Surveyed Dec. 1837
10 rods to an inch -
by Lemuel Angell Sur.

(Card 370)

Dorcas N^o 6
Acres 9¹/₂ rods
16 - 0 - 25

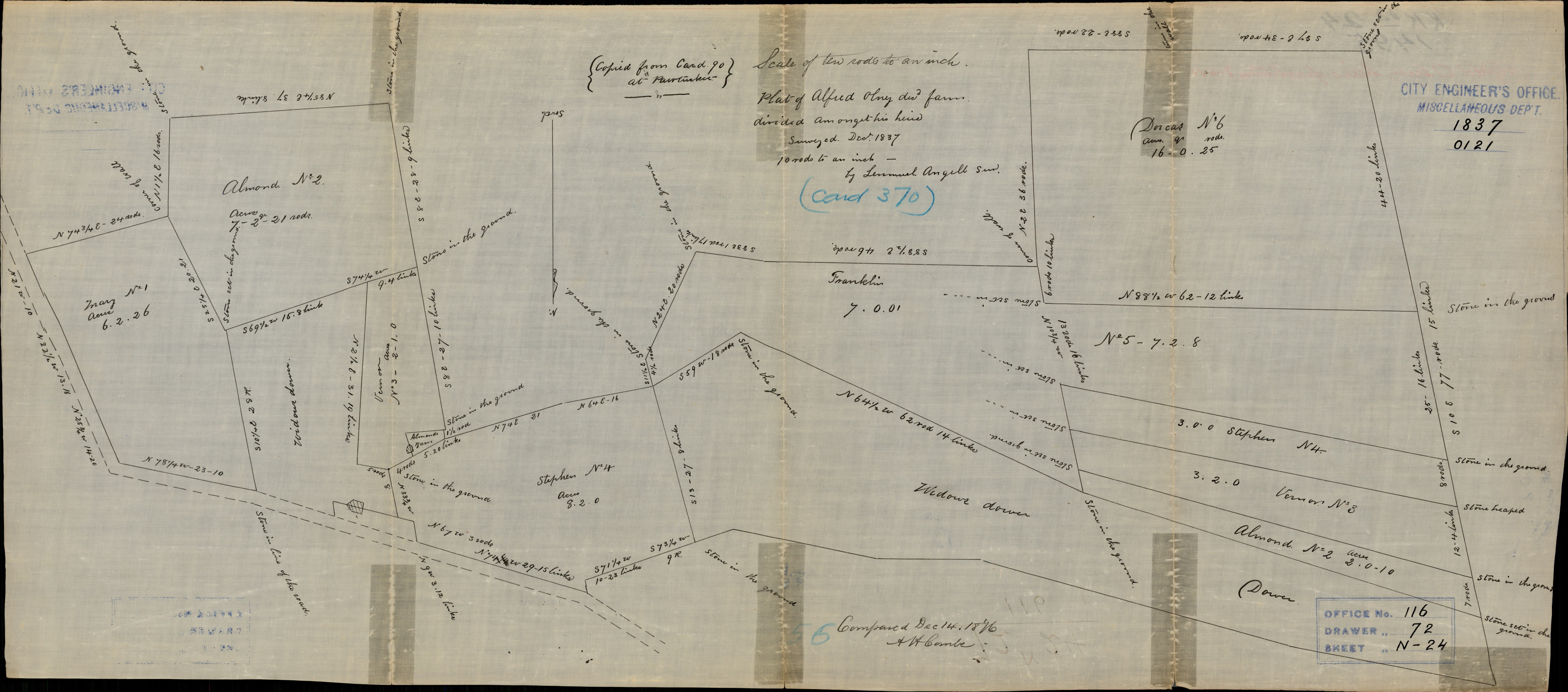
Franklin
7.0.01

N^o 5 - 7.2.8

Stephen N^o 4
Acres 8.2.0

Almond N^o 2
Acres 7 - 2 - 21 rods

Mary N^o 1
Acres 6.2.26



OFFICE No. 116
DRAWER ,, 72
SHEET ,, N-24

56 Compared Dec 14, 1876
A. H. Combs