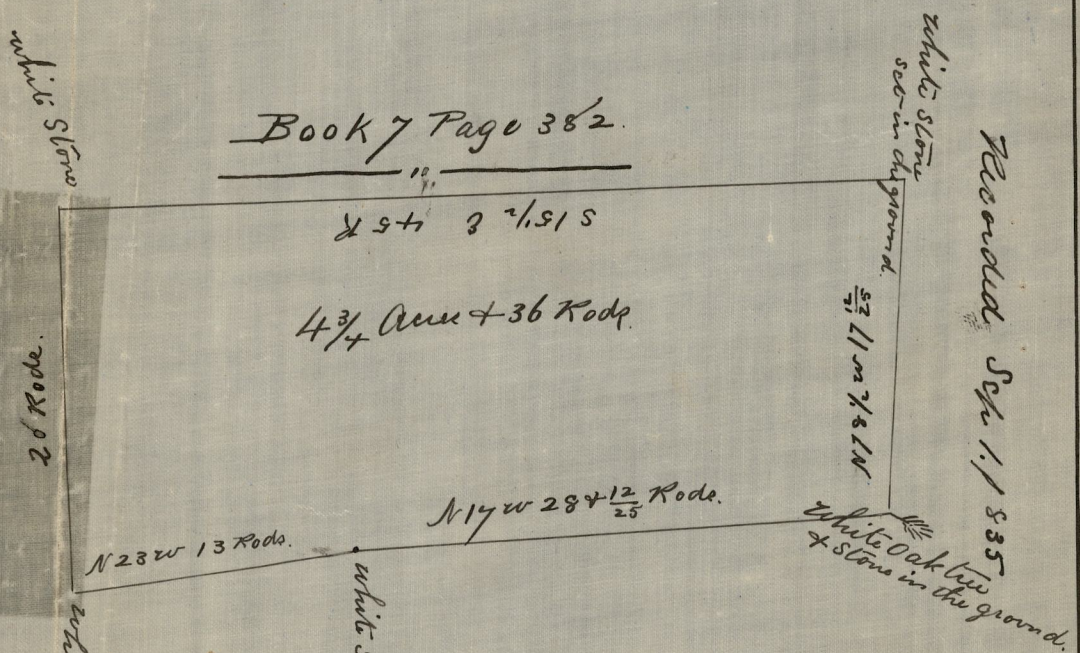


Plat of flowage land sold to Doct Stephen Randall and surveyed Aug 18. 1835 and Platted from a Scale of ten rods to the inch - by Lemuel Angell Surveyor.
 Compared Dec 14 1876
 A. H. Combe

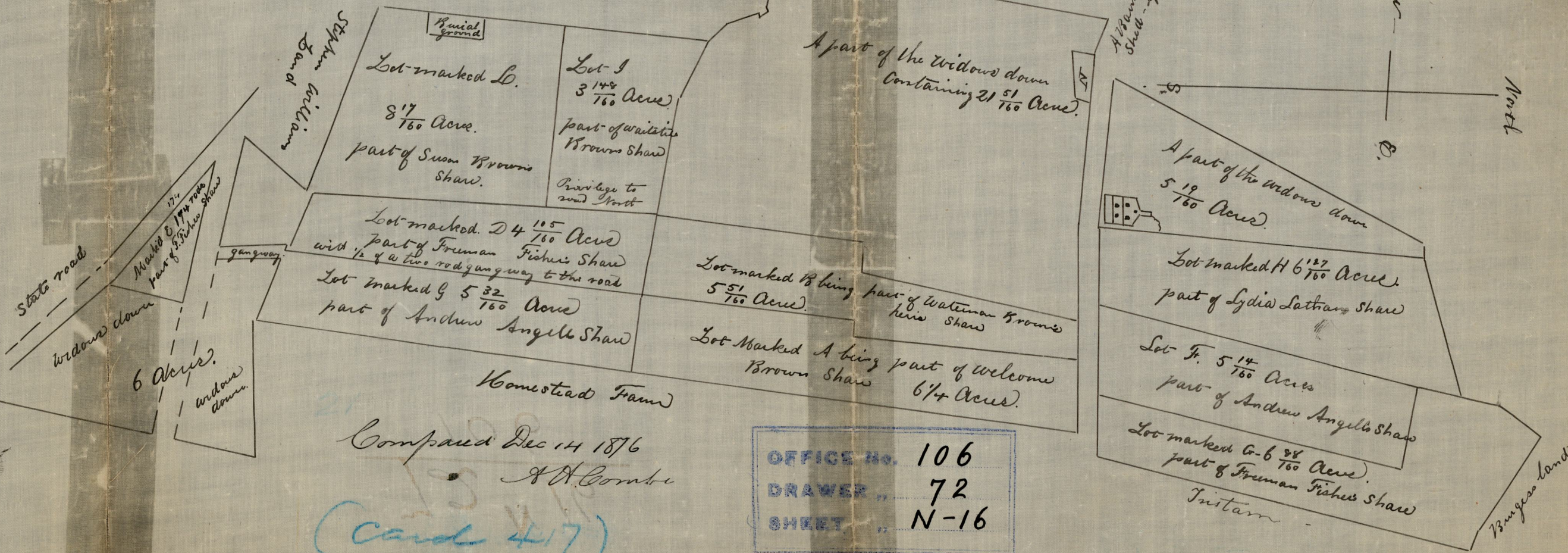
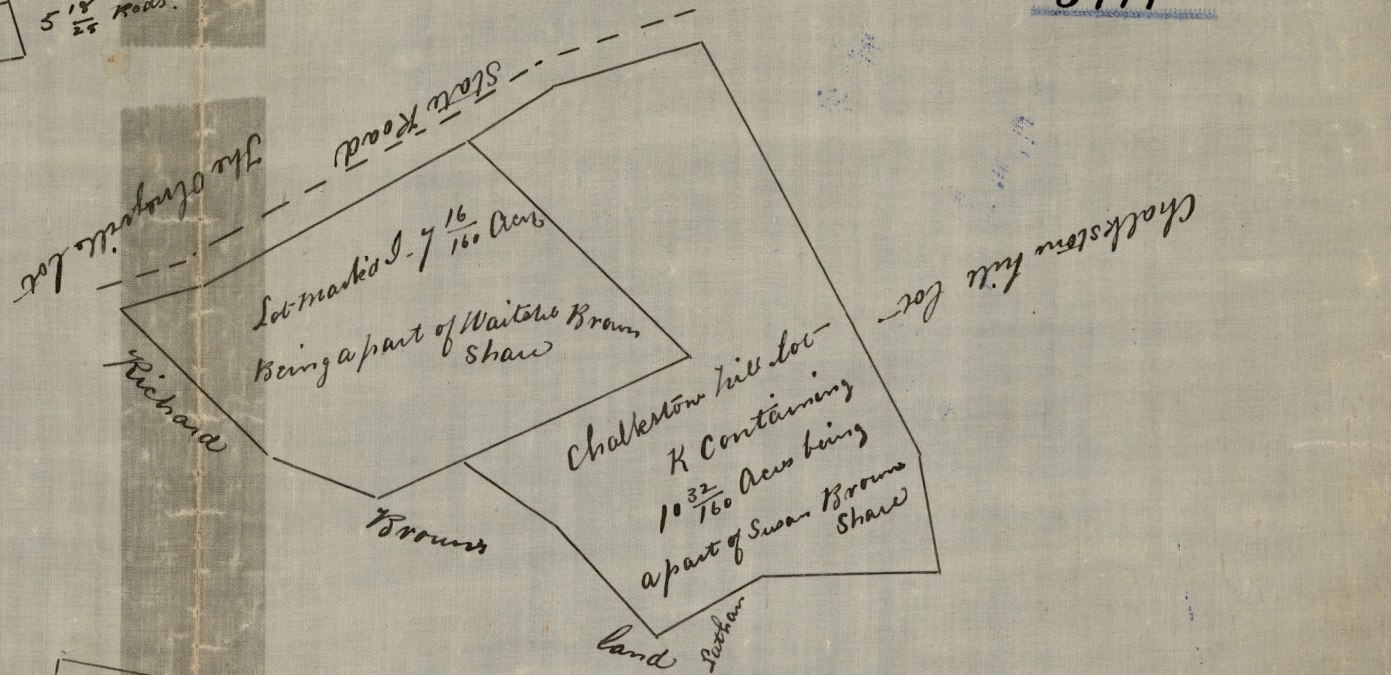
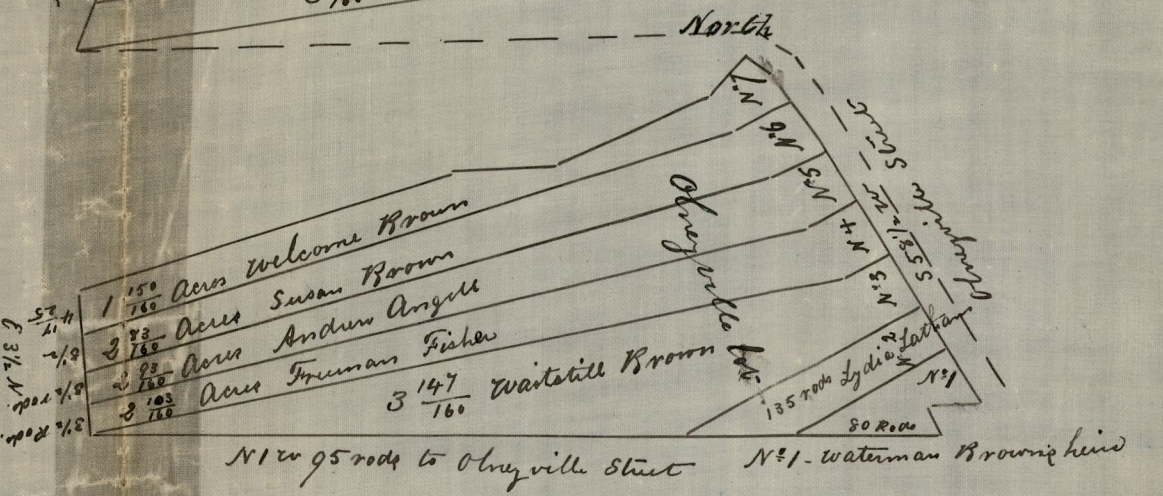


A Plat of flowage land sold to Stephen Randall Junr and surveyed Aug. 18. 1835 and platted from Scale of ten Rods to the inch By Lemuel Angell Surveyor.
 Compared Dec 14 1876
 A. H. Combe

(card 417)

1835
 0111

2 ⁴⁶ / ₁₆₀ Acres	Watima Brown heirs	N ^o 7
3 ¹⁰ / ₁₆₀ Acres	Susan Brown	N ^o 6
3 ³⁵ / ₁₆₀ Acres	Welcome Brown	N ^o 5
3 ³⁵ / ₁₆₀ Acres	Freeman Fisher	N ^o 4
3 ¹⁷ / ₁₆₀ Acres	Andrew Angell	N ^o 3
3 ¹⁰ / ₁₆₀ Acres	Lydia Latham	N ^o 2
3 ¹³⁷ / ₁₆₀ Acres	Waittill Brown	N ^o 1



Compared Dec 14 1876
 A. H. Combe

(card 417)

OFFICE No. 106
 DRAWER " 72
 SHEET " N-16