

THE EAST AVENUE PLAT.

Platted by S. B. Cushing & Co.

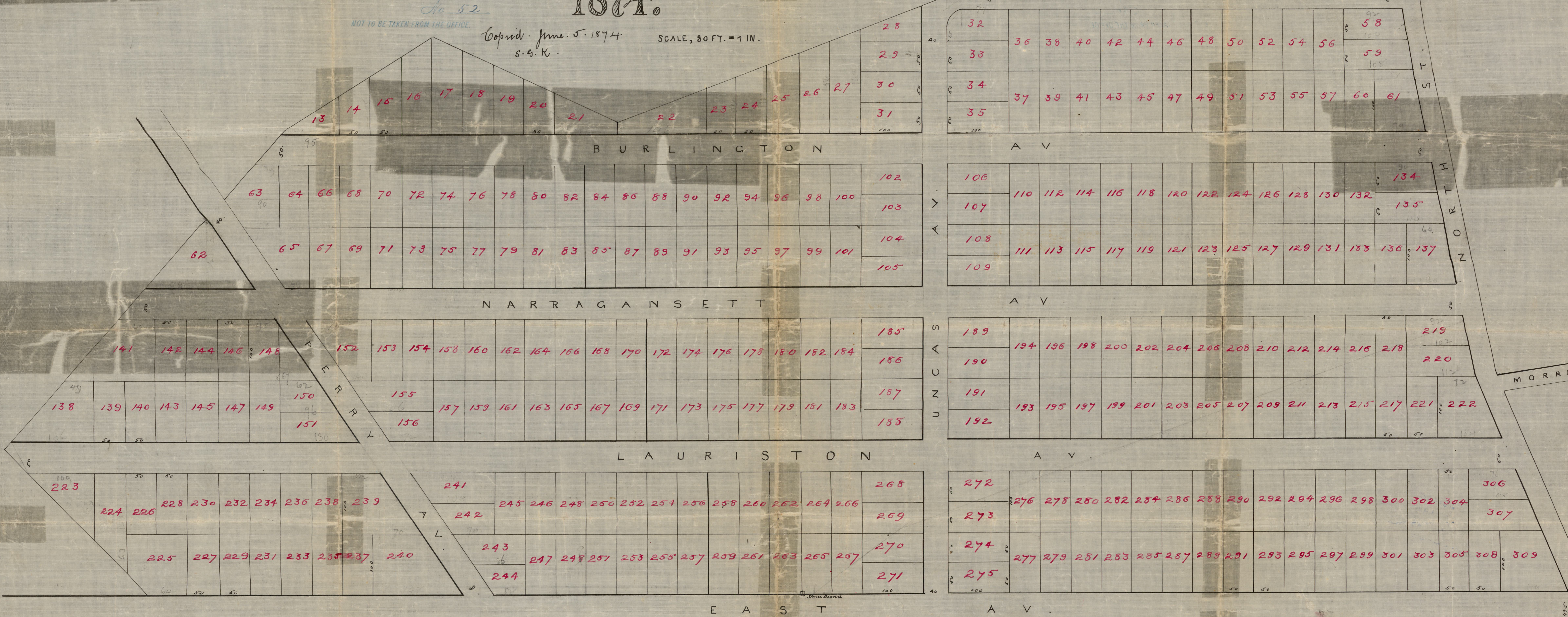
1874.

COPIES OF TENTH WARD PLATS
City Engineer's Office
No. 51

NOT TO BE TAKEN FROM THE OFFICE.

Copyright June 5, 1874
S. B. C.

SCALE, 80 FT. = 1 IN.

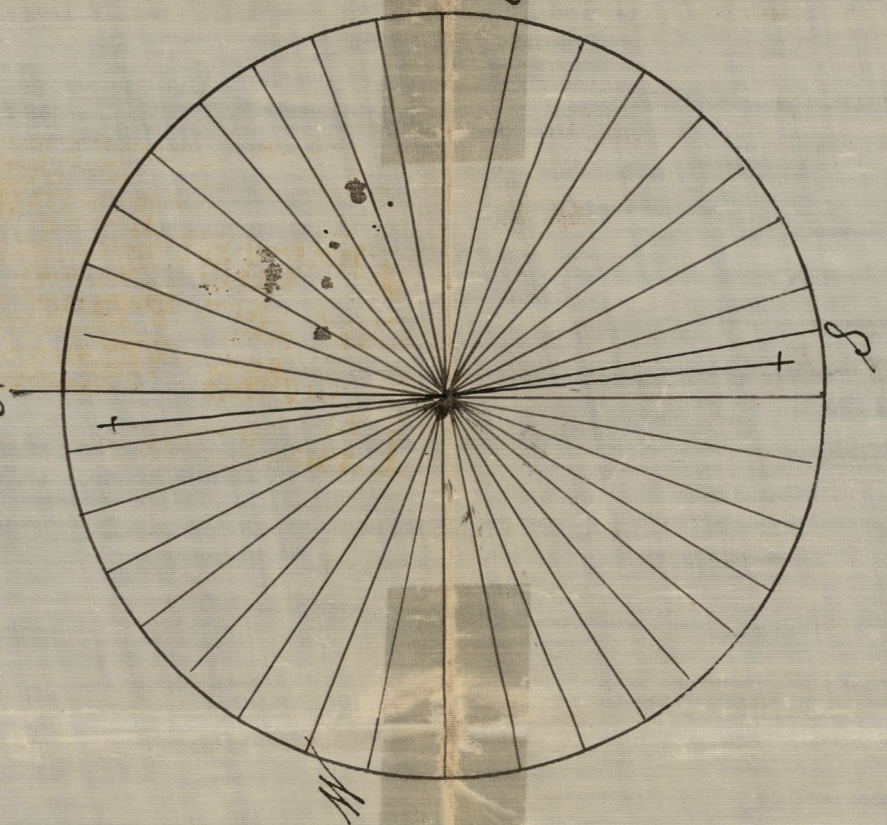


No	Owner	Acres	M. S.	E. S.	S. L.	M. S.	Acres	North Area	South Area
1	S. B. C.	57.216	4.94		47.96		57.216	1274.7765	
2	M. S. C.	57.112	4.94				102.50		
3	M. S. C.	43.	42.72				1449.4884		
4	M. S. C.	14.	1.1				150.97		
5	M. S. C.	14.	1.1				132.14		
6	M. S. C.	17.	16.74				140.7657		
7	M. S. C.	23.5	2.22				203.1390		
8	M. S. C.	19.15					224.6662		
9	M. S. C.	41.20					1562.0220		
							80.85		
							41.79		
							00.00		
							2.74		
							19.32		
							0.73		
							41.79		
							94138227		
							28673658		
							2185265772		
							4132732556		
							326		
							73		
							26673658		
							22406732386		

A Plat of Collins Chace Farm containing by extension 200 73rr

CITY ENGINEER'S OFFICE
No. 51

NOT TO BE TAKEN FROM THE OFFICE.



Direction of the Charles C. St. waterward

Scale Dimensions to an inch

Copyright & compared -
from a plat in the possession of
Collins Chace, Pl. Prop.
June 5, 1874.

S. B. C.

M. S. C.

North Providence May 24 1873

Plat of Collins Chace Farm