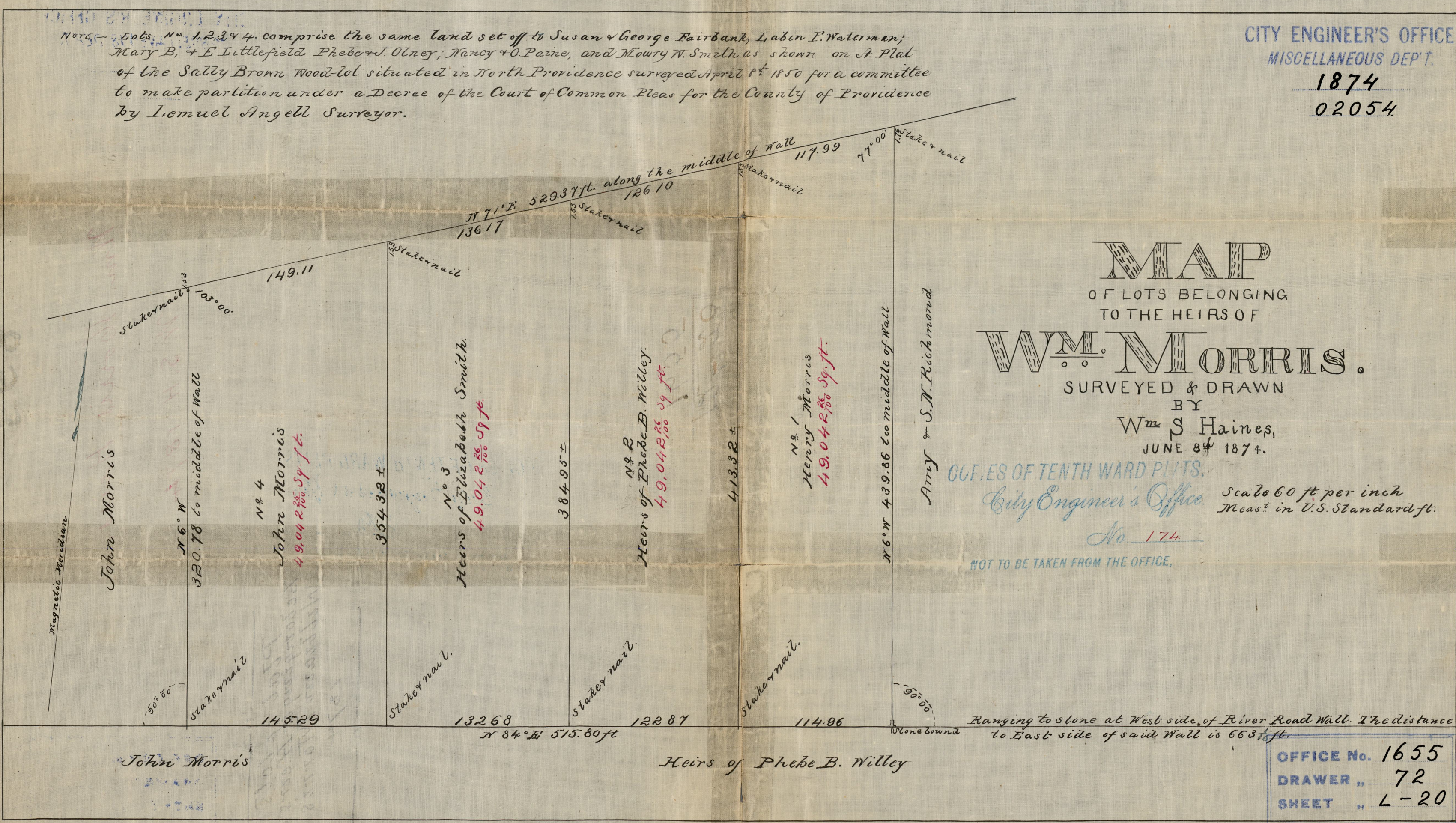


CITY ENGINEER'S OFFICE
 MISCELLANEOUS DEPT.
 1874
 02054

Note - Lots Nos 1, 2, 3 & 4 comprise the same land set off to Susan & George Fairbank, Labin I. Waterman; Mary B. & E. Littlefield Phebe & J. Olney; Nancy & O. Paine, and Mowry W. Smith as shown on A. Plat of the Sally Brown Wood-lot situated in North Providence surveyed April 8th 1850 for a committee to make partition under a Decree of the Court of Common Pleas for the County of Providence by Lemuel Angell Surveyor.



MAP
 OF LOTS BELONGING
 TO THE HEIRS OF
Wm. MORRIS.
 SURVEYED & DRAWN
 BY
 Wm S Haines,
 JUNE 8th 1874.
 OFFICES OF TENTH WARD PLATS,
 City Engineer's Office.
 No. 174
 NOT TO BE TAKEN FROM THE OFFICE.

Scale 60 ft per inch
 Meas^t in U.S. Standard ft.

Ranging to stone at West side of River Road Wall. The distance to East side of said Wall is 663 ft.

OFFICE No. 1655
 DRAWER ,, 72
 SHEET ,, L-20