

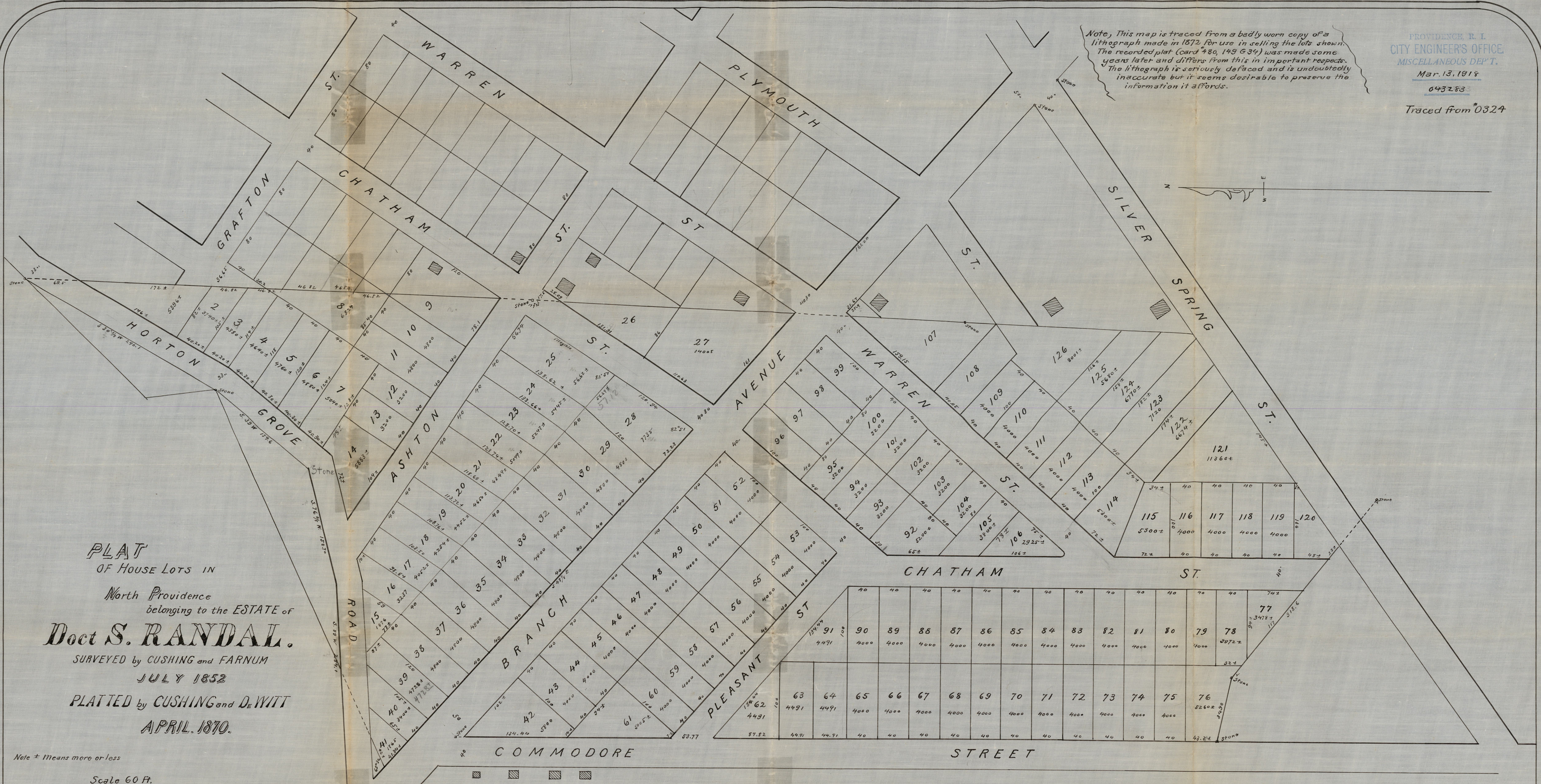
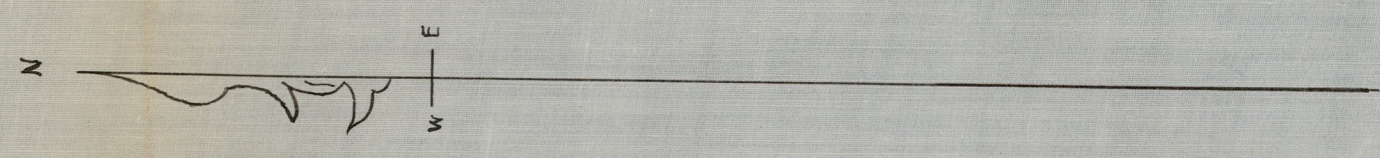
Note, This map is traced from a badly worn copy of a lithograph made in 1872 for use in selling the lots shown. The recorded plat (card #80, 149 634) was made some years later and differs from this in important respects. The lithograph is seriously defaced and is undoubtedly inaccurate but it seems desirable to preserve the information it affords.

PROVIDENCE, R. I.  
CITY ENGINEER'S OFFICE  
MISCELLANEOUS DEPT.

Mar. 13, 1918

643283

Traced from #0324



**PLAT**  
OF HOUSE LOTS IN  
North Providence  
belonging to the ESTATE of  
**Doct S. RANDAL.**  
SURVEYED by CUSHING and FARNUM  
JULY 1852  
PLATTED by CUSHING and DE WITT  
APRIL 1870.

Note ± Means more or less  
Scale 60 Ft.

OFFICE No. 314  
DRAWER 72  
SHEET L-15