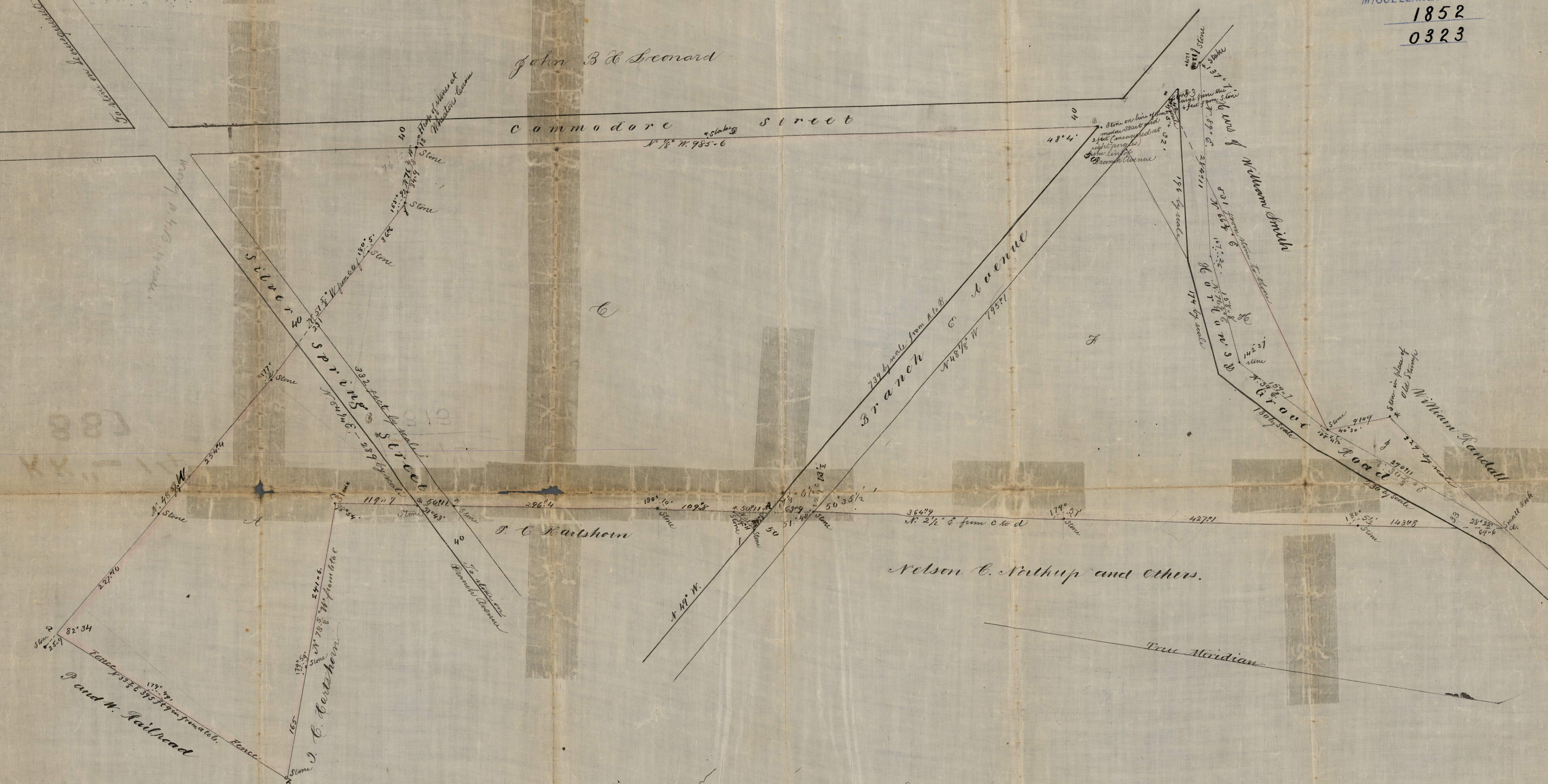


CITY ENGINEER'S OFFICE.
MISCELLANEOUS DEPT.
1852
0323



Areas

Lot	Description	Area
A	between Railroad and Silver Spring Street	3.19
B	portion of Silver Spring Street bounded by three streets including one half the width of Commodore St.	9.92
C	included in Branch Avenue	47
D	between Branch Avenue and Horton's Green Road	91
E	included in Horton's Green Road	5.71
F	Northwest of Horton's Green Road	.57
G		.59
H		2.6
I		21.13
J	Total Area	

Note. The bounds marked with a star (*) were set by the present surveyors; the others are located on the plat as found on the ground at the time of the present survey.

Copies from a plat in the possession of
Comptrol H. E. Sherman.

Part of Land in North Providence belonging to
Stephen Randall
Surveyed and Platted July 1852
By Cushing and Tammin

COPIES OF TENTH WARD PLATS.
City Engineer's Office.

So 4.
NOT TO BE TAKEN FROM THE OFFICE.

OFFICE No. 313
DRAWER " 72
SHEET " L-14

Scale 100 feet to an Inch
Measured by United States Measure