

COPY

Compared  
F. M. Bowen

CITY ENGINEER'S OFFICE.  
MISCELLANEOUS DEPT.  
1873  
01600

Note  
The dotted red line shows the former division line between W. Angell & A. Kerr.  
The full " " " " present " " " " " " " "

PLAT OF  
WATERMAN, B. ANGELL.

FARM SITUATED ON THE POWDER  
MILL TURNPIKE, 10<sup>TH</sup> WARD.

Surveyed by S. B. Cushing.

Scale 100 feet per inch.

FEBRUARY 28<sup>TH</sup> 1873

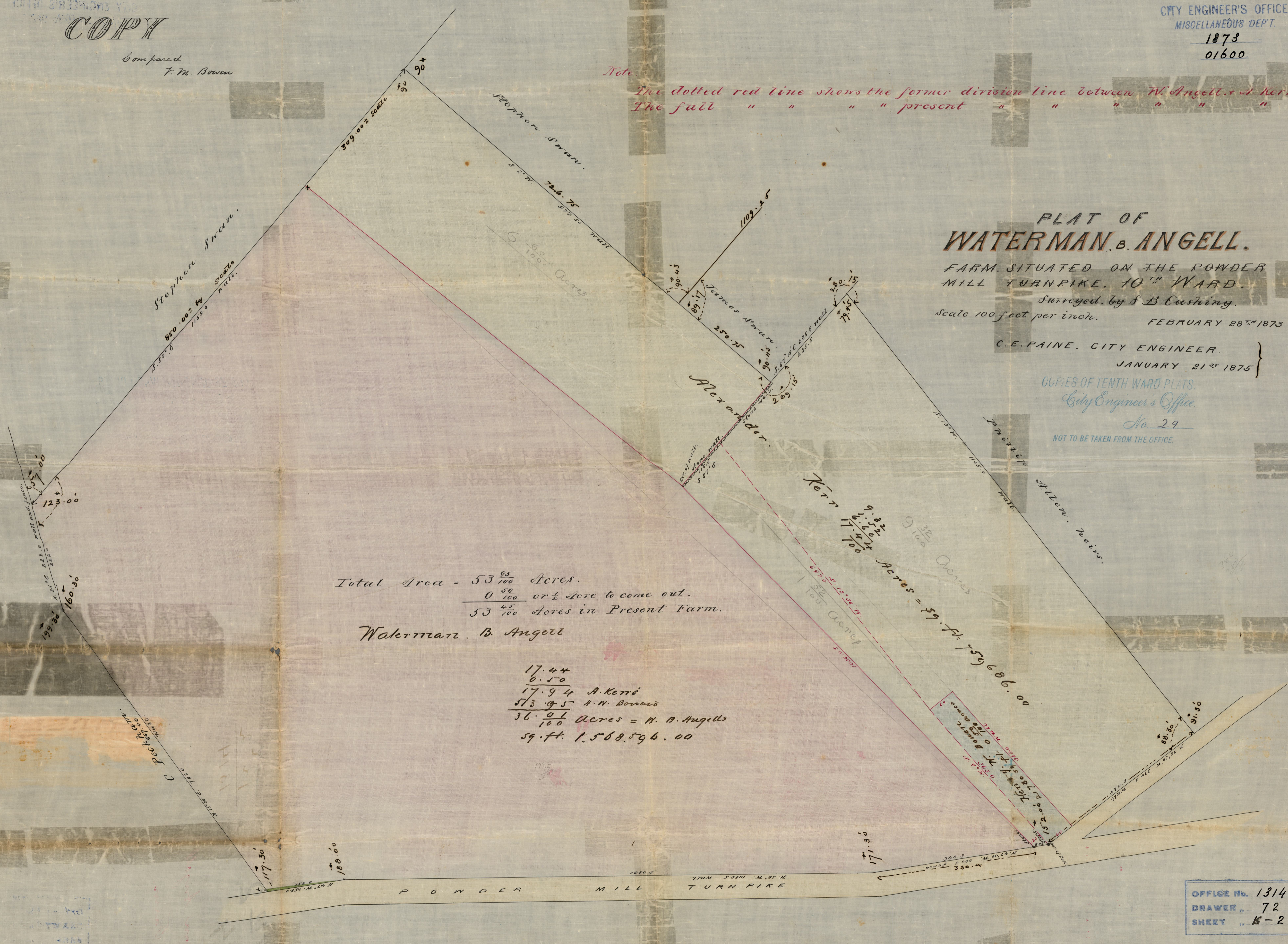
C. E. PAINE, CITY ENGINEER.

JANUARY 21<sup>ST</sup> 1875

COPIES OF TENTH WARD PLATS.  
City Engineer's Office.

No. 29

NOT TO BE TAKEN FROM THE OFFICE.



Total Area =  $53 \frac{95}{100}$  Acres.  
 $\frac{0 \frac{50}{100}}$  or  $\frac{1}{2}$  Acre to come out.  
 $53 \frac{45}{100}$  Acres in Present Farm.

Waterman, B. Angell

17.44  
0.50  
17.94 A. Kerr's  
53.45 H. W. Bowen's  
 $36 \frac{01}{100}$  Acres = W. B. Angell's  
59.44 ft. 1,568,596.00

OFFICE No. 1314  
DRAWER " 72  
SHEET " K-2