

A plat of a lot of Land owned by Joseph Watt, situated in North Providence adjoining the old Neck Road leading from Providence City to the Village of Pawtucket. - Surveyed April 8<sup>th</sup> 1843. and platted from a scale of ten rods to the inch by Lemuel Argell, Surveyor.

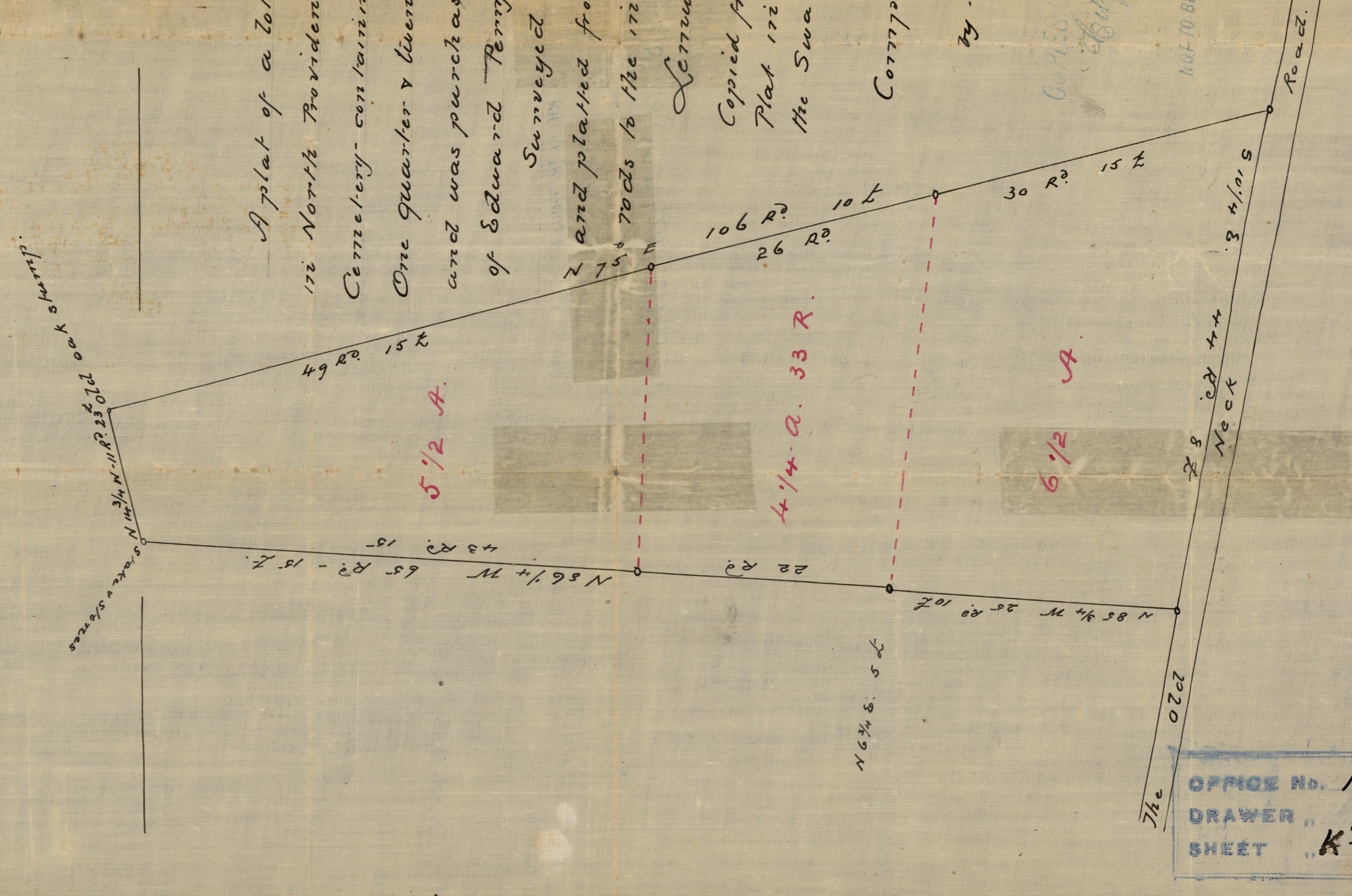
Copied from an Original Plat. in the possession of the Swaz Barril Cemetery Corporation.

Compared & copied.

June 23<sup>rd</sup> 1874  
by - S. G. K.  
H. E. S.

COPIES OF TENTH WARD PLATS  
City Engineer's Office  
Vol. 56

NOT TO BE TAKEN FROM THE OFFICE.



A plat of a lot of Land situated in North Providence near Swan point Cemetery containing sixteen acres One quarter & twenty seven rods of Land and was purchased by Mr. Paris Hill of Edward Perry and others - - Surveyed April 5<sup>th</sup> A. D. 1849 and platted from a Scale of two rods to the inch by -

Lemuel Argell Surveyor.  
Copied from an Original Plat in the possession of the Swaz Barril Cemetery Corporation & Copied

by - June 23<sup>rd</sup> 1874  
S. G. K.  
H. E. S.

COPIES OF TENTH WARD PLATS  
City Engineer's Office  
Vol. 55

CITY ENGINEER'S OFFICE.  
MISCELLANEOUS DEPT.  
1843  
0156

OFFICE No. 151  
DRAWER 72  
SHEET K-1

NOT TO BE TAKEN FROM THE OFFICE.