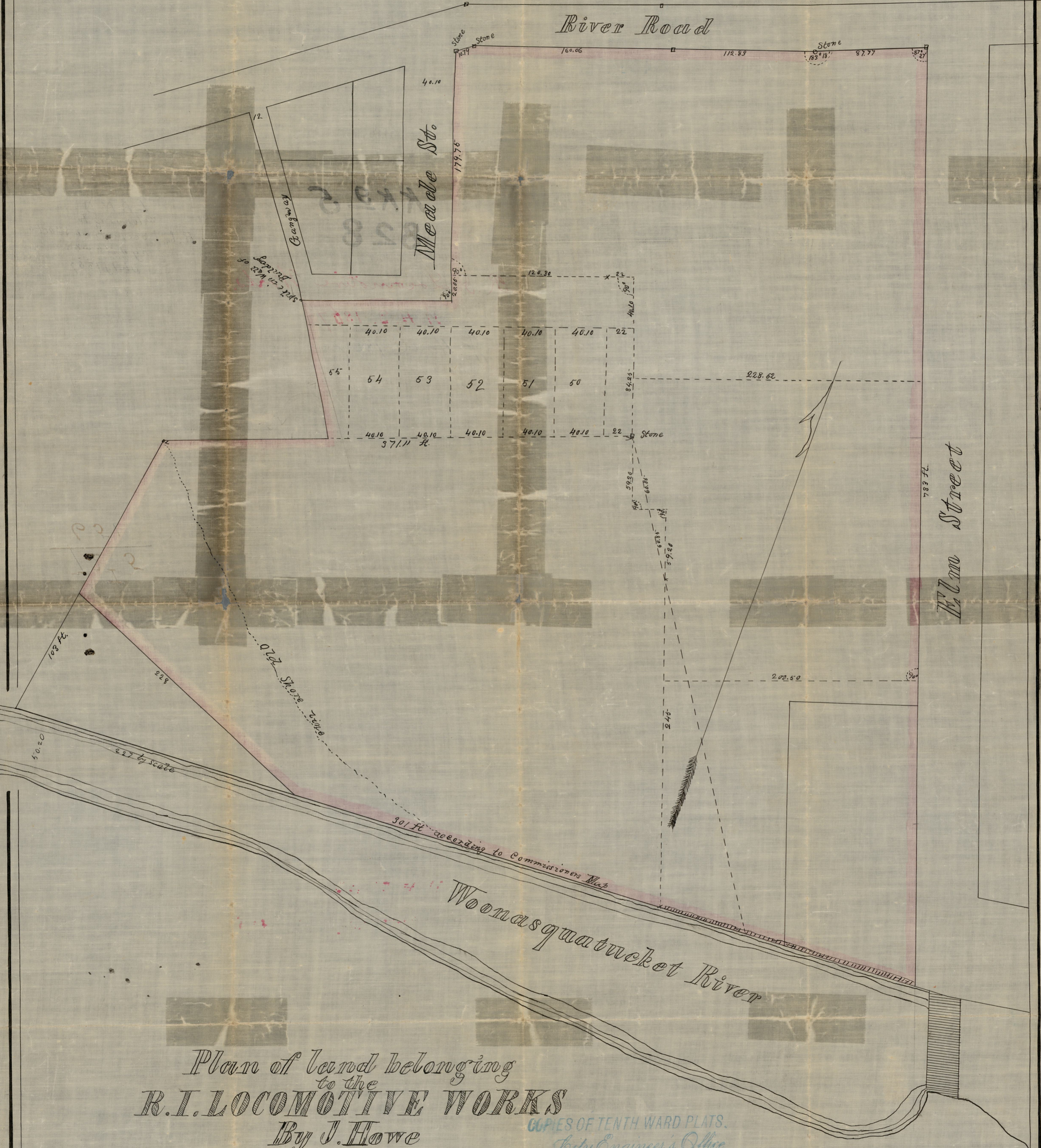


1867

0672



Plan of land belonging
to the
R.I. LOCOMOTIVE WORKS
By J. Howe
July 1867
Scale 50 ft. to an inch

COPIES OF TENTH WARD PLATS.
City Engineer's Office
No. 41

NOT TO BE TAKEN FROM THE OFFICE.

Compaud, June 11, 1874
A. H. Huntington
Asst. Engineer

OFFICE No. 651
DRAWER " 72
SHEET " I-5