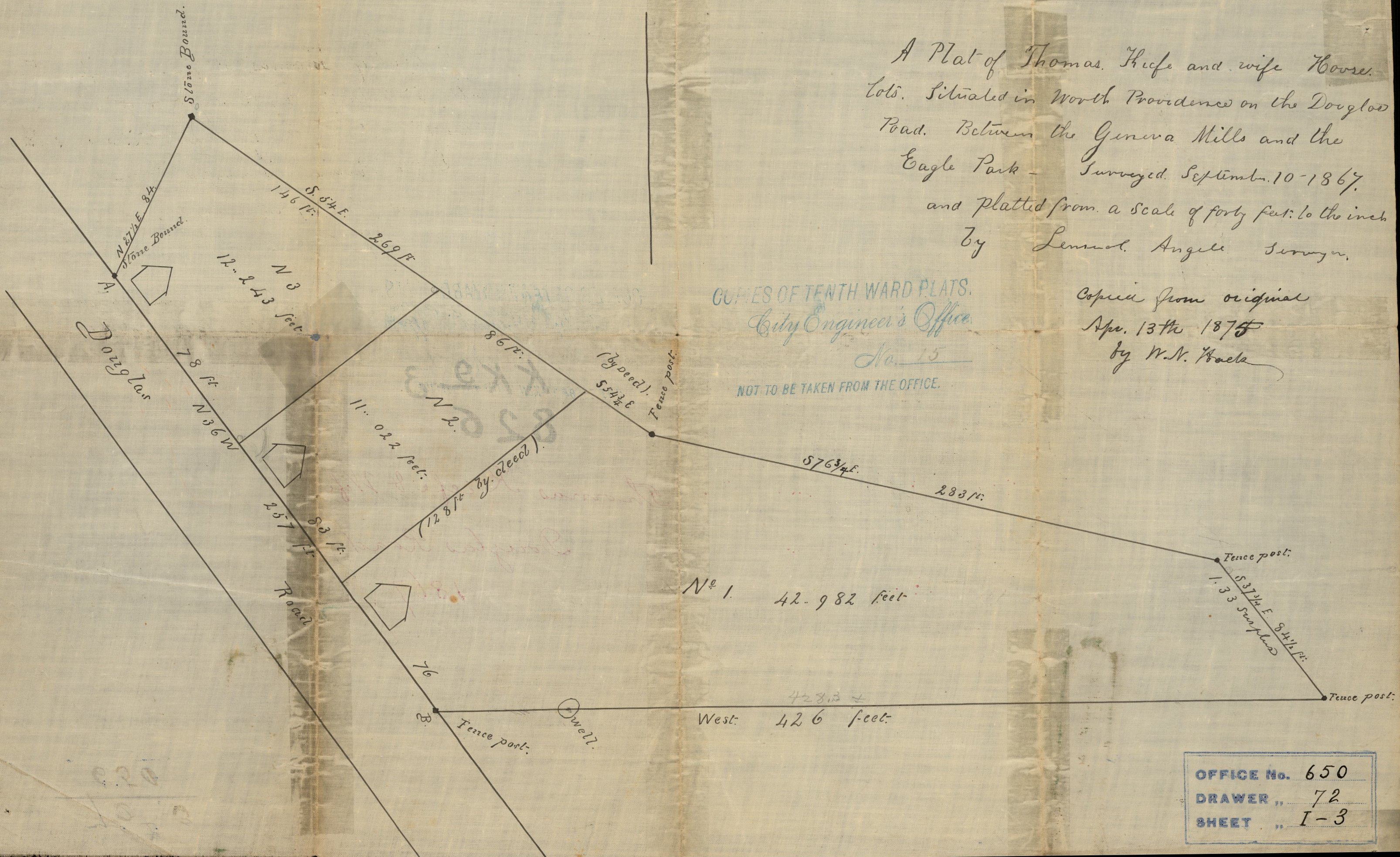


1867

0671



A Plat of Thomas. Hice and wife Moore.
Lots. Situated in North Providence on the Douglas
Road. Between the Geneva Mills and the
Eagle Park - Surveyed. Sept. 10-1867.
and platted from a scale of forty feet to the inch
by Lemuel. Angell Surveyor.

COPIES OF TENTH WARD PLATS.
City Engineer's Office.
No. 15
NOT TO BE TAKEN FROM THE OFFICE.

Copied from original
Apr. 13th 1875
by W. N. Hoels

OFFICE No. 650
DRAWER ,, 72
SHEET ,, I-3