

THE PINE AVENUE PLAT.

BELONGING TO
STEPHEN CORNELL.
1876

BY S. B. CUSHING & CO

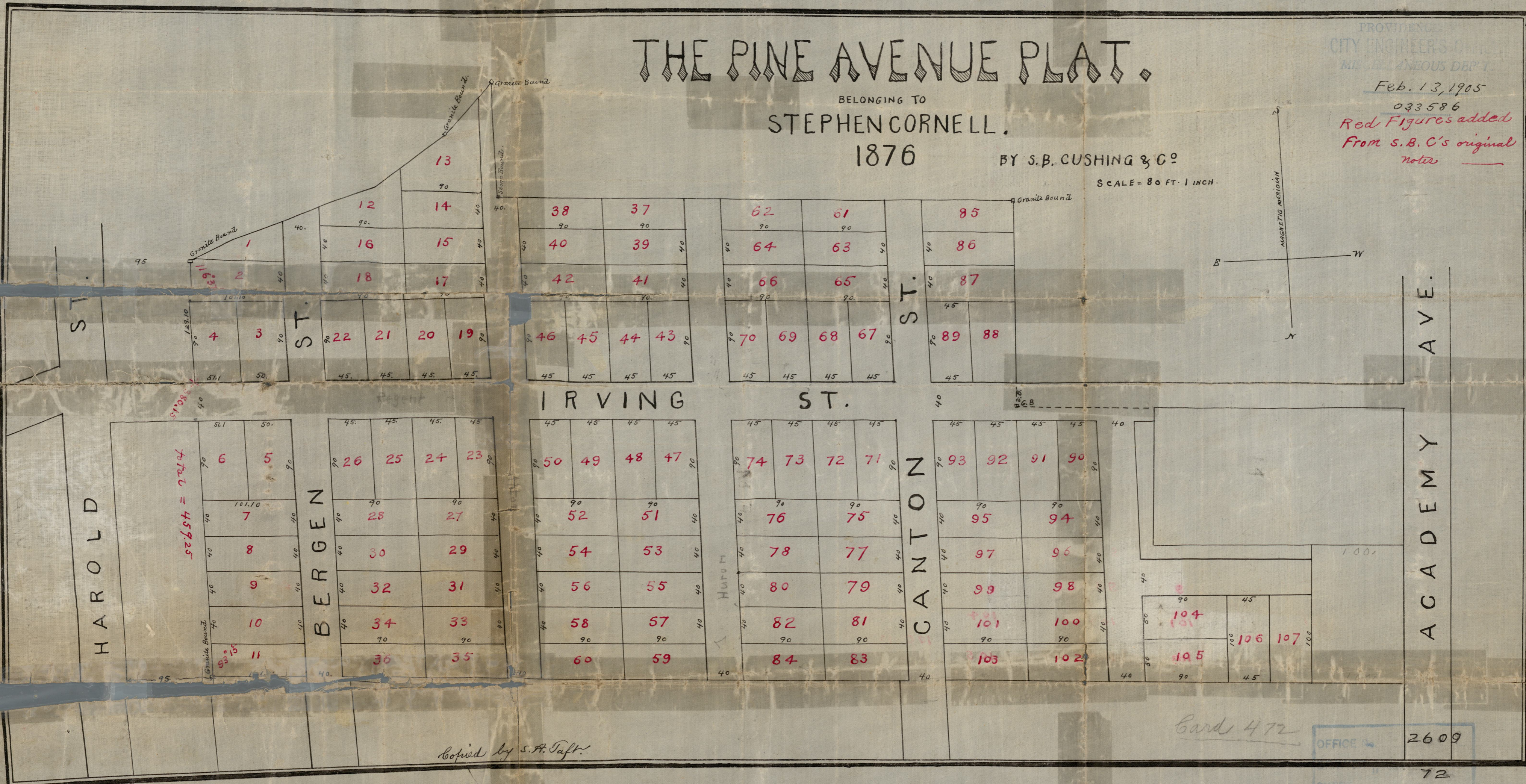
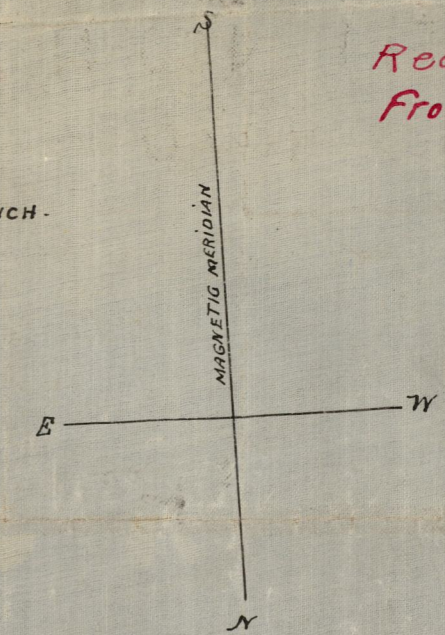
SCALE = 80 FT. = 1 INCH.

PROVIDENCE
CITY ENGINEER'S OFFICE
MISCELLANEOUS DEPT.

Feb. 13, 1905

033586

Red Figures added
From S. B. C.'s original
notes



total = 459.25

Copied by S. A. Taft.

Card 472

OFFICE 2609
SHEET 72
H-11