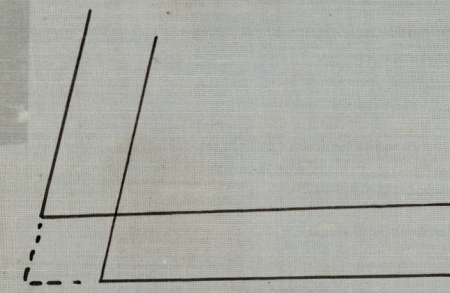


SAMUEL HEDLEY'S PLAT NO 2,
 OF PART OF ELVIRA EDDY'S PORTION OF
 ELIZABETH ANGELL'S ESTATE

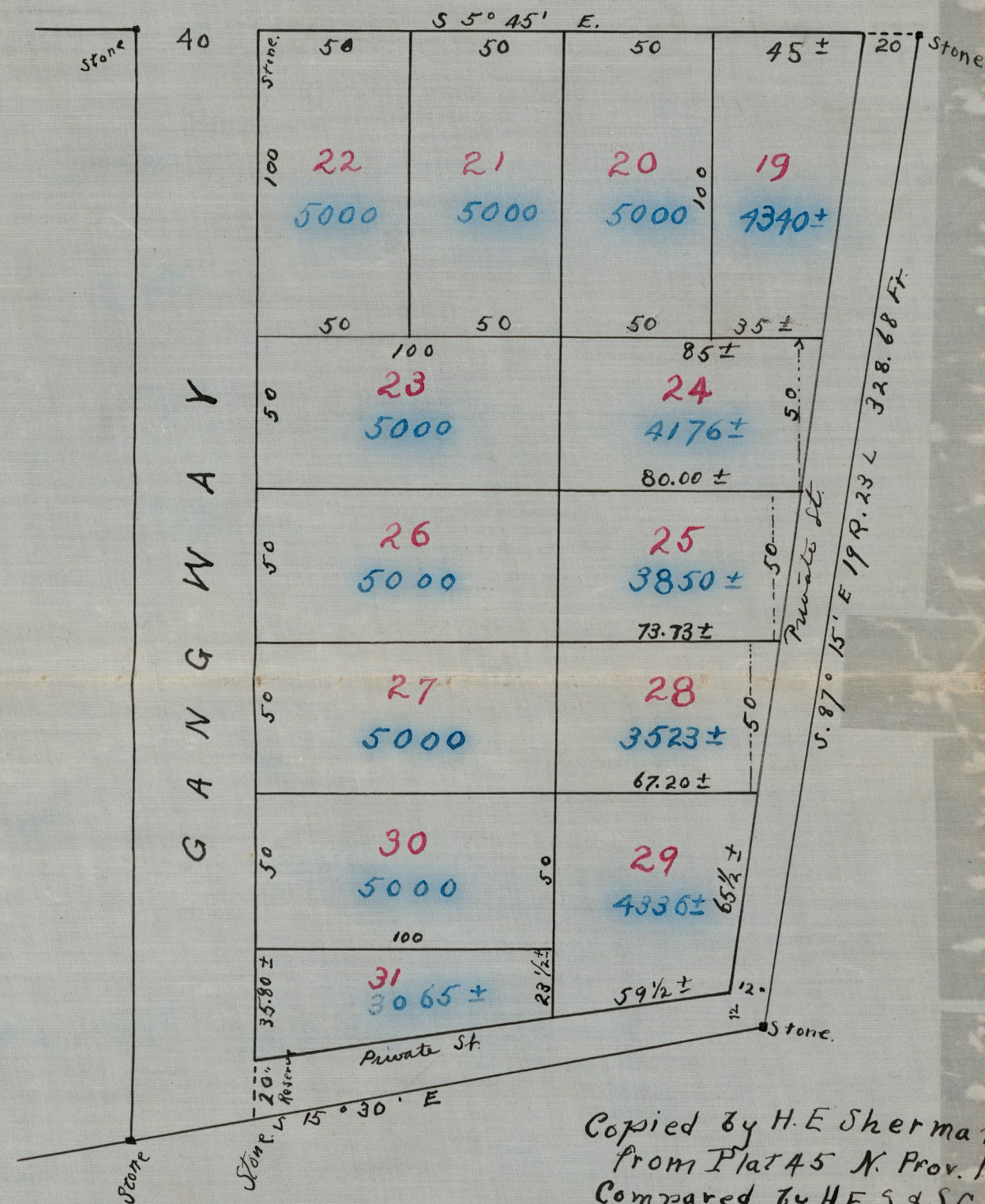
In North Providence, belonging to
 Lydia A. Hedley.

Surveyed and Platted, May 1866
 By C. E. PAINE.

PROVIDENCE, R.I.
 CITY ENGINEER'S OFFICE
 STREET LINE DEPT.
 Jan. 14, 1926
 048334



LOISQUISSET 'PIKE'



CARD 336

TRACING BY A.E. KELLEY

Outlines taken from "Plat of the Elizabeth Angell Estate", by S.B. Cushing 1865

Scale 50 ft. to an inch.

Copied by H.E. Sherman June 27th 1874
 from Plat 45 N. Prov. land records
 Compared by H.E.S. & S.G. Kent.

ROAD BY EAGLE PEAK.

OFFICE No. 629
 DRAWER 72
 SHEET F-9