

Note
 In consequence of an Error in the Outline Plat
 of this Estate a change in the location of Sherman Av
 was rendered necessary thereby erasing lots 25 26 11 & 35
 which are replaced by lots 25" 26" & 11" an Grant
 Av. and Hopkins St The Red lines, figures &
 represent the correct lines as altered
 C. E. Paine

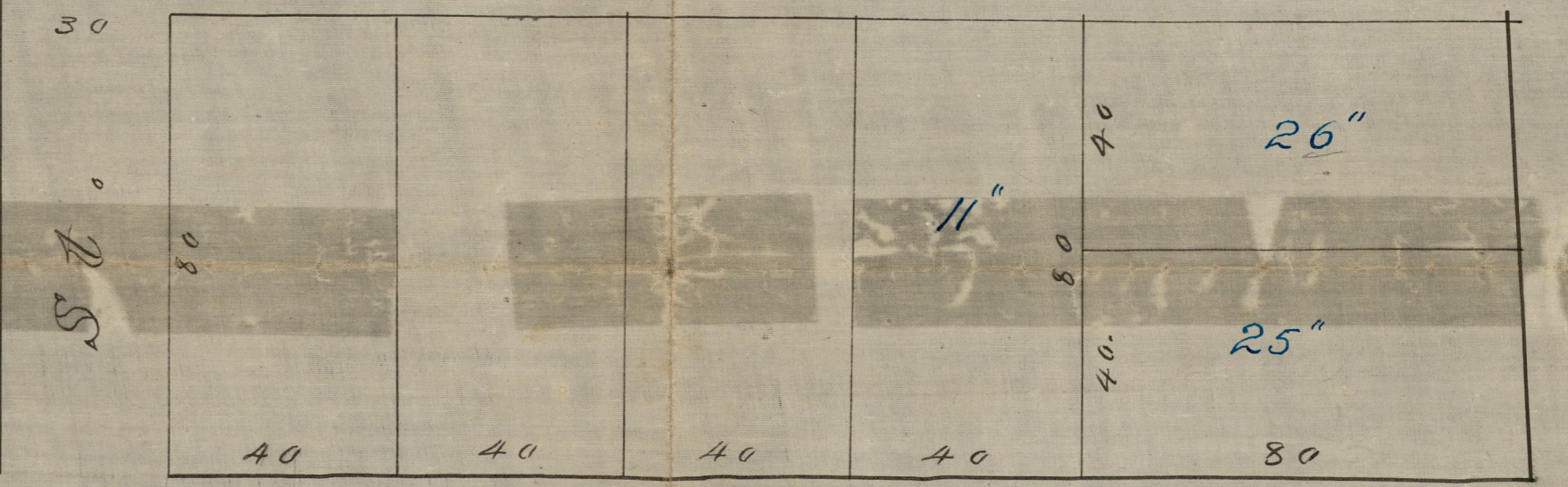
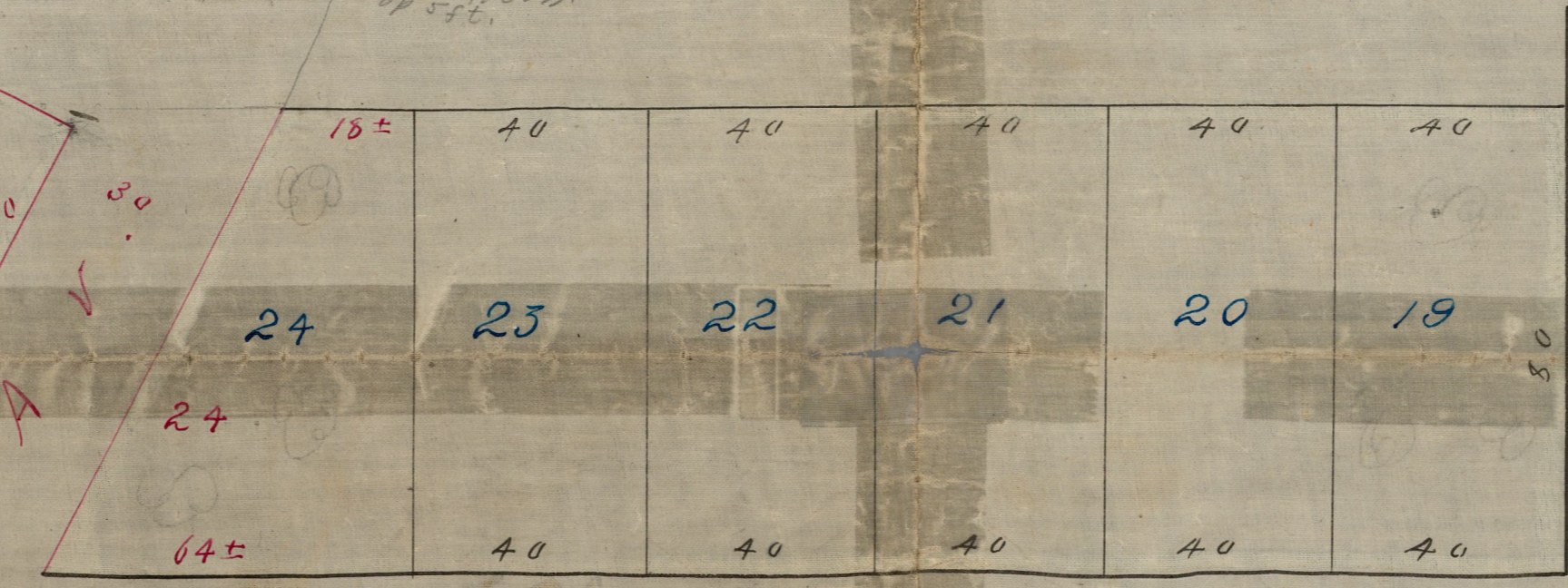
SAMUEL HEDLEY'S PLAT
 of Sheffield Smith Land

Sheffield Smith City Engineer's Office
 No. 89 AT EAGLE PARK
 NOT TO BE TAKEN FROM THE OFFICE.

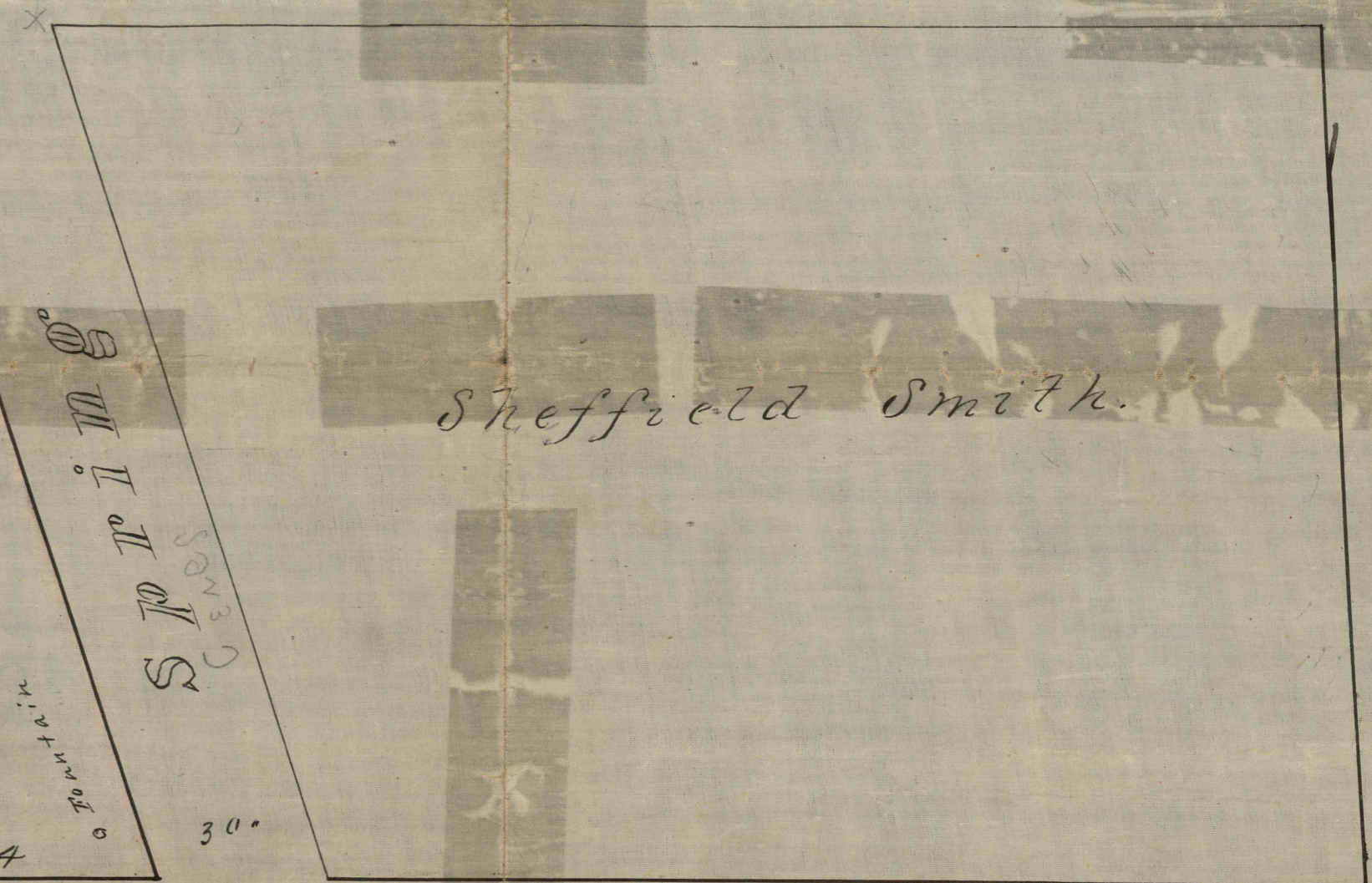
Platted and Drawn By C. E. PAINE.
 Pror June 4, 1864.
 (Cond 355)

Scale 30 Feet per inch
 Outlines copied from a Plat made by
 Lemuel Angell June 1, 1864.

Stone Ledger



Grant AV.



Mrs I. C. F. a t e r

H o p k i n s

Douglas Avenue

Mrs. Newcomb

RW Taylor

Atlas Bank.

Copied by H. E. Sherman from Plat 74 N.P. record
 June 27th 1874
 Compared by Saml G Kent & H. E. S.

OFFICE No. 585
 DRAWER " 72
 SHEET " F-5