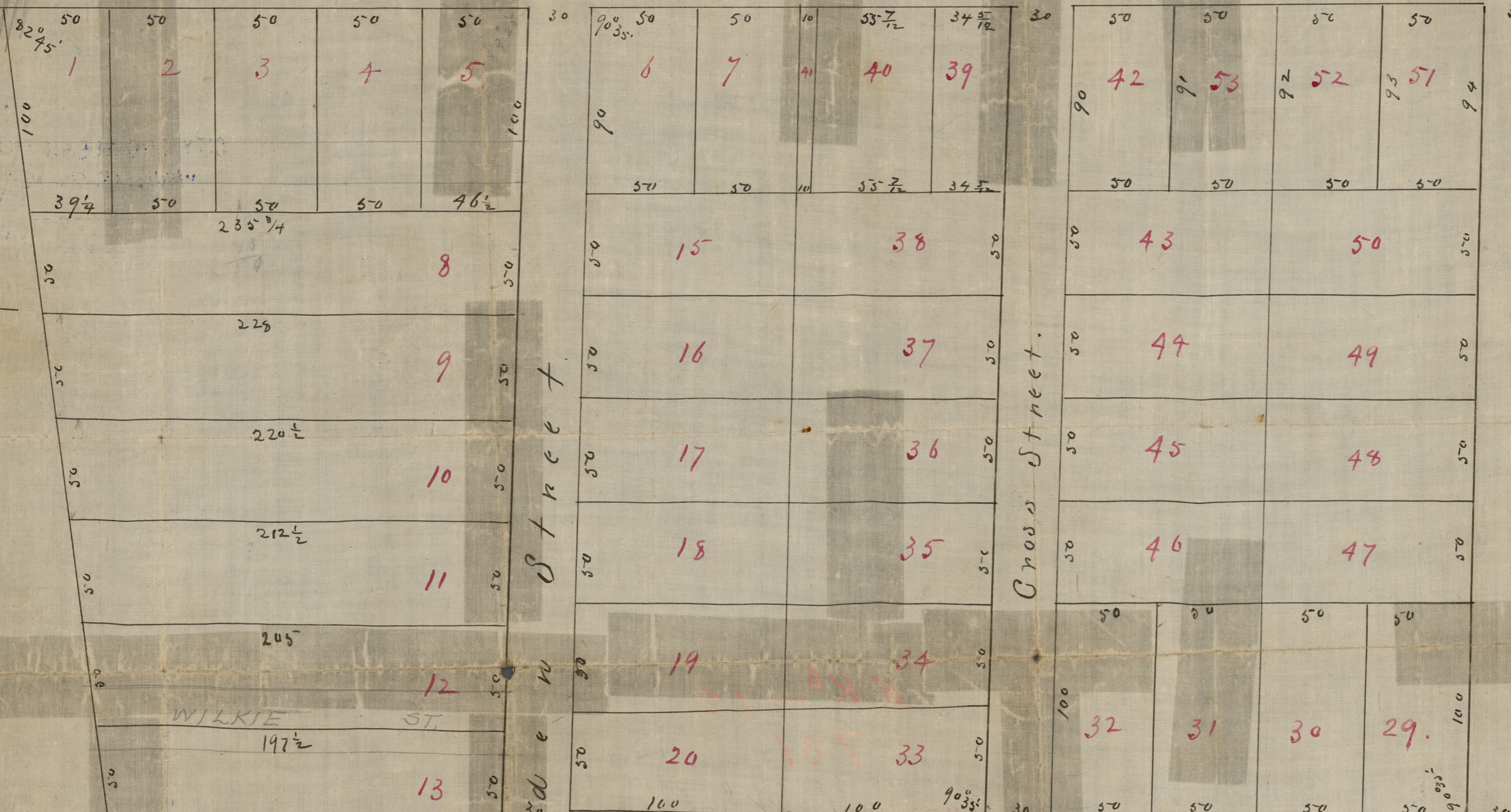


West River Road



CITY ENGINEER'S OFFICE
 MISCELLANEOUS DEPT.
 1846
 0222

WILKIE ST.

Greene Street. (MCKENNA)

OFFICE No. 215
 DRAWER .. 72
 SHEET .. F-15

Plot of Lots
 Belonging to
 Samuel Wheeler
 Surveyed & Platted
 by
 J.C. Wallings
 March 1846.

COPIES OF TENTH WARD PLATS.
 City Engineer's Office.
 No. 128
 NOT TO BE TAKEN FROM THE OFFICE.

(Card 363)
 Recorded March 28 1846 by J.A. Muder
 J. Clerk

Scale 50 feet to the inch.

Elm Tree

Mill Pond

Copied by H.E.S. July 25th
 from plat 90 N. Plats
 Computed by H.E.S. & A.W.T.