

Aug. 8, 1900
035910

Copy of 0372
Compared G. H. K.

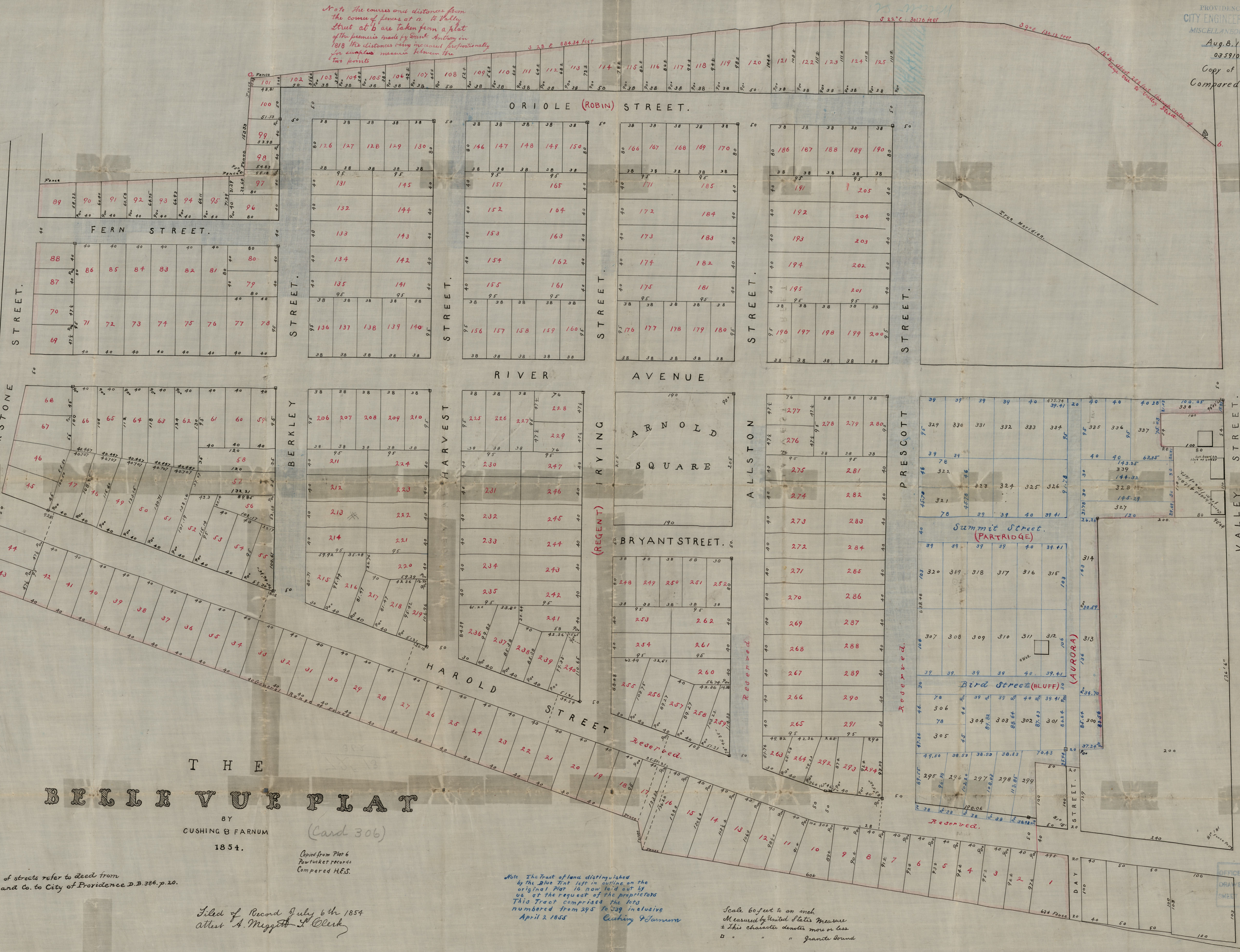
Note: The courses and distances from the corner of fences at a. to Valley Street at b are taken from a plat of the premises made by David Anthony in 1818 the distances being increased proportionally for encroachments between the two points

5 22° E 3017.6 feet

39° E 124.12 feet

3 16° 45' E 258.84 feet (along center of Valley Street to Valley Street)

True Meridian



THE
BELLEVUE PLAT

BY
CUSHING & FARNUM
1854.

(Card 306)

Copied from Plat 6
Dawcket records
Compared H.E.S.

Note: The tract of land distinguished by the Blue Tint left in outline on the original Plat is now laid out by us at the request of the proprietors. This tract comprises lots numbered from 295 to 339 inclusive
Cushing & Farnum
April 2, 1855

Scale 60 feet to an inch
Measured by United States Measure
± This character denotes more or less
□ " " Granite Bound

Filed of Record July 6th 1854
attest A. Meggitt Clerk

OFFICE NO. 362
DRAWER 72
SHEET F-13

Shaded portions of streets refer to deed from West Providence Land Co. to City of Providence D.B. 386, p. 20.