

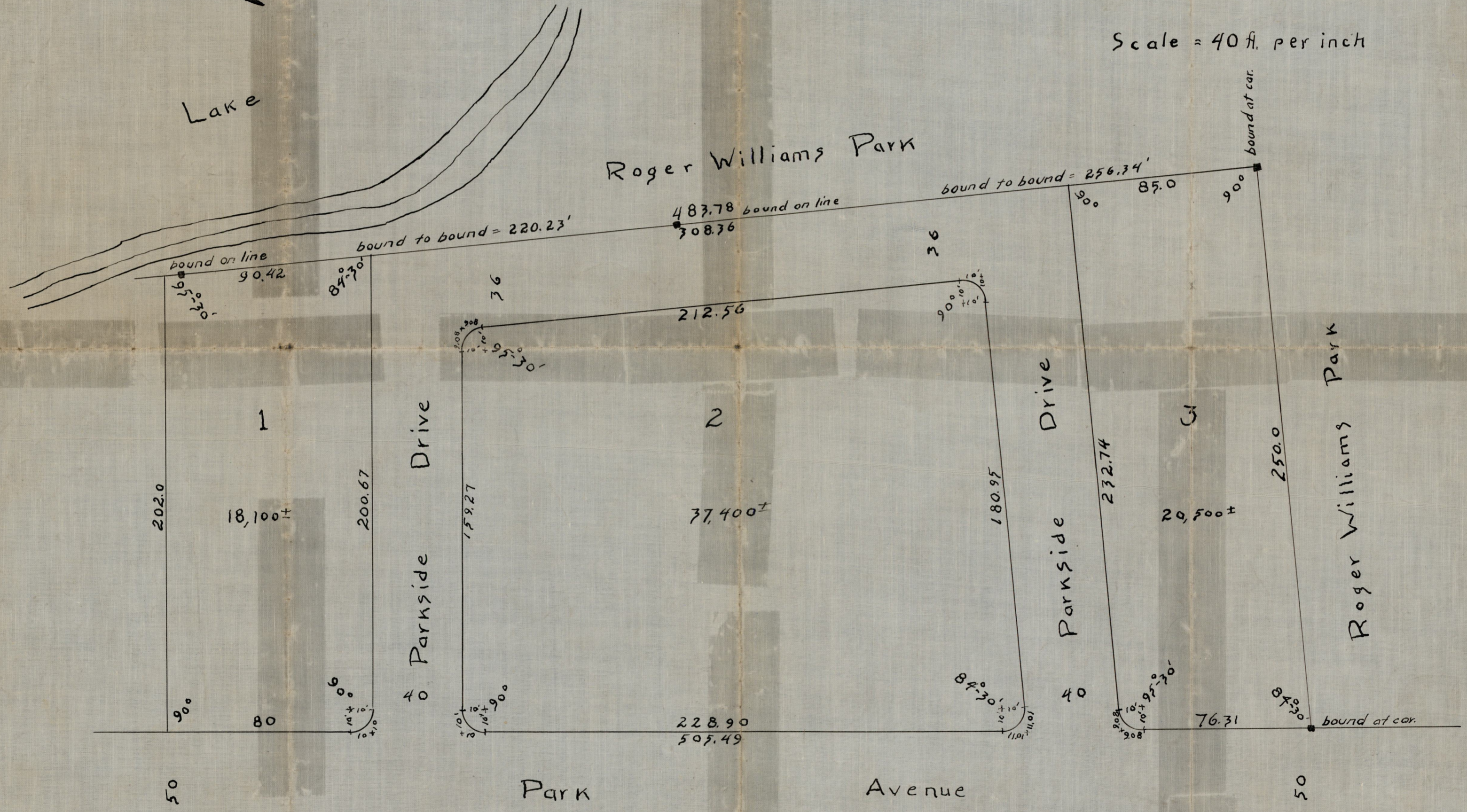
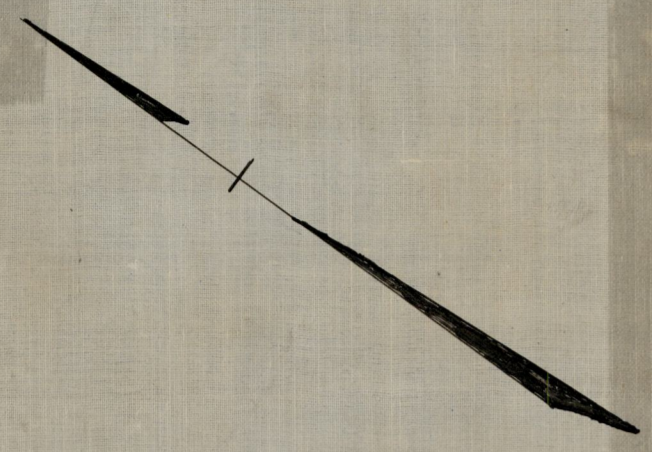
RECEIVED FOR RECORD
Providence, R.I. MAR 4 1931
at 1-41 P.M.

PROVIDENCE, R.I.
CITY ENGINEER'S OFFICE
STREET LINE DEPT.
April 6, 1931
053567

PARKSIDE

Providence, R.I., belonging to
Leslie B. Ballou Jr.
February 1931

Scale = 40 ft. per inch



in BOARD OF ALDERMEN
MAR -2 1931

Note:
Outline taken from map by J.A. Latham & Son, Apr. 1925

Compared by Boomer & Dexter

OFFICE No. 25425
DRAWN BY 72
SHEET E 22

P.B. 39-59-Cord 1129