

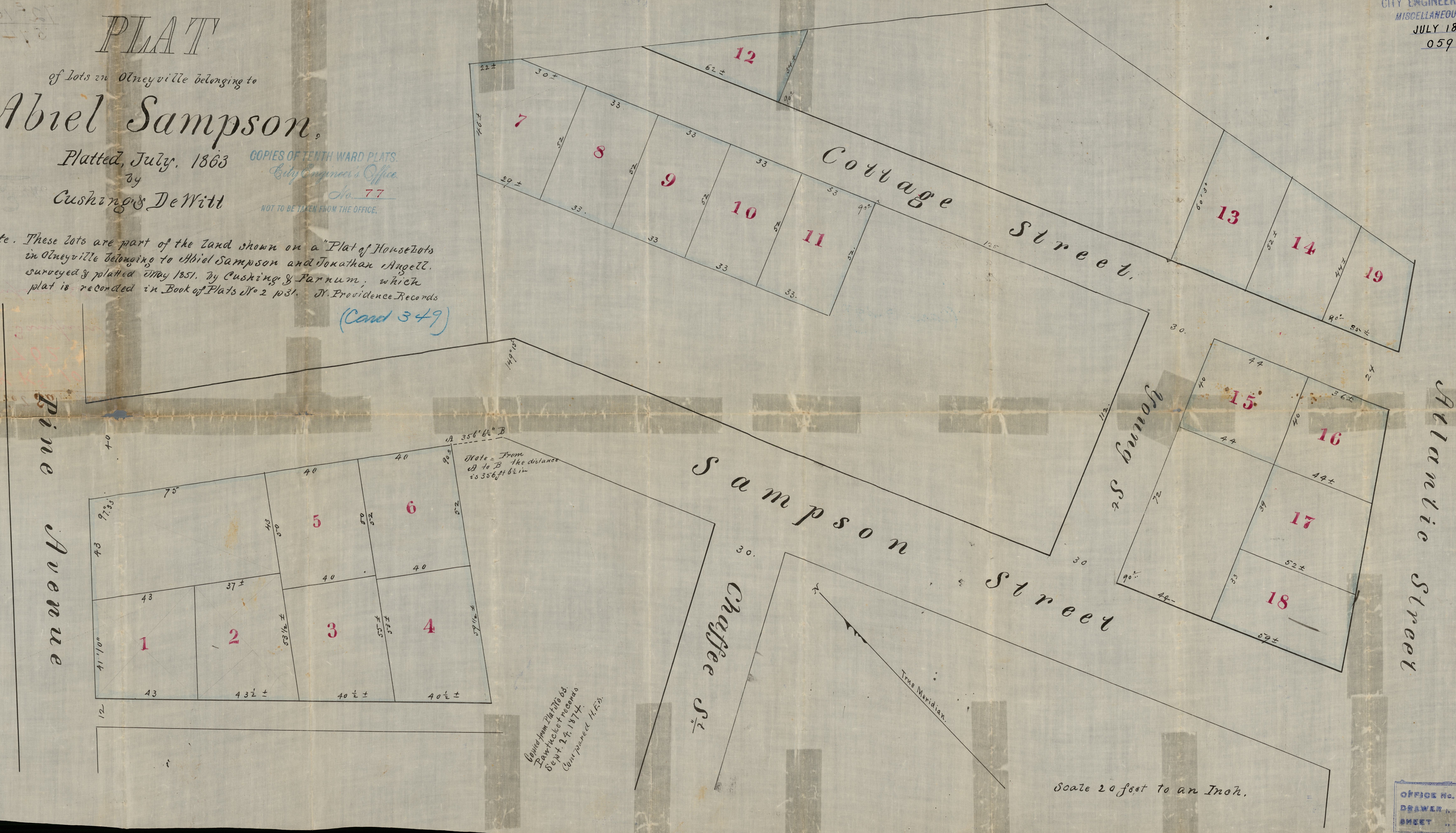
# PLAT

of lots in Olneyville belonging to  
**Abiel Sampson,**  
Platted, July, 1863  
by  
Cushing & DeWitt

COPIES OF TENTH WARD PLATS.  
City Engineer's Office.  
No. 77  
NOT TO BE TAKEN FROM THE OFFICE.

Note. These lots are part of the land shown on a 'Plat of House Lots in Olneyville belonging to Abiel Sampson and Jonathan Angell, surveyed & platted May 1851, by Cushing & Farnum, which plat is recorded in Book of Plats No 2 p 31. N. Providence Records

(Cont 349)



Note - from A to B the distance is 356 ft 6 1/2 in

Copied from Plat 770 66.  
Drawn by C. & D. DeWitt  
Sept 24, 1874.  
Compared H.F.D.

Scale 20 feet to an Inch.