

Copied from Plat 97  
 Pawtucket records  
 Sept. 29 1874.  
 Compared N.E.S.  
 COPIES OF TENTH WARD PLATS  
 City Engineer's Office  
 No. 51

Plat  
 of  
 Land belonging to  
 Andrew Winsor  
 22

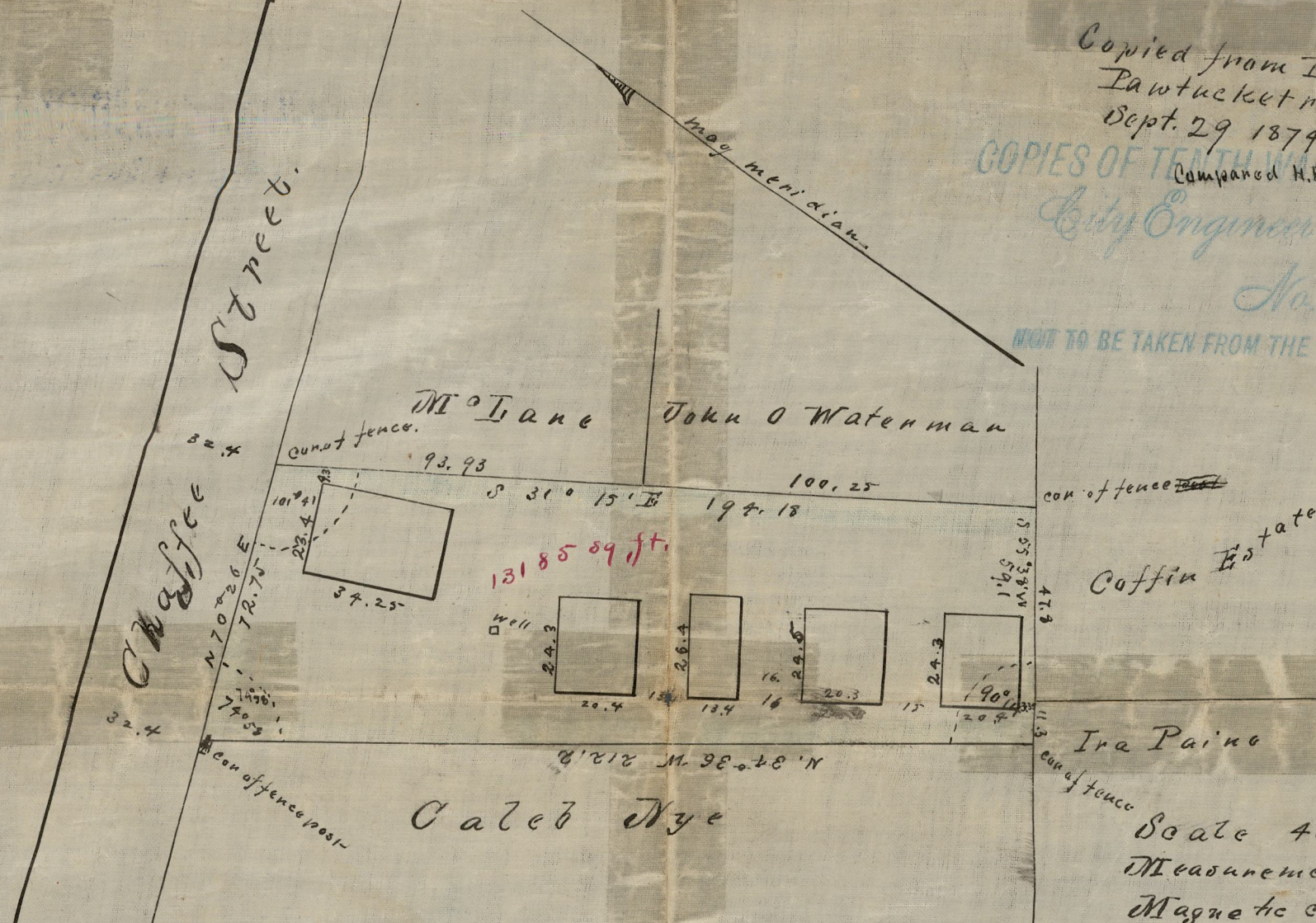
CITY ENGINEER'S OFFICE  
 MISCELLANEOUS DEPT.  
 APRIL 1865  
 0638

NOT TO BE TAKEN FROM THE OFFICE.

Olneyville,  
 North Providence  
 by  
 Cushing & DeWitt  
 Apr. 15<sup>th</sup> 1865

(Card 365)

Scale 40 ft to an inch  
 Measurements in feet & decimals U.S. Standard  
 Magnetic courses calculated from the angles.



Record for Record April 26<sup>th</sup> 1865  
 attest. Royal Lee  
 Town Clerk



Atwells Avenue

Plat of Land belonging to Jason Young & Wife  
 on the northerly side of Atwells Avenue in  
 North Providence  
 Surveyed & Platted in 1865  
 Compared N.E.S.  
 Plat 79

COPIES OF TENTH WARD PLATS  
 City Engineer's Office  
 No. 51  
 NOT TO BE TAKEN FROM THE OFFICE.

OFFICE No. 618  
 DRAWER 72  
 SHEET D-9