

D O W N S S T

T W I N P I K E

PLAT
of House Lots in North Providence belonging
to

NELSON C. NORTHUP

COPIES OF TENTH WARD PLATS,
City Engineer's Office.

Surveyed and platted Dec. 10th 1851

by Schubart & Hamme

No. 30

NOT TO BE TAKEN FROM THE OFFICE.

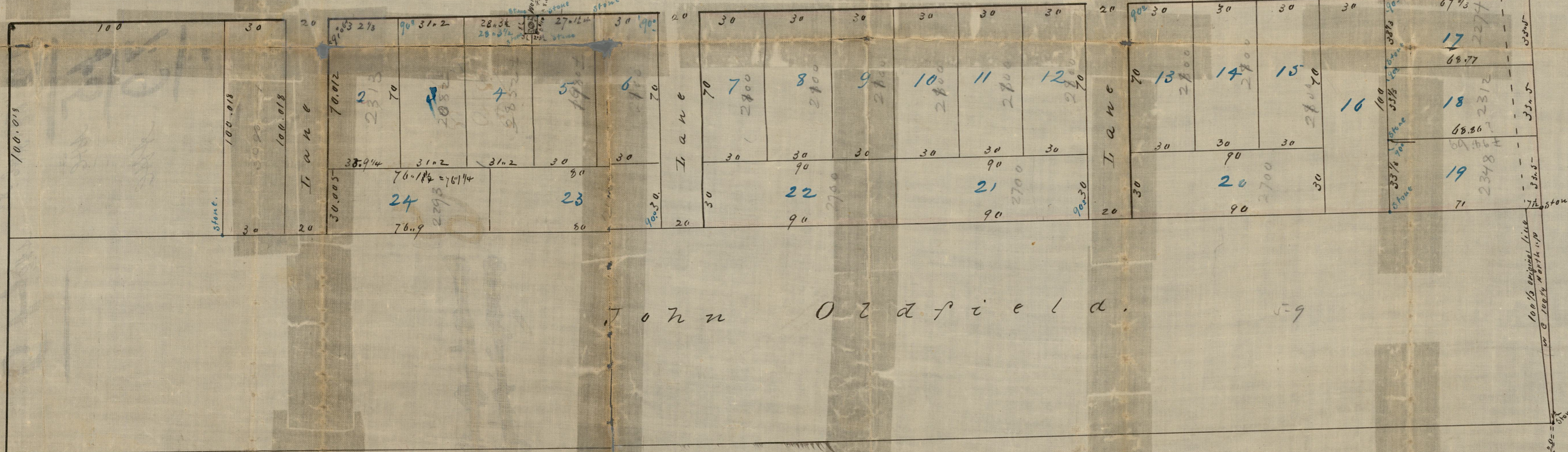
(Card 339)

Scale 40 FT to an inch
Measure U.S.

Copied by H.E.S. July 27, 1874
from plat 49 N.P. Records
Notes in file (not lot numbers)
from plat of Schubart & Hamme
Dec. 1851. See Plat 59 N.P. Records
Old Prov. Measure
Compared by H.E.S. & A.W.T.

CITY ENGINEER'S OFFICE.
MISCELLANEOUS DEPT.
DEC. 1851.
0312

Taylor Fillmore St.



John Ozafield.

Whipple St.

Down St.

Harvis.

Geo

Filed of Record May 28 1852

Wm. H. Weedon J. Clerk

OFFICE No. 302
DRAWER " 72
SHEET " D-2