

CITY ENGINEER'S OFFICE.  
MISCELLANEOUS DEPT.  
JULY 1872  
01439

*(and 304)*  
Copied from plat No. 4, J.P. Janor records  
dated 25th 1874 by H. E. HERMAN.  
(Note, the remainder of this plat  
(parcels) may be found on another  
sheet, H.E.S.)  
Scale 50ft per inch  
August 1866  
Not a plat by C.E. Payne.  
It is a plat by Lyell H. Healy  
of the State of Maine  
Gunn Healy's Plat  
NOT TO BE TAKEN FROM THE OFFICE  
COPIES OF TENTH WARD PLATS

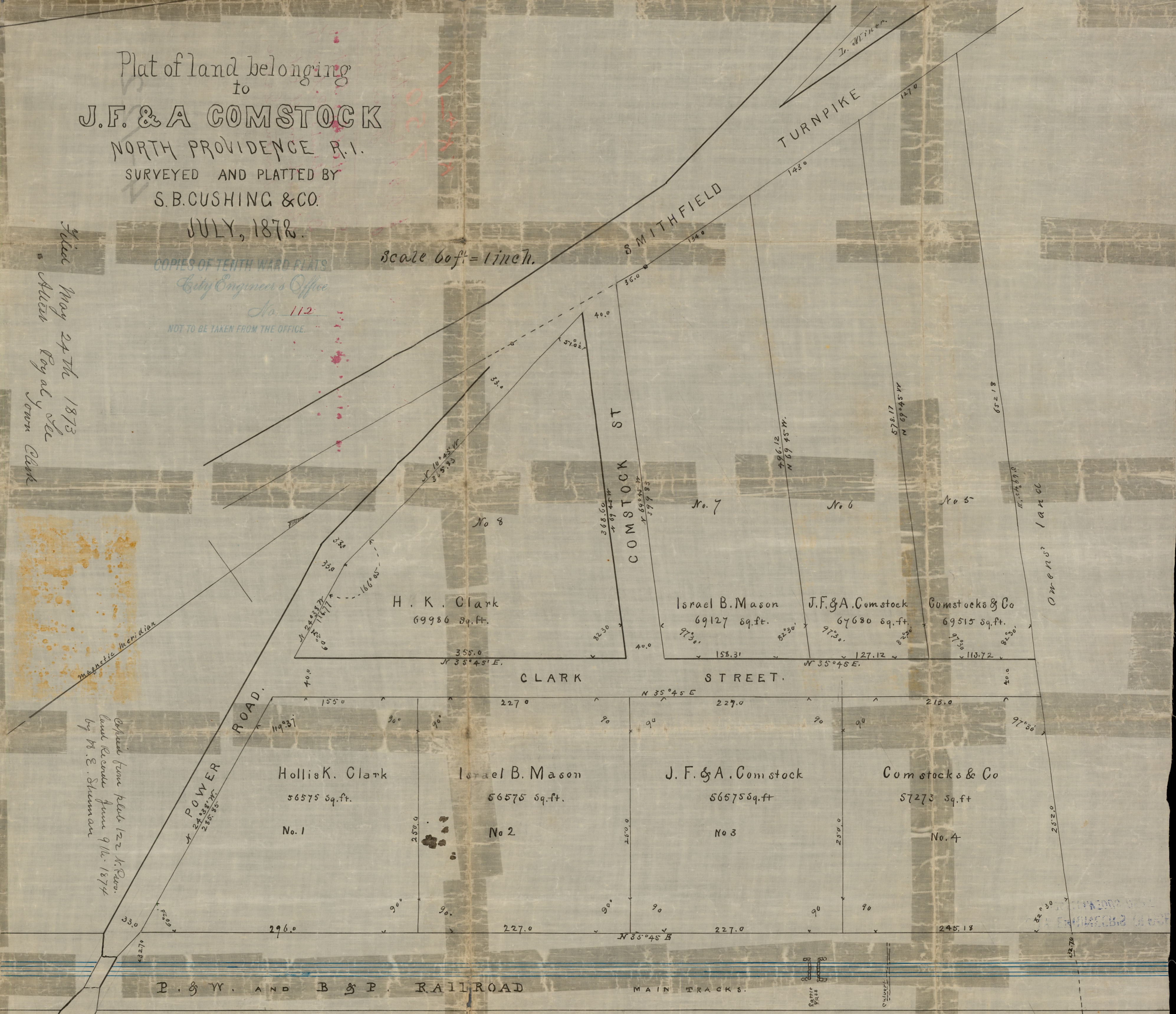


Plat of land belonging  
to  
**J.F. & A COMSTOCK**  
NORTH PROVIDENCE R.I.  
SURVEYED AND PLATTED BY  
S.B. CUSHING & CO.  
JULY, 1872.

Scale 60ft = 1 inch.

COPIES OF TENTH WARD PLATS  
City Engineer's Office  
No. 112  
NOT TO BE TAKEN FROM THE OFFICE.

*Filed May 24th 1873  
Attest Royal W. Clark  
City Clerk*



OFFICE No. 1201  
DRAWER " 72  
SHEET " D-11

Darius Turner