

Plat of land in North Providence belonging to Nathaniael Bowen

Surveyed & Platted 17th March 1860 BY H.A. DEWITT.

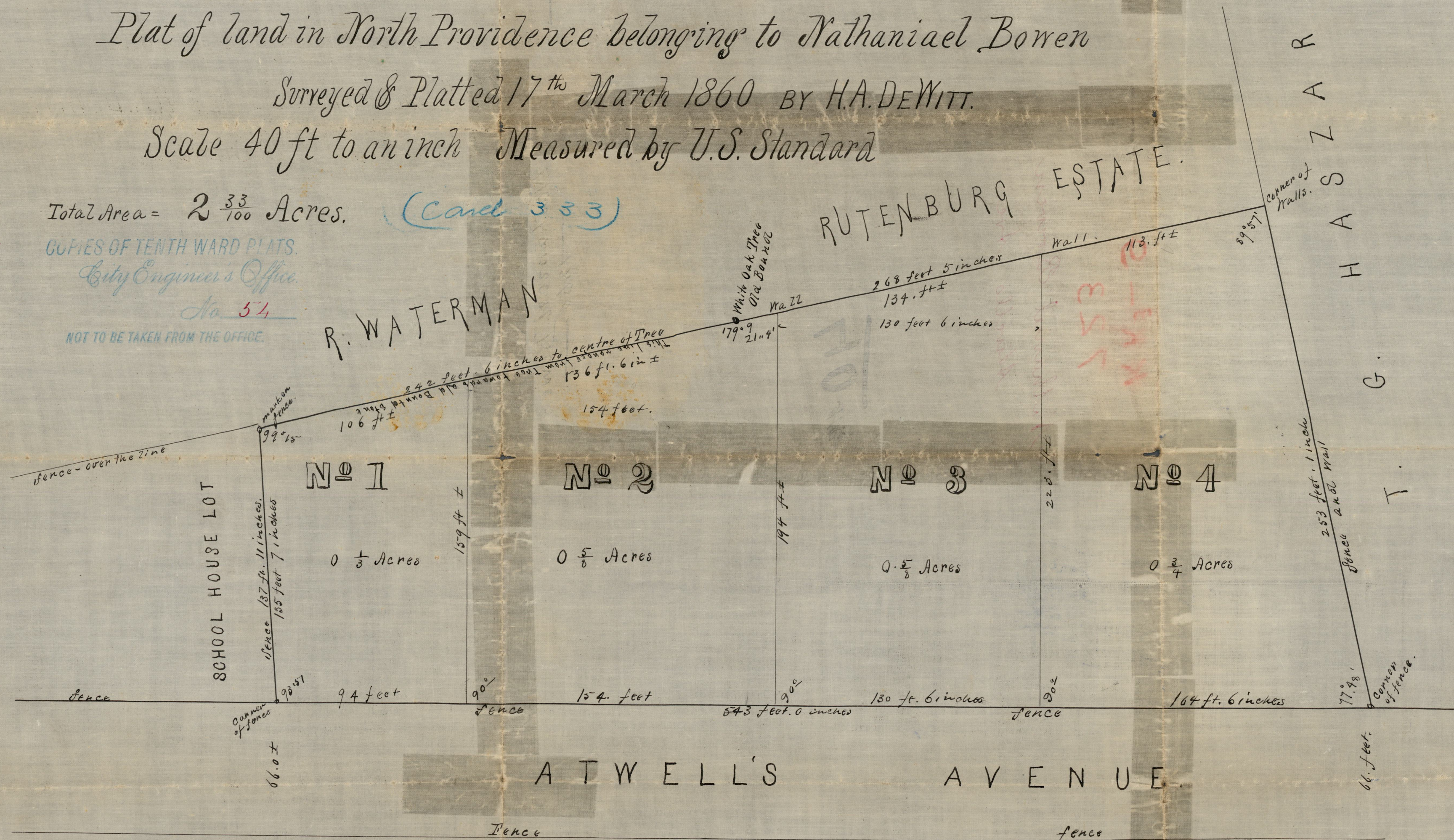
Scale 40 ft to an inch Measured by U.S. Standard

Total Area = $2 \frac{33}{100}$ Acres. (Card 333)

COPIES OF TENTH WARD PLATS.
City Engineer's Office.

No. 51

NOT TO BE TAKEN FROM THE OFFICE.



Lines Surveyed as pointed out by Nathaniel Bowen

Copied from Plat to
Tantucket records.
Compared A.E.P.