

1860

0523

CRAWFORD STREET

ORMS STREET

SMITH STREET

PLAT

OF LAND BELONGING TO

DR. W<sup>m</sup>. GROSSVENDOR

BY S.B. CUSHING

1860 & 1872.

Scale 40 ft per in

± more or less

□ granite bound

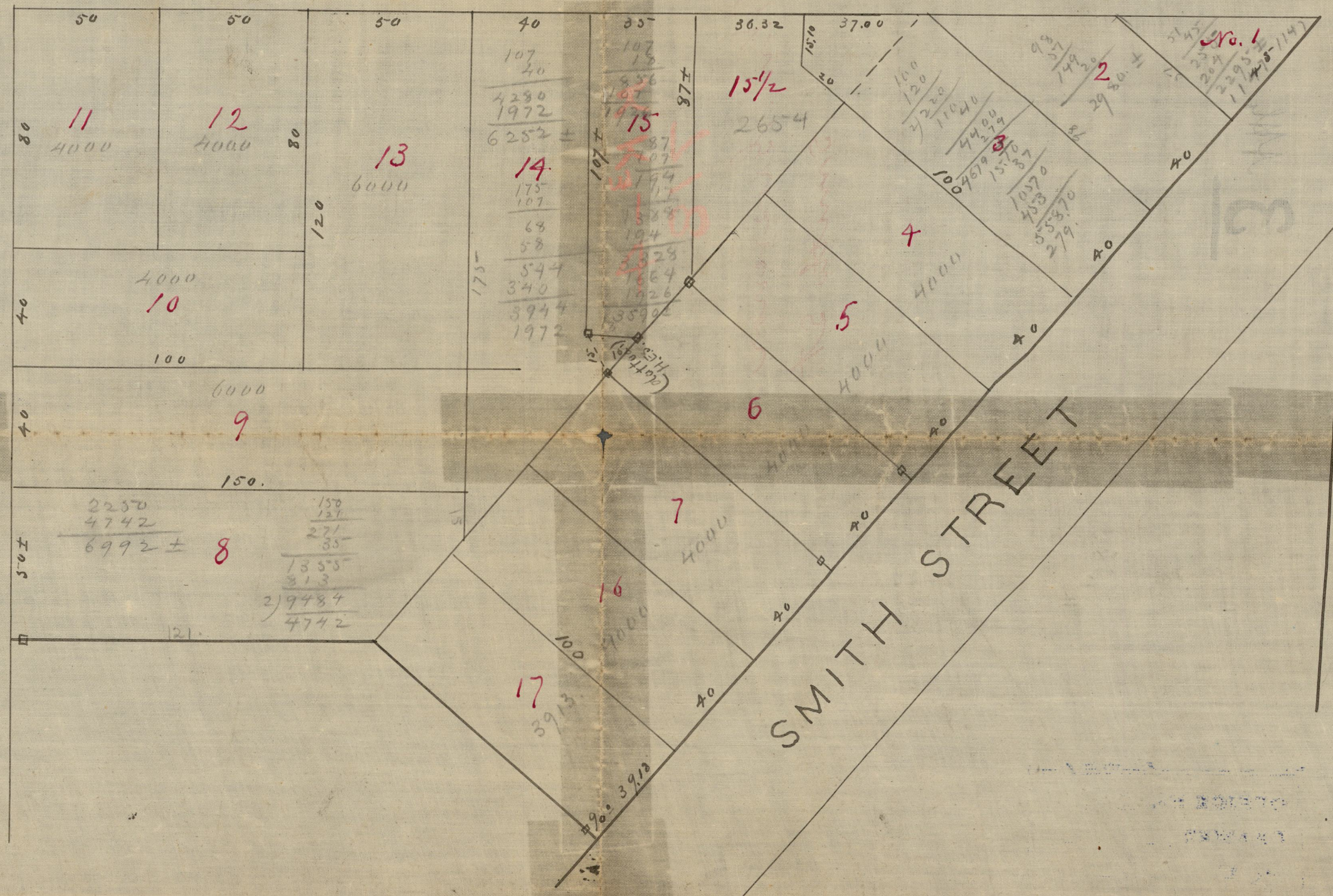
No. 103

NOT TO BE TAKEN FROM THE OFFICE.

OFFICE NO. 805  
DRAWER " 72  
SHEET " 4-C

Copied by H.E.S. July 25, 1874  
from Plat No 3 N.P. records.  
Com. passed by H.E.S. A.V. March 7

(Case 331)



Filed Sept 23 1872  
Roughed by J. E. White