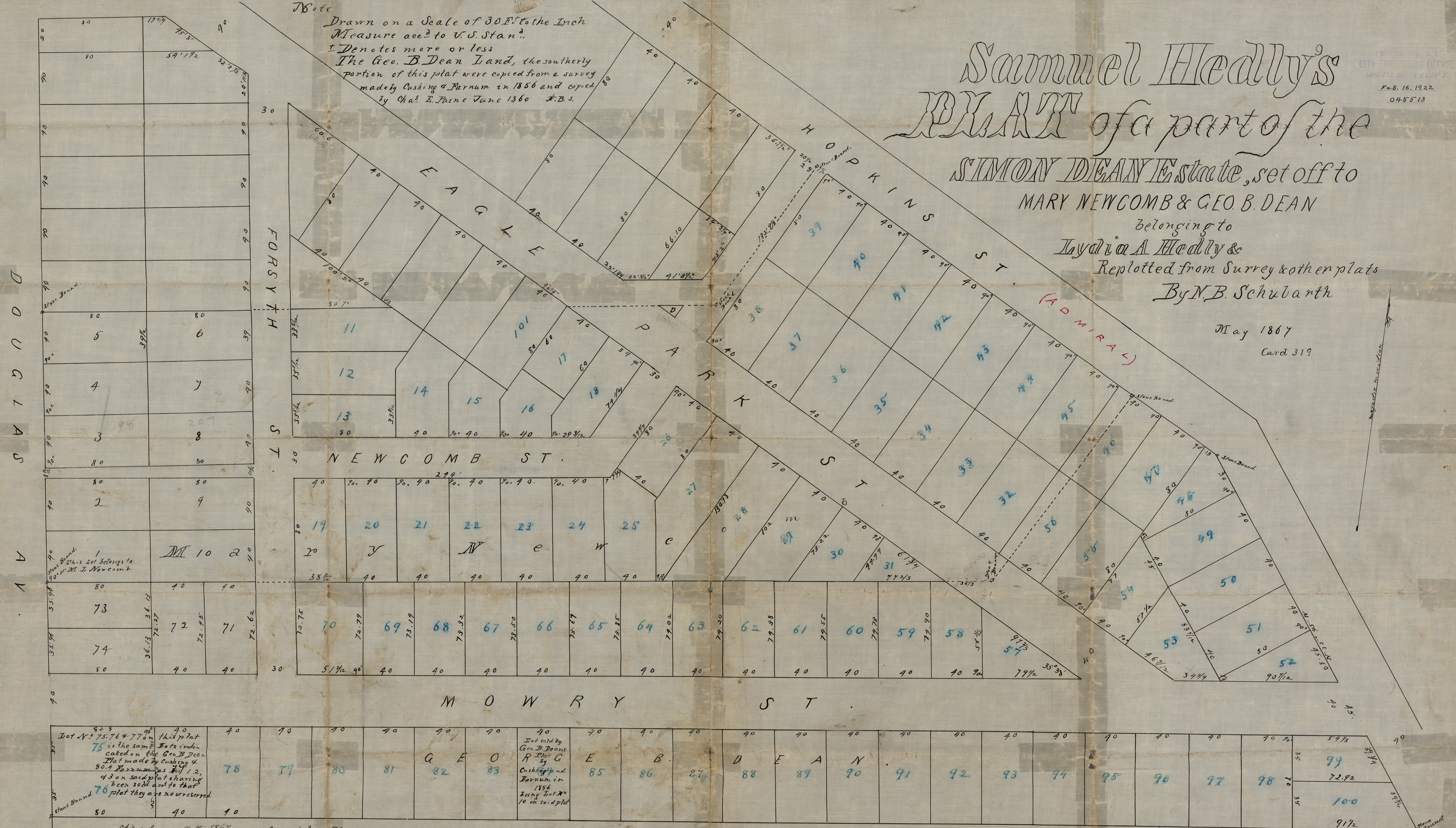


Sammel Heddy's
PLAN of a part of the
SIMON DEAN Estate, set off to
MARY NEWCOMB & GEO. B. DEAN
belonging to
Lydia A Heddy &
Replotted from Surrey & other plats
By N. B. Schubarth

May 1867
Card 319

Note
Drawn on a Scale of 30 Ft. to the Inch
Measure acc^d to U.S. Stan^d.
† Denotes more or less
The Geo. B. Dean Land, the southerly
portion of this plat were copied from a survey
made by Cushing & Farnum in 1856 and copied
by Chas. E. Paine June 1860 A.B.S.



Lot No. 75, 76 & 77 on this plat
is the same as the lots in-
dicated on the Geo. B. Dean
Plat made by Cushing &
Farnum in 1856, as they are
on said plat having
been sold out to that
plat they are no reserved

Lot sold by
Geo. B. Dean
to
R. E. C
by
Cushing &
Farnum in
1856
Being Lot No.
10 on said plat

Filed June 25th 1867
Attest Royal Lee
Clerk

Copied from Plat 22 N. Prov. land records
June 25 1877, by H. E. Sherman,
Compared by H. E. Sherman.