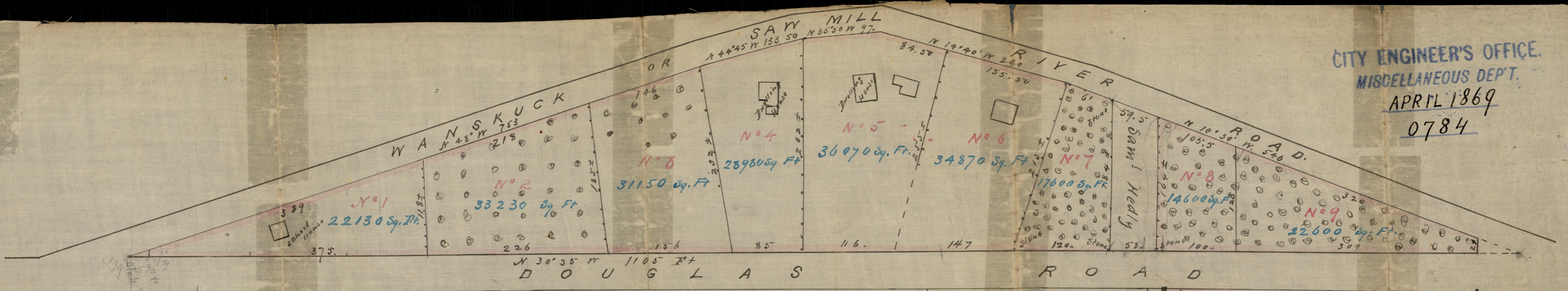


CITY ENGINEER'S OFFICE.
MISCELLANEOUS DEPT.
APRIL 1869
0784



PLAT
of Land in
NORTH PROVIDENCE, R.I.

belonging to the Estate of the late

JOSEPH VEAZIE DEC^d

Made by order of Commis^r appointed by the,

Hon. Supreme Court, Oct. Term 1868,

(Card 360)

By C. E. PAINE.

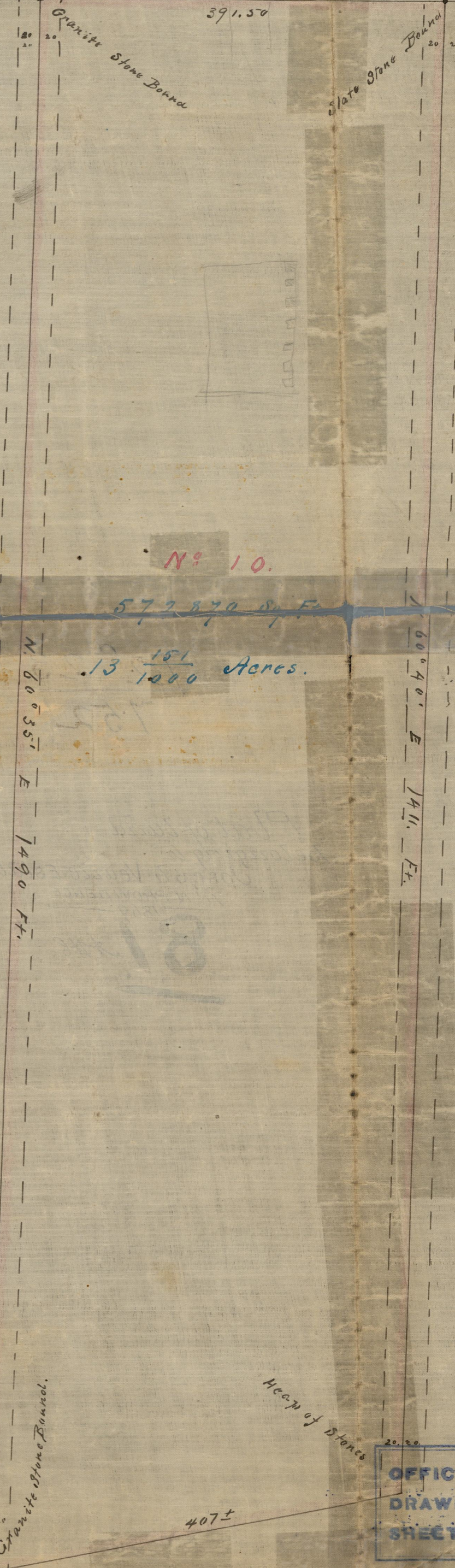
April 27,
1869

COPIES OF TENTH-WARD PLATS.
City Engineer's Office.
No. 14.

NOT TO BE TAKEN FROM THE OFFICE.

Scale 100 Ft. per inch

Copied by H. E. Sherman from Plat 81
N. Prov. land records June 27th 1874.
Compared by H. E. Sherman & Saml. G. Kent.



Filed in office on the
Second day of July 1869
Attest Royal Lee
Town Clerk

OFFICE No. 752
DRAWER .. 72
SHEET .. C-23