

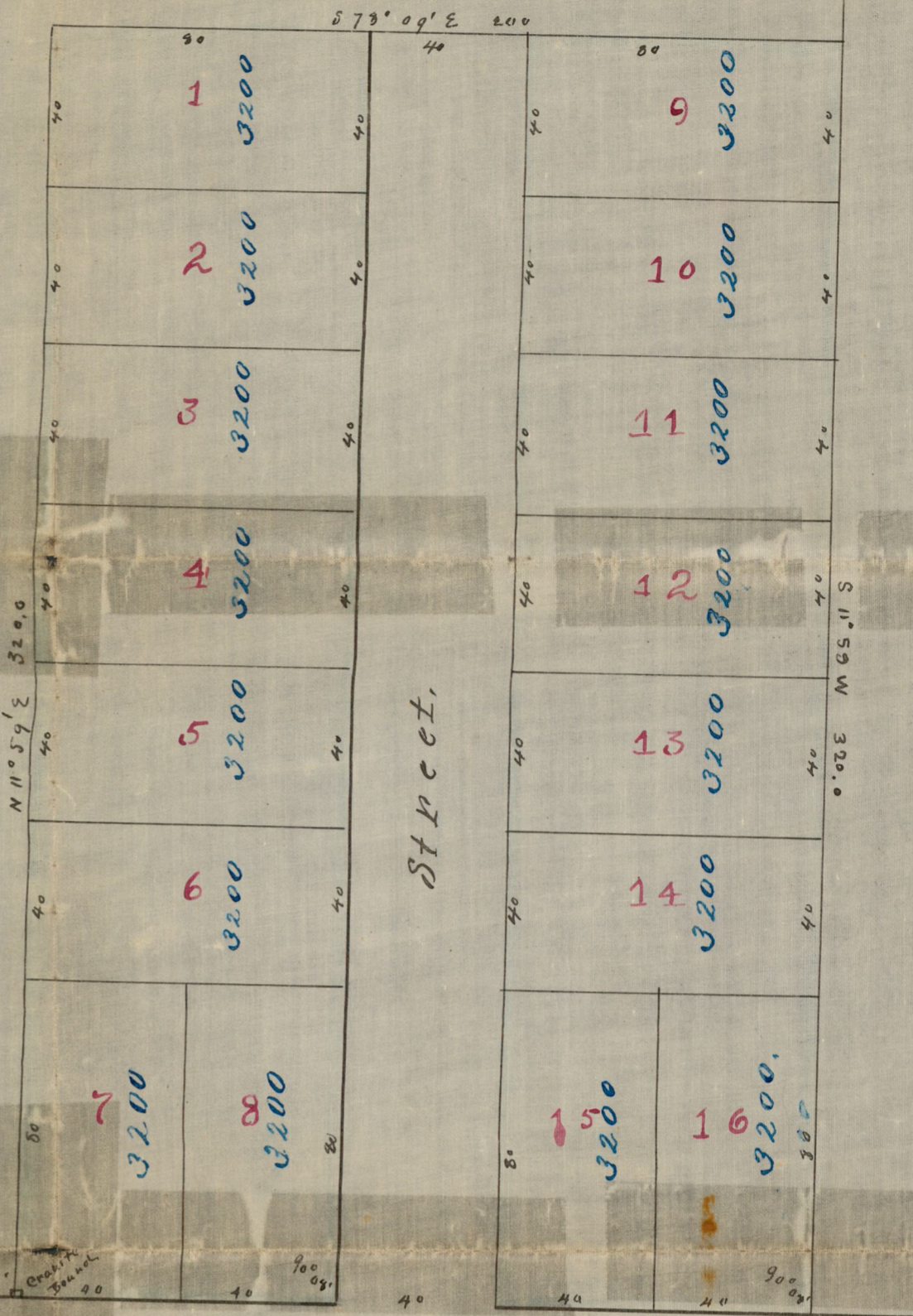
1862

0567

Plat of House Lots
in North Providence, delonging
to
William E. Watson.
surveyed & platted by
Cushing & Co MAY 1872

Scale 40 ft. = 1 inch.

(Card 367)



Chalkstone Road.

Filed May 10th 1872

attest
Royal Lee
Town Clerk

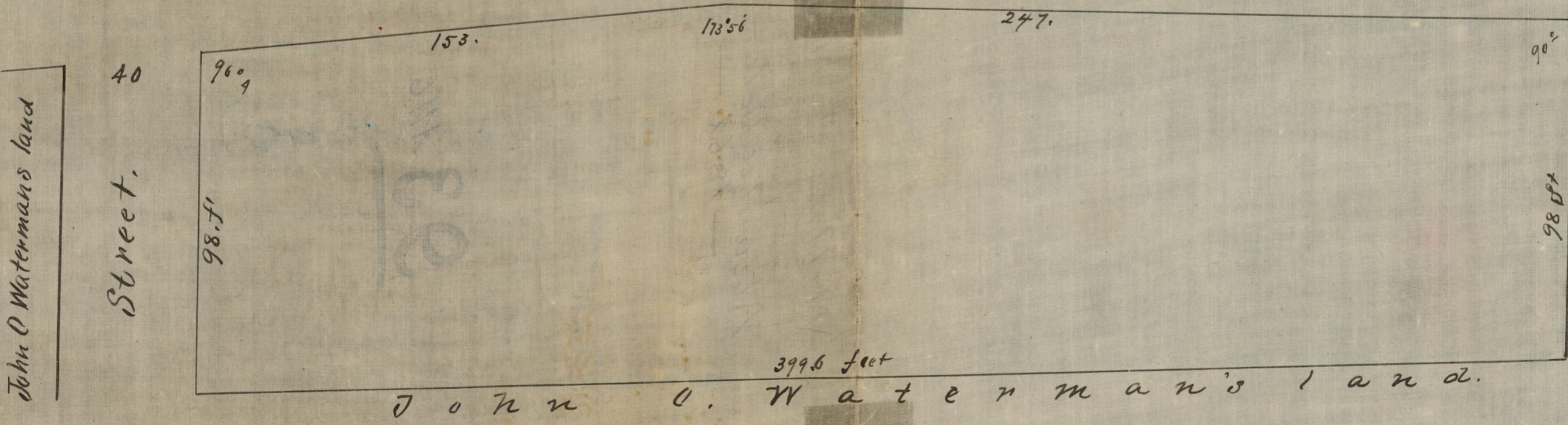
Both from Plat 93
Copied from Plat 93
Paid subject records
Sept. 25 - 1874
Com. to ans. at
H. E.

Foot

Road from Dyerville to Olneyville over Tar Bridge

To Dyerville

to Olneyville



40 ft

436 ± feet to
the southerly
corner of
J. O. Waterman's
land.

Street.

John O. Waterman's
land

South

PLAT of a Lot in North Providence
conveyed by John O. Waterman to the Atlantic DeLaine Co. Dec. 8, 1862
Surveyed & Platted by Cushing & De Witt.

Scale 40 feet to an Inch

West.

(Card 367)

OFFICE No. 549
DRAWER " 72
SHEET " C-16