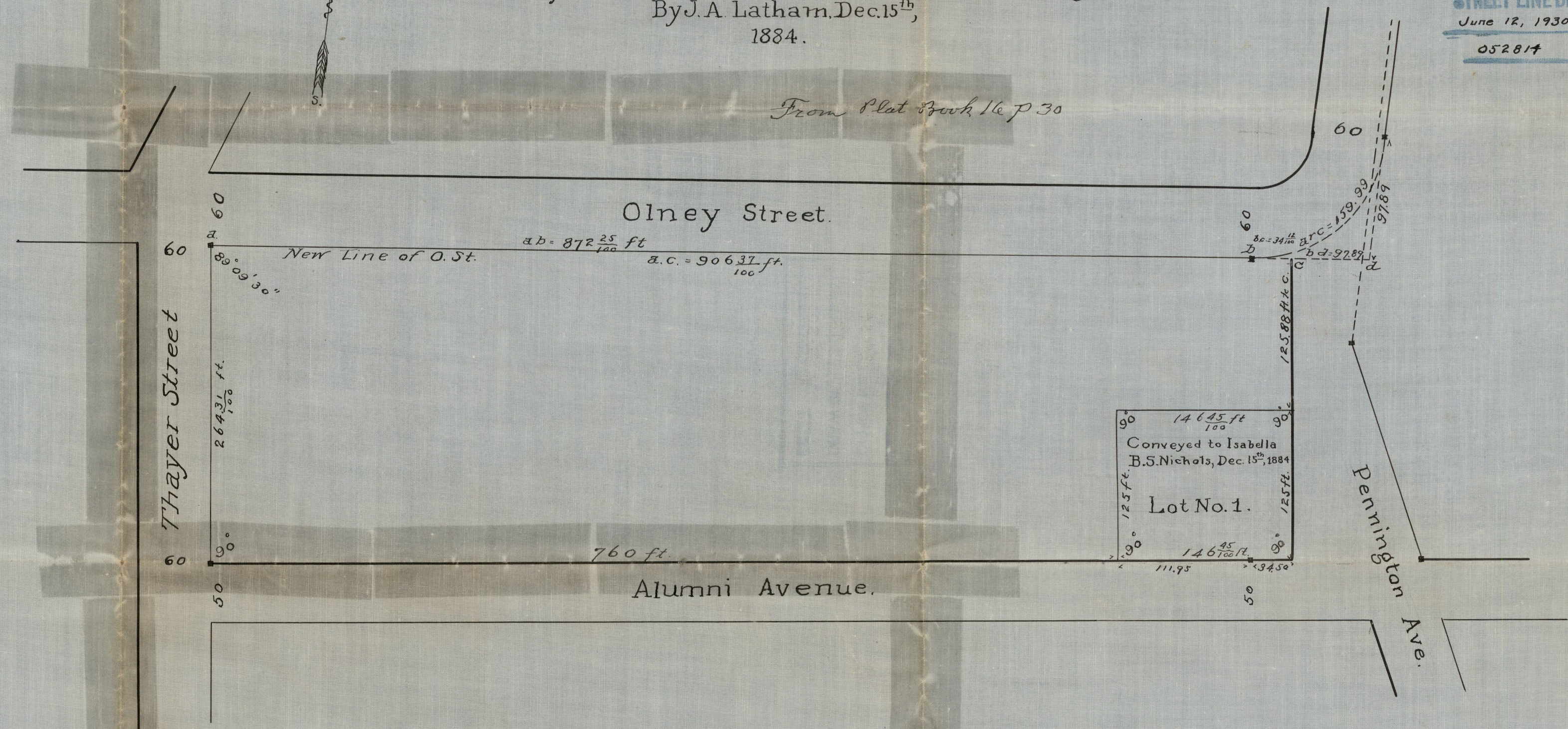


MAP
 of land in Providence, R.I., belonging to the
 Yearly Meeting of Friends for New England.
 By J. A. Latham, Dec. 15th,
 1884.

RECEIVED FOR RECORD AT REQUEST OF
Yearly Meeting of Friends for New England
 WITNESS *Mr. Robt P. Sifford* *Clerk*
 PROVIDENCE, R.I.
 CITY ENGINEER'S OFFICE
 STREET LINE DEPT.
 June 12, 1930
 052814

From Plat Book 16 p 30



OFFICE No. 25084
 DRAWER 72
 SHEET B-30

Scale 80 ft per inch. ■ Denotes Granite Stone Bound.

Copy of Card #554 by F.J.C.