

PROVIDENCE, R.I.
 CITY ENGINEER'S OFFICE
 STREET LINE DEPT.
 January 9, 1928
 050246

Plat
 of land in Providence, R.I. belonging to
Sherman T. Cooper.
 By Frank E. Waterman.
 June, 1913.

Scale 20 ft. to an inch.

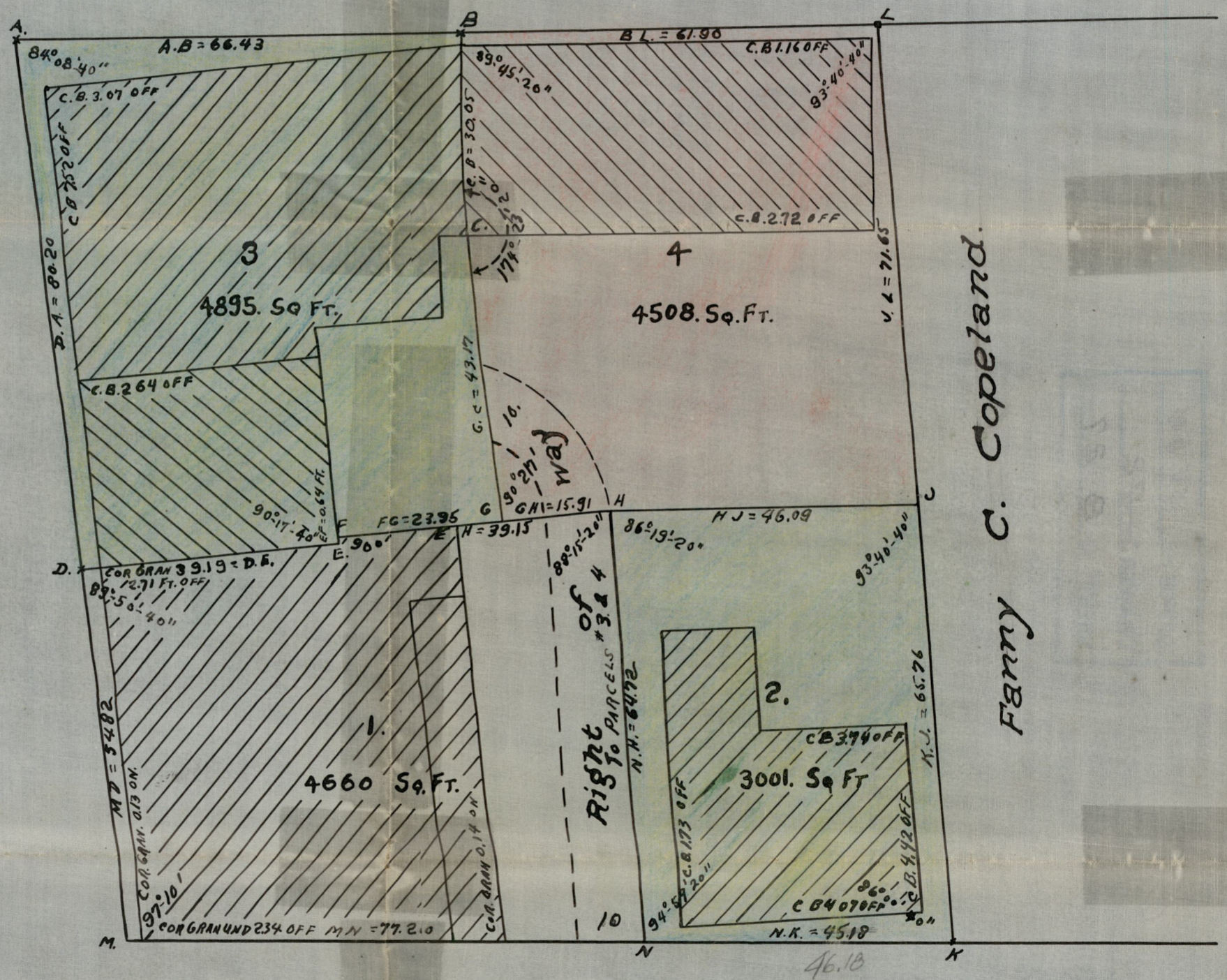


South Court St.

St.

Benefit

Fanny C. Copeland.



Meeting St.

OFFICE No. 23704
 DRAWER 72
 SHEET B-27

Card 999