

Aug. 26, 1927

049901

RECEIVED FOR RECORD

Providence R.I. JUL 5 1927

at 3-10 PM.

Map of
d'Estaing Road from Summit Ave. to Memorial Road
and Second St. and Third St.

from d'Estaing Road to William Randall Heirs Plat
By Waterman Engineering Co.
April, 1927.

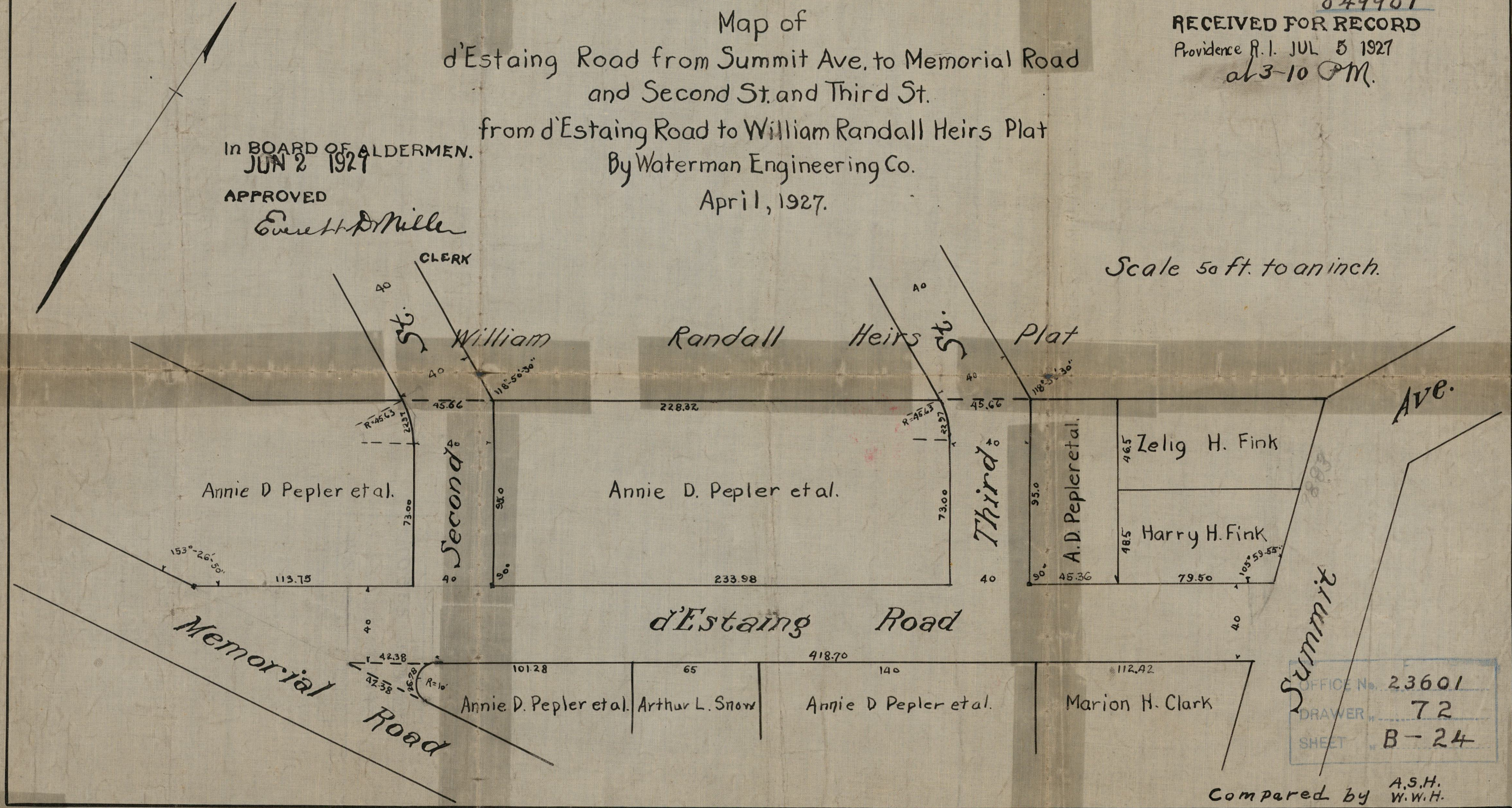
IN BOARD OF ALDERMEN.
JUN 2 1927

APPROVED

Everett D. Miller

CLERK

Scale 50 ft. to an inch.



OFFICE No.	23601
DRAWER	72
SHEET	B-24

Compared by A.S.H.
W.W.H.