

MAY 1856

0432

# PLOT Of Houselots in N Providence near Thurbers Pond belonging to NELSON C. NORTHUP

Surveyed and plotted  
BY  
N B Schubarth  
COPIES OF TENTH WARD PLATS.  
City Engineer's Office.  
No. 31.

May 1st 1856

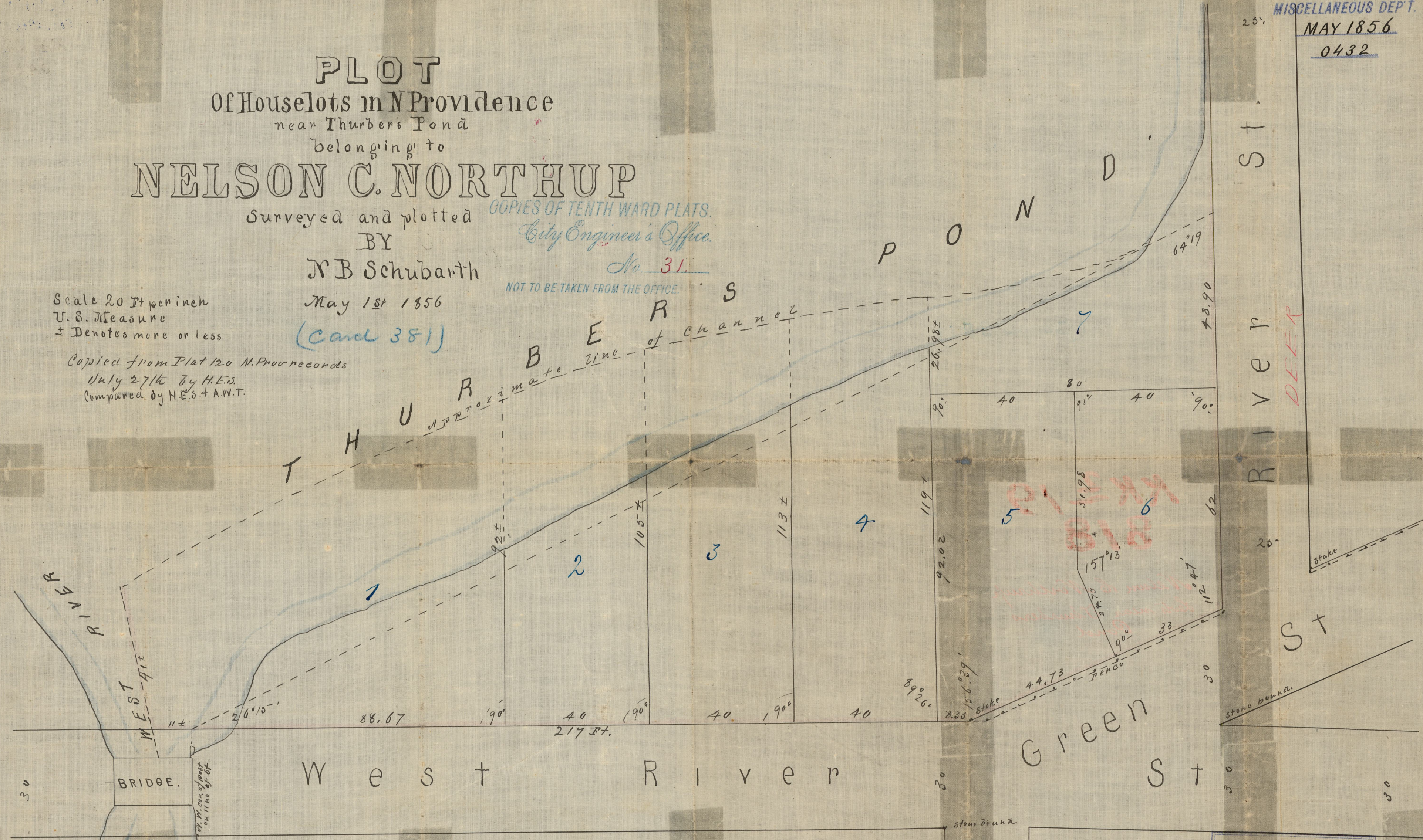
(Card 381)

Scale 20 Ft per inch  
U. S. Measure  
± Denotes more or less

Copied from Plat 120 N. Providence

July 27th by H.E.S.  
Compared by H.E.S. + A.W.T.

NOT TO BE TAKEN FROM THE OFFICE.



Filed August 21<sup>st</sup> 1873  
Allist

Royal Lee  
Surveyor

OFFICE No. 421  
DRAWER ,, 72  
SHEET ,, B-19