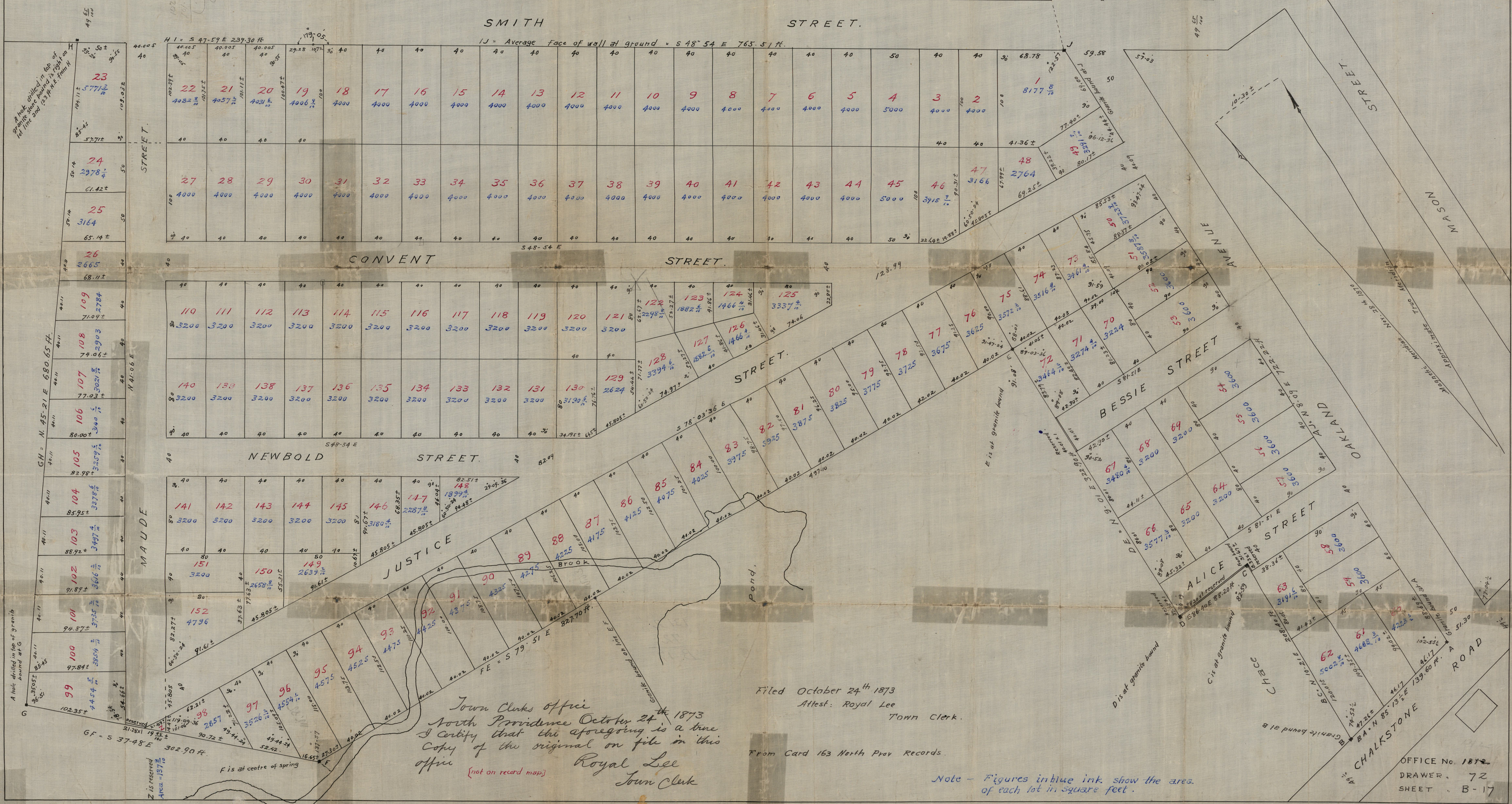


# OAKLANDS PLAT NO. A

## ESTATE OF SARAH B. EATON.

W<sup>m</sup> S. HAINES  
SEPT 1873.

Scale 50 Ft. per inch.  
Meas<sup>r</sup> in U.S. Standart Ft.



Town Clerks Office  
North Providence October 24<sup>th</sup> 1873  
I Certify that the foregoing is a true  
Copy of the original on file in this  
office  
Royal Lee  
Town Clerk

Filed October 24<sup>th</sup> 1873  
Attest: Royal Lee  
Town Clerk.  
From Card 163 North Prov Records.

Note - Figures in blue ink show the area  
of each lot in square feet.