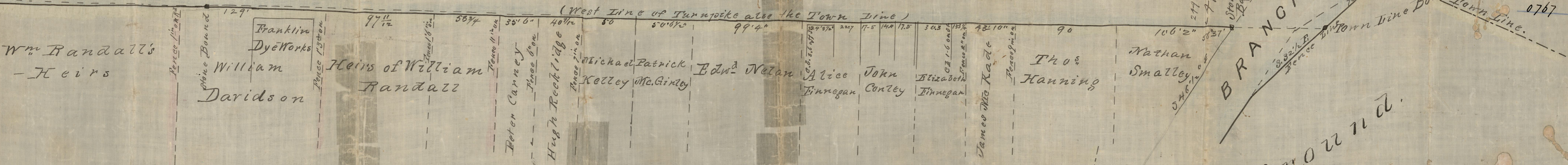


North Burial Ground

S 9° 25' W

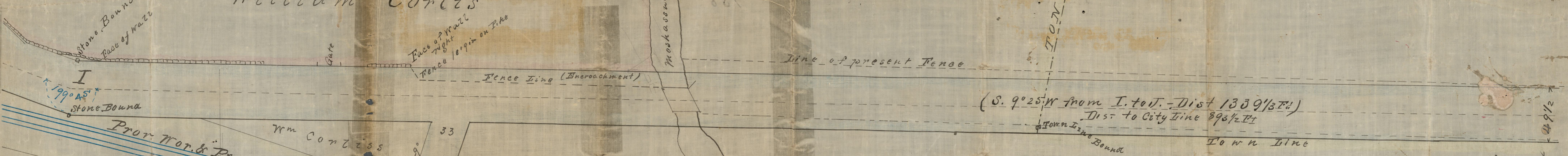
SMITHFIELD TURNPIKE. (S 10° W 948 5/8 Ft from J to K)



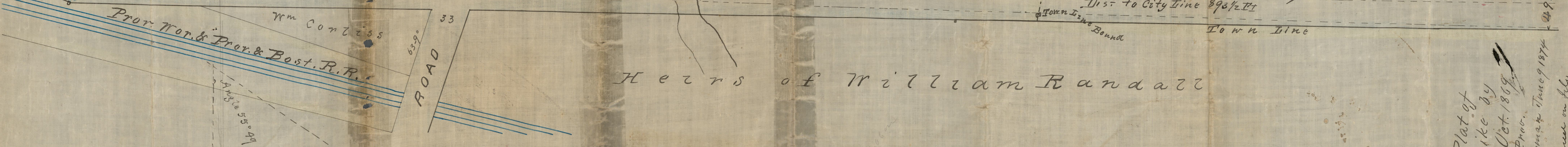
N O R T H P R O V I D E N C E

North Burial Ground

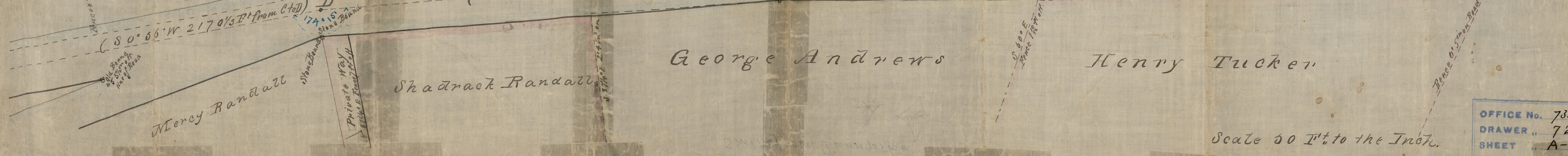
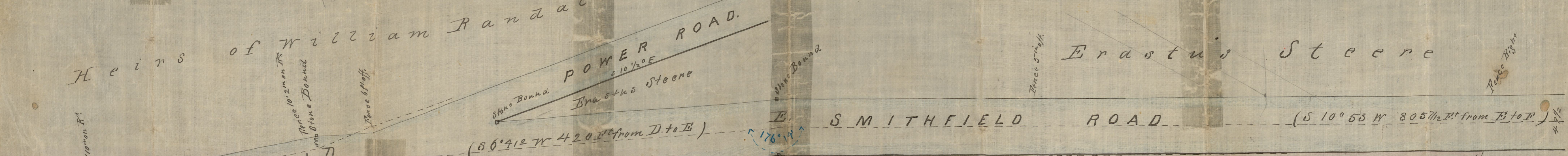
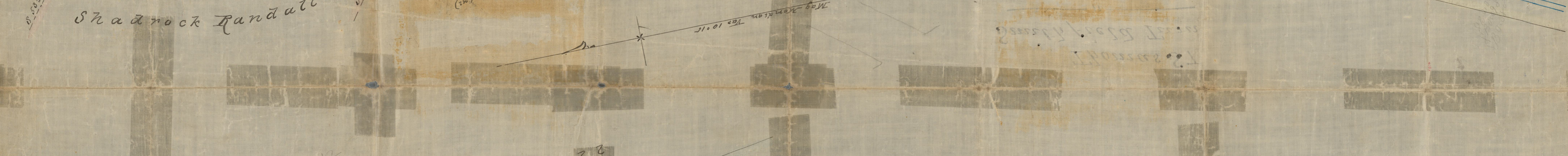
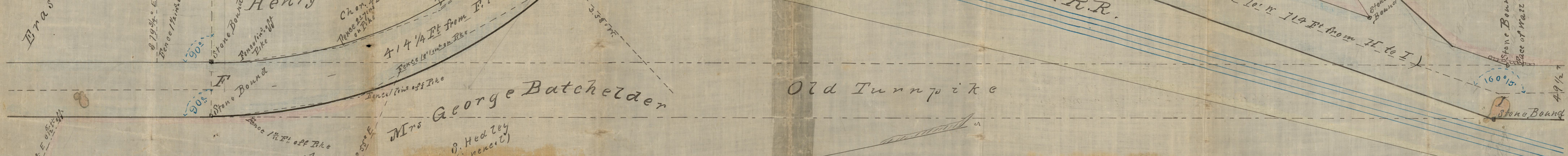
William Corliss



Heirs of William Randall



Copied from Plat of
Smithfield Turnpike by
W. B. Sockaleath Oct. 1869
See Plat Book of Prov.
Copied by H. B. Sherman June 9 1874
Accepted & reduced on file
by the Surveyor April 1870
Attest Royal L. C. Call



ENGINEER'S OFFICE
MISCELLANEOUS DEPT
1869
0767

Scale 50 Ft to the Inch.

PLAT No. 788
DRAWER 72
SHEET A-7