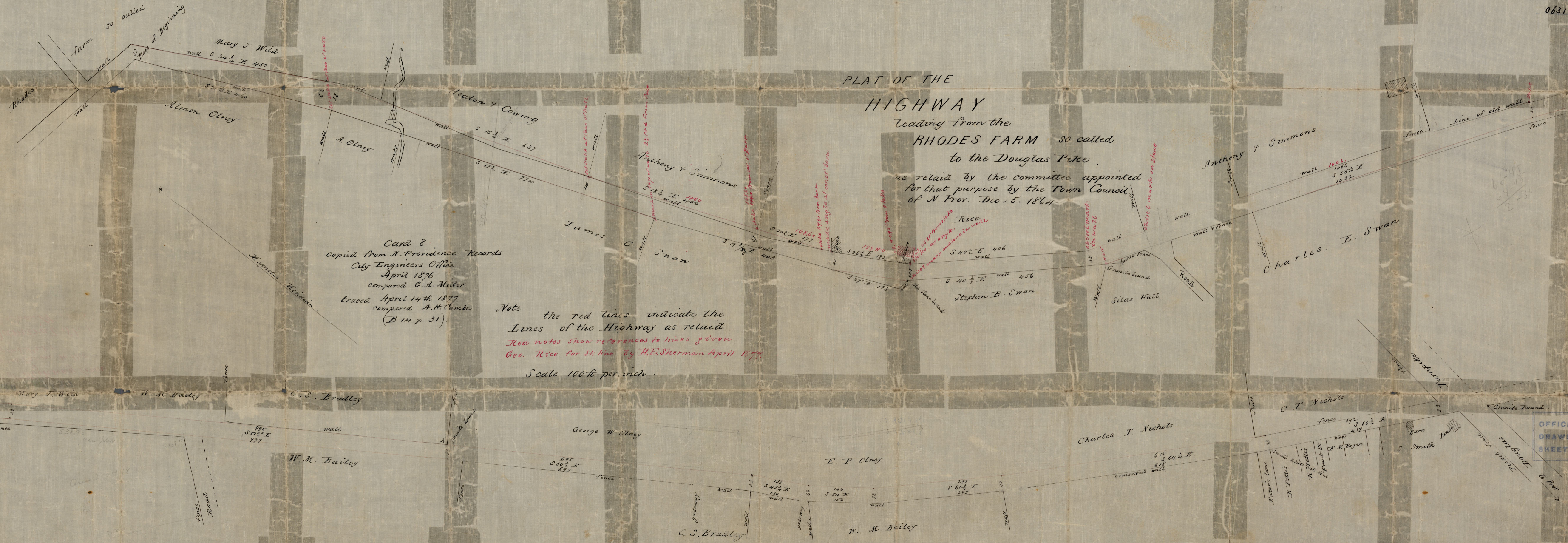


PLAT OF THE
 HIGHWAY

Leading from the
 RHODES FARM so called
 to the Douglas Pike
 as related by the committee appointed
 for that purpose by the Town Council
 of N. Prov. Dec. 5. 1864.



Card 8
 Copied from N. Providence Records
 City Engineers Office
 April 1876
 compared C. A. Miller
 traced April 14th 1877
 compared A. H. Combe
 (B 14 p 31).

Note the red lines indicate the
 Lines of the Highway as related
 Red notes show references to lines given
 Geo. Rice for st. line by H. E. Sherman April 1877.
 Scale 100 ft per inch.

OFFICE No. 611
 DRAWER 72
 SHEET A-22