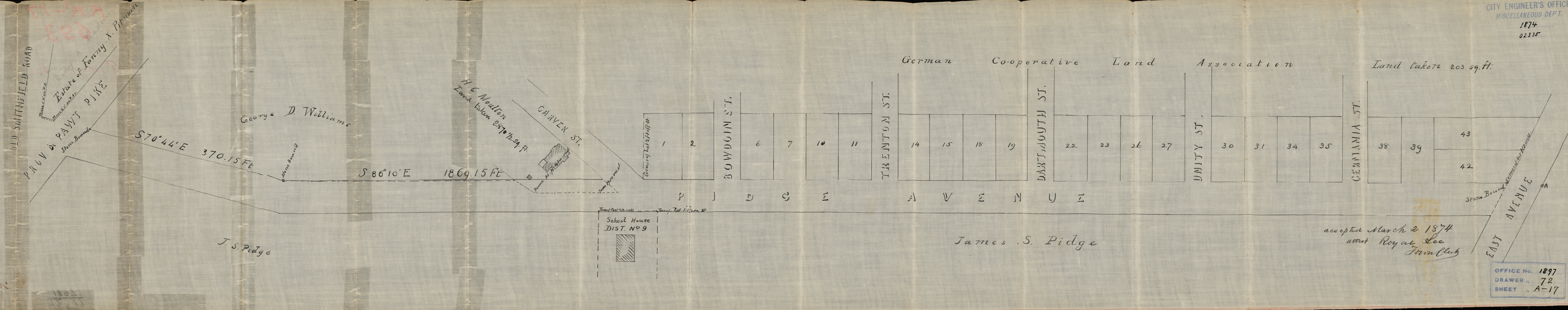


Plat of Pidge Avenue  
 as established by  
 C. P. Adams,  
 A. W. Carpenter,  
 G. B. Vase,  
 Committee

Horizontal Scale 50 feet to the inch  
 Vertical " 8 " "

Copied September 8<sup>th</sup> 1874  
 by Saml. G. Kent

CITY ENGINEER'S OFFICE  
 MISCELLANEOUS DEPT.  
 1874  
 02335



Handwritten notes at the bottom left, including '1891' and '1874'.

OFFICE No. 1897  
 DRAWER " 72  
 SHEET " A-17