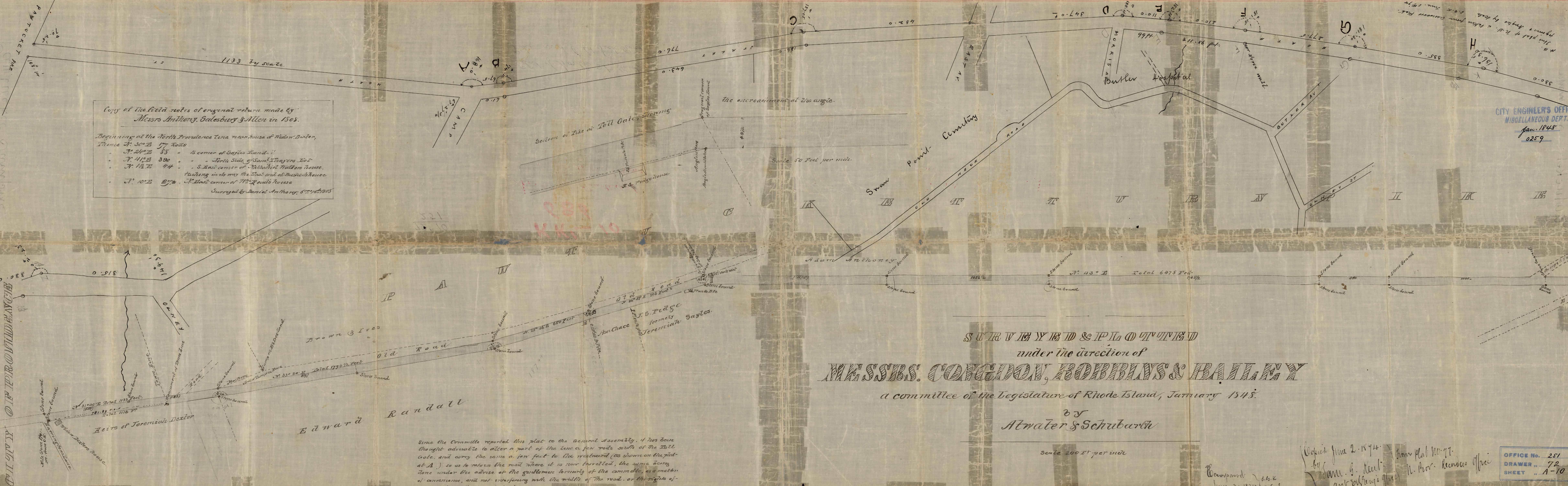


Copy of the field notes of original return made by  
Messrs Anthony, Galesbury & Allen in 1808.

Beginning at the North Providence town near house of Alden Dexter,  
Thence N. 30° E 177 Rods  
" N. 24° E 88 " to corner of Sayles house  
" N. 41° E 390 " North Side of Saml. Trayers lot  
" N. 1 1/2° E 44 " S. East corner of Nathaniel Walters house,  
touching in its way the West end of Duesch's house  
" N. 10° E 27 1/2 " N. East corner of Mrs. Quid's house

Surveyed by Daniel Anthony, 5<sup>th</sup> 1808



SURVEYED & PLOTTED  
under the direction of  
**MESSERS. CONGIDON, BOBBINS & BAILEY**

a committee of the Legislature of Rhode Island, January 1848.

by  
**Atwater & Schubarth**

Scale 200 Feet per inch

Since the Committee reported this plat to the General Assembly, it has been thought advisable to alter a part of the line a few rods south of the Toll Gate, and carry the same a few feet to the westward (as shown on the plat at A) so as to return the road where it is now travelled, the same being done under the advice of the gentlemen formerly of the committee, as a matter of convenience, and not interfering with the middle of the road, or the rights of the State with respect to it.

CITY ENGINEER'S OFFICE  
MISCELLANEOUS DEPT.  
Jan. 1848  
0259

OFFICE No. 251  
DRAWER " 72  
SHEET " A-10

Copied June 2. 1874.  
by  
Edw. G. Keel  
Asst. Surveyor's Office  
From Plat No. 97.  
N. Prov. Receiver's Office

Compared  
June 2. 1874.  
J. G. K.  
J. E. S.