

PLAT OF  
**LOWELL AVENUE**

FROM PLAINFIELD ST. TO POCASSET AVE.

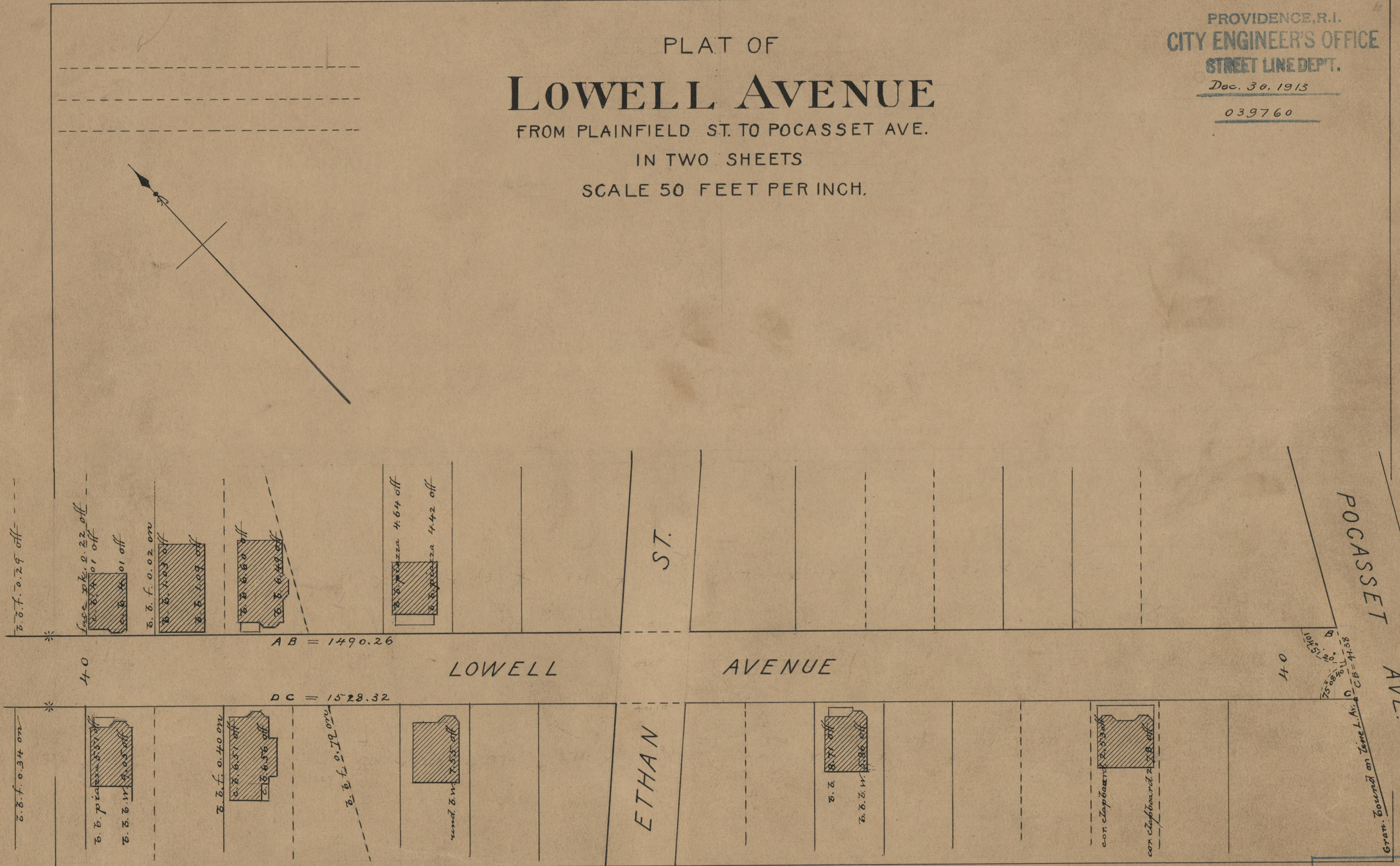
IN TWO SHEETS

SCALE 50 FEET PER INCH.

PROVIDENCE, R.I.  
CITY ENGINEER'S OFFICE  
STREET LINE DEPT.

Dec. 30, 1913

039760



OFFICE No.	19178
DRAWER	71
SHEET	B-98