

PLAT OF  
**DELAINÉ STREET**

FROM VALLEY ST. TO HARRIS AVE.

SCALE 40 FEET PER INCH

DECLARED A PUBLIC HIGHWAY BY RESOLUTION  
 OF THE BOARD OF ALDERMEN

JULY 11, 1918

PROVIDENCE, R.I.  
 CITY ENGINEER'S OFFICE

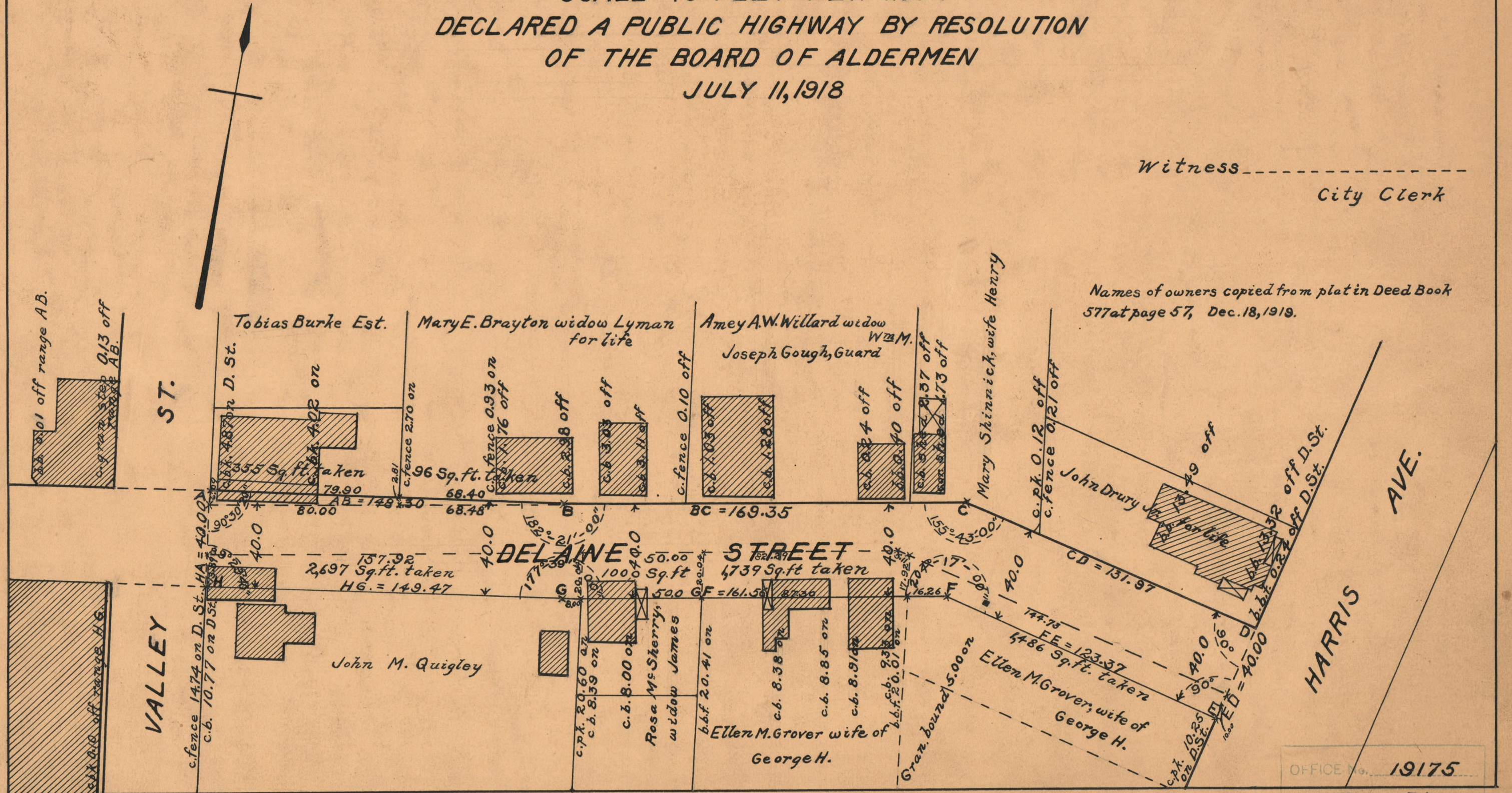
STREET LINE DEPT.

March 8, 1927

049379

Witness \_\_\_\_\_  
 City Clerk

Names of owners copied from plat in Deed Book  
 577 at page 57, Dec. 18, 1919.



OFFICE No. 19175  
 DRAWER " 71  
 SHEET " B-95