

PROVIDENCE, R.I.
CITY ENGINEER'S OFFICE
STREET LINE DEPT.
Oct. 27, 1913

039656

PLAT OF CARLISLE STREET

FROM ELMWOOD AVE. TO ALGER AVE.

SCALE 50 FEET PER INCH.

DECLARED A PUBLIC HIGHWAY BY THE
BOARD OF ALDERMEN

BY REASON OF TWENTY YEARS USE,

September 18, 1913.

418.56
428.37
21876.33
423.465

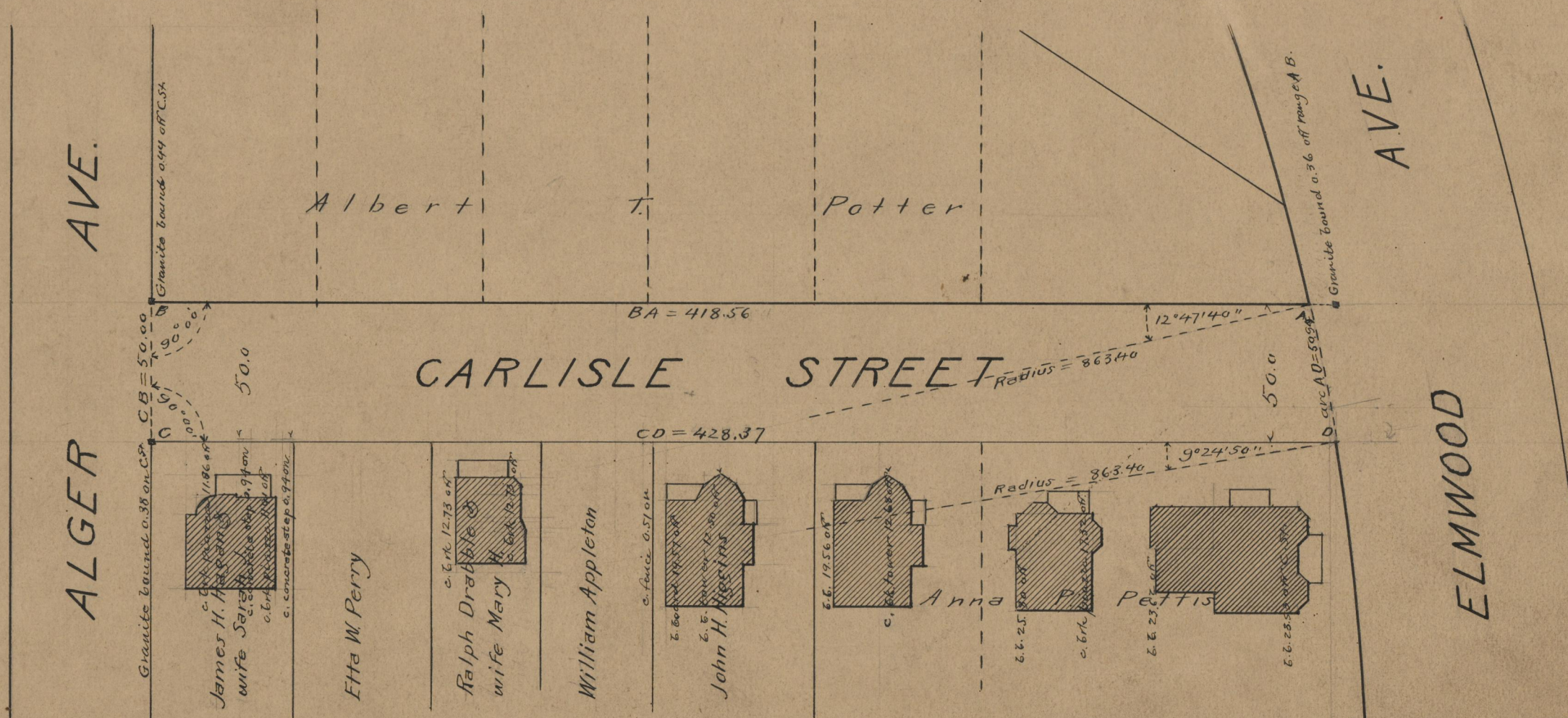
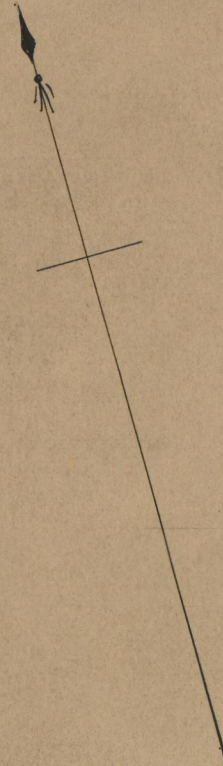
418.56
428.37
21876.33
423.465

Witness -----

City Clerk

Note, The limits of the area declared a public highway are indicated by the letters ABCD.

The lines thus fixed agree with the "Auburndale Plat" upon which Carlisle street was originally platted.



OFFICE No. 19172
DRAWER " 71
SHEET " B-94