

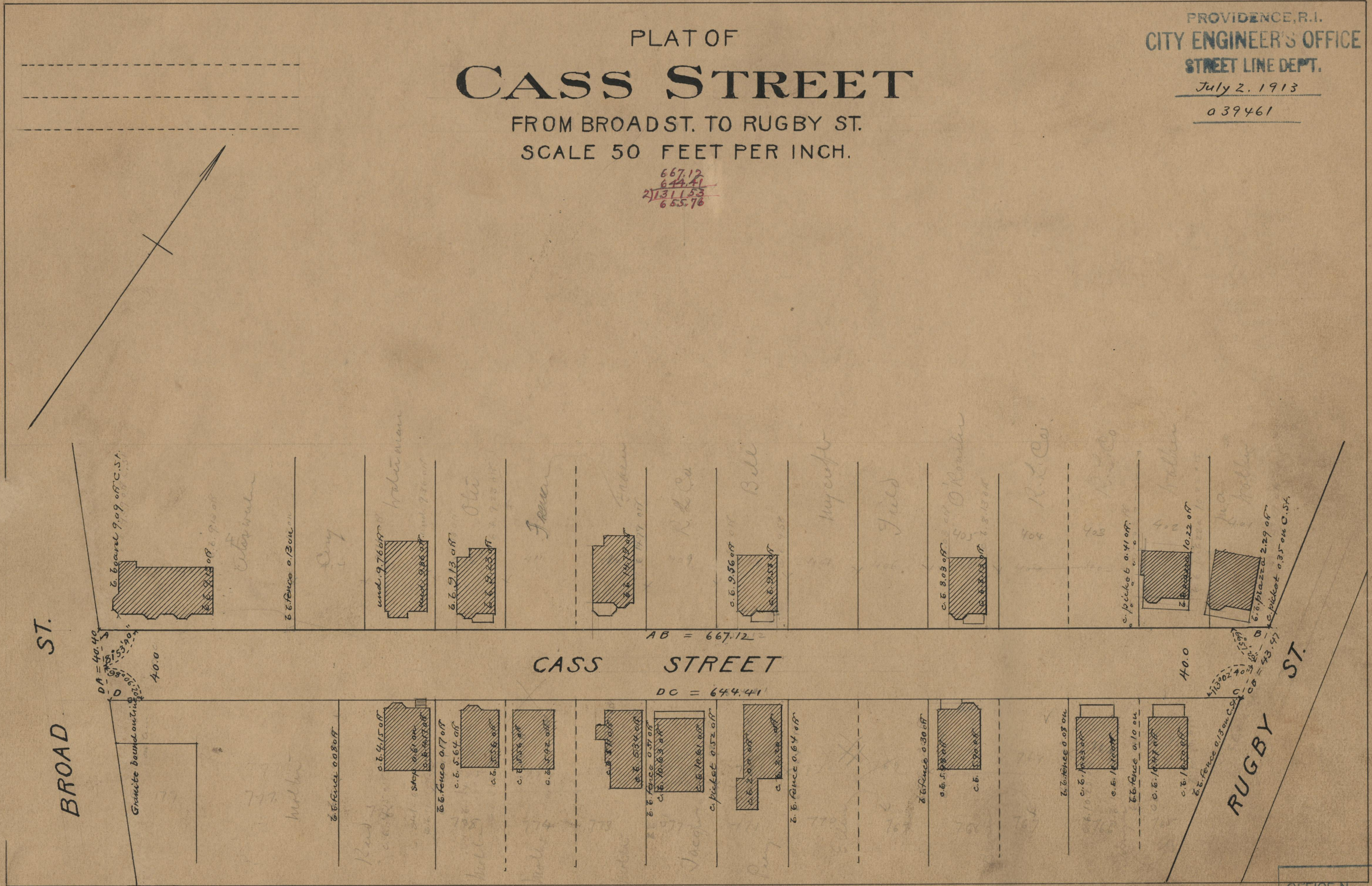
Monroe J. W. and Mary
Gardner, Pierce & Thornley
F.B.B. XXXIV - 83 15th floor Turtle road.

PROVIDENCE, R.I.
CITY ENGINEER'S OFFICE
STREET LINE DEPT.
July 2, 1913
039461

PLAT OF CASS STREET

FROM BROAD ST. TO RUGBY ST.
SCALE 50 FEET PER INCH.

667.12
644.41
2) 1311.53
655.76



OFFICE No. 19085
DRAWER " 71
SHEET " B-89