

PROVIDENCE, R.I.
CITY ENGINEER'S OFFICE

STREET LINE DEPT.

June 30, 1913

039458.

PLAT OF

RUSKIN STREET

FROM SUMTER ST. TO GALLATIN ST.

SCALE 50 FEET PER INCH.

DECLARED A PUBLIC HIGHWAY

BY RESOLUTION OF THE

BOARD OF ALDERMEN,

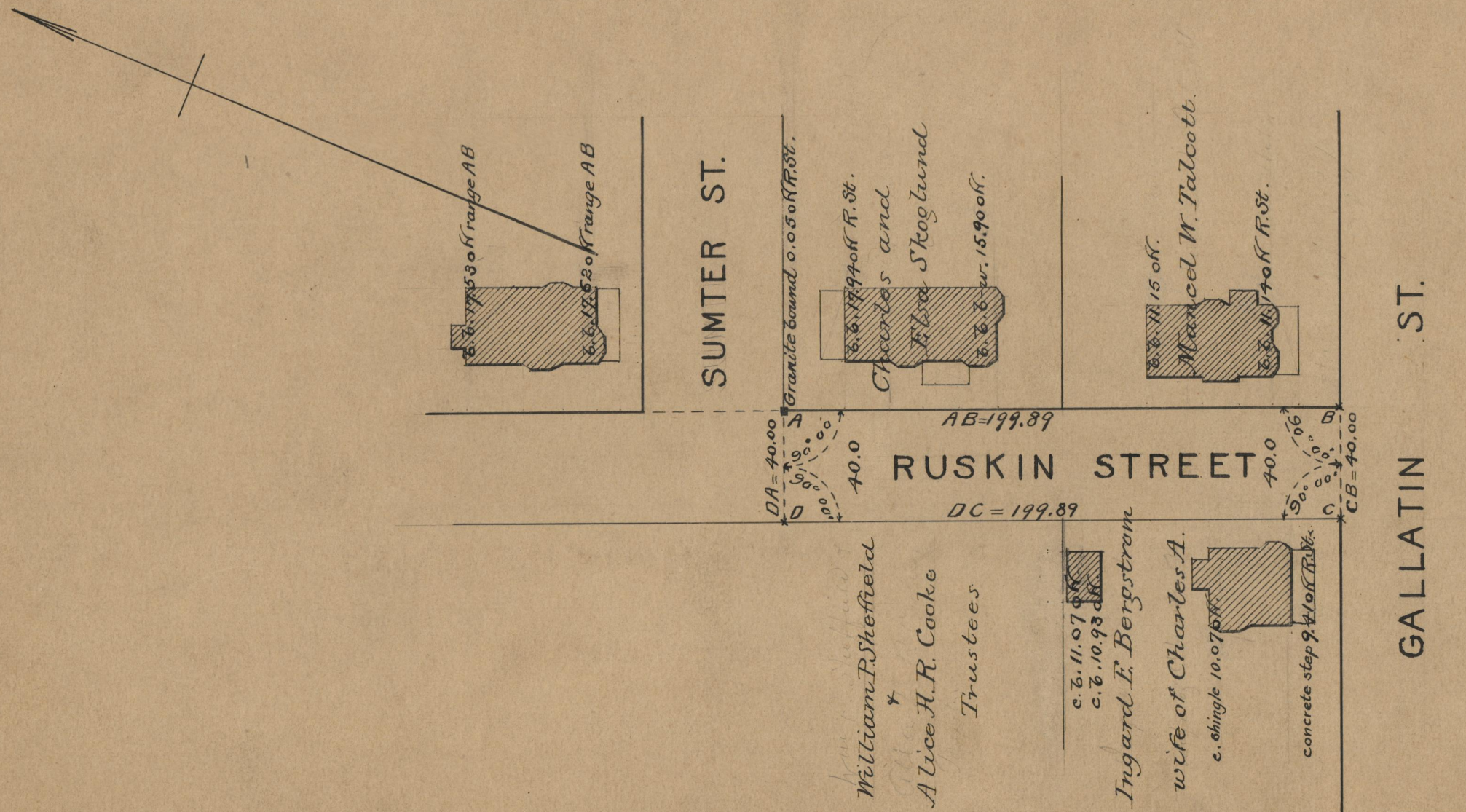
June 19, 1913

199.89

Note, The area declared a public highway is indicated by the letters ABCD.
The lines thus fixed conform to the deed in Deed Book 517, page 413, in the office of the Recorder of Deeds.

Witness, _____

City Clerk.



OFFICE No.	19084
DRAWER "	71
SHEET "	B-88