

D.B. 365-270
John + Gamwell

Kingston ave.

June 30
039454-5
E.S.M. XXXIII-58

Note, The area declared a public highway
is indicated by the letters ABCD.
The lines thus fixed conform to the
deed recorded in Deed Book 365, page
270 in the Office of the Recorder of Deeds.

PROVIDENCE, R.I.
CITY ENGINEER'S OFFICE
STREET LINE DEPT.
June 30, 1913
039454

PLAT OF BRANDYWINE AVENUE

FROM LLOYD AVE. TO PRESIDENT AVE.

SCALE 50 FEET PER INCH.

DECLARED A PUBLIC HIGHWAY

BY RESOLUTION OF THE

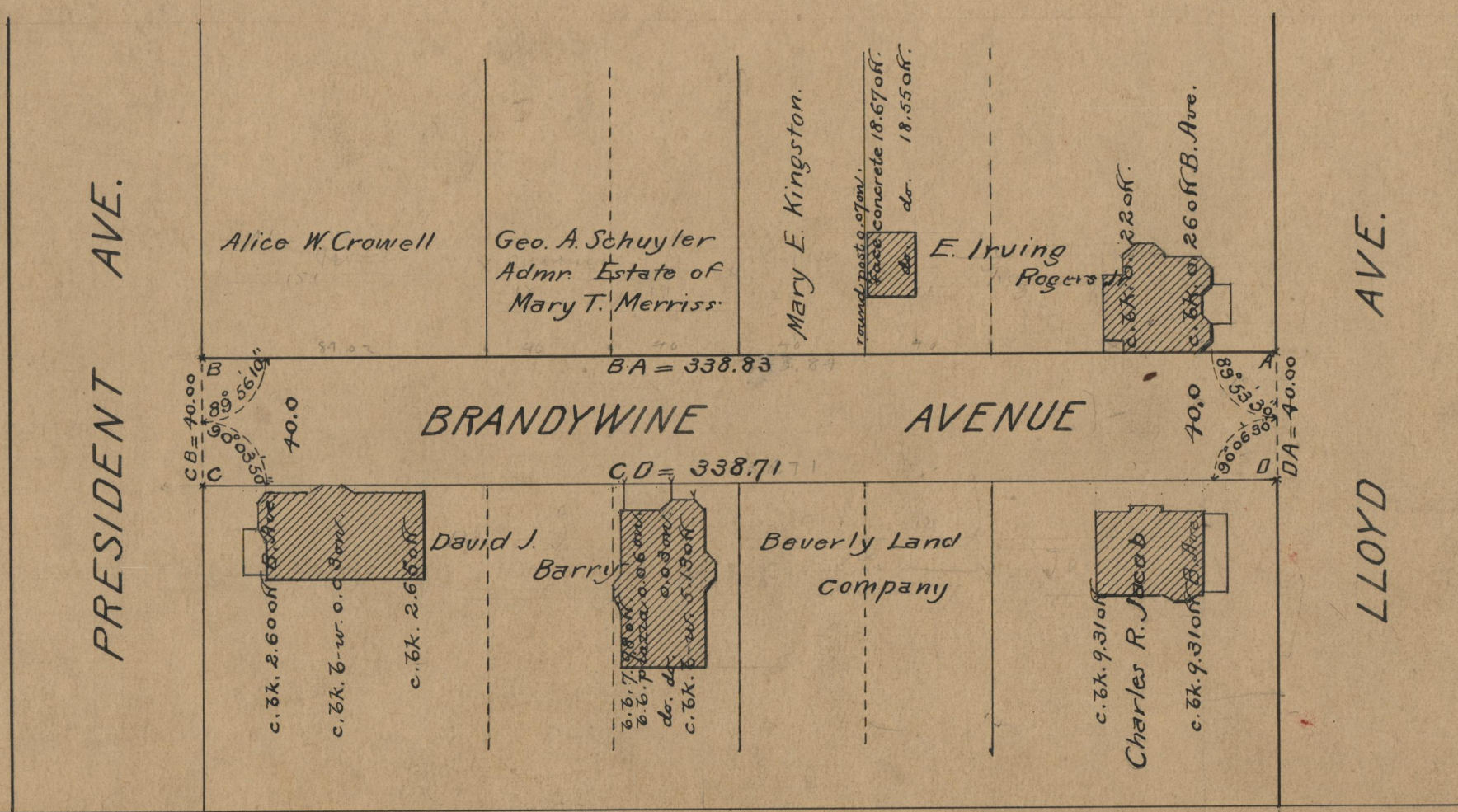
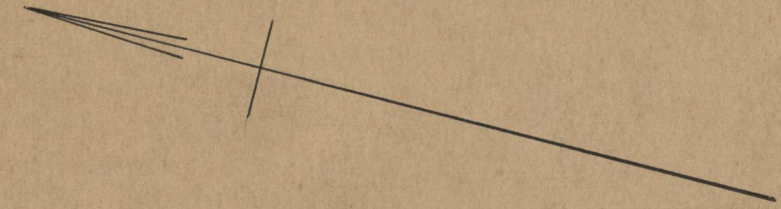
BOARD OF ALDERMEN

May 15, 1913.

Witness, -----

City Clerk.

338.83
338.71
2)677.54
338.77



OFFICE No. 19082
DRAWER " 771
SHEET " BB-86