

Deed 528-422
Cady 533-33Y

E.S.M. XXXIII - 54

PROVIDENCE, R.I.
CITY ENGINEER'S OFFICE

STREET LINE DEPT.

June 30, 1913

039452

Note, The area declared a public highway
is indicated by the letters ABCD.

The lines thus fixed conform to the deeds
in Deed books 431, page 230, 528, pages 311
and 422, and 533, page 338, in the office of the
Recorder of Deeds.

PLAT OF
GROTTO AVENUE
FROM SOUTHERLY LINE OF PENROSE AVE.
TO CENTER LINE OF LORING AVE.

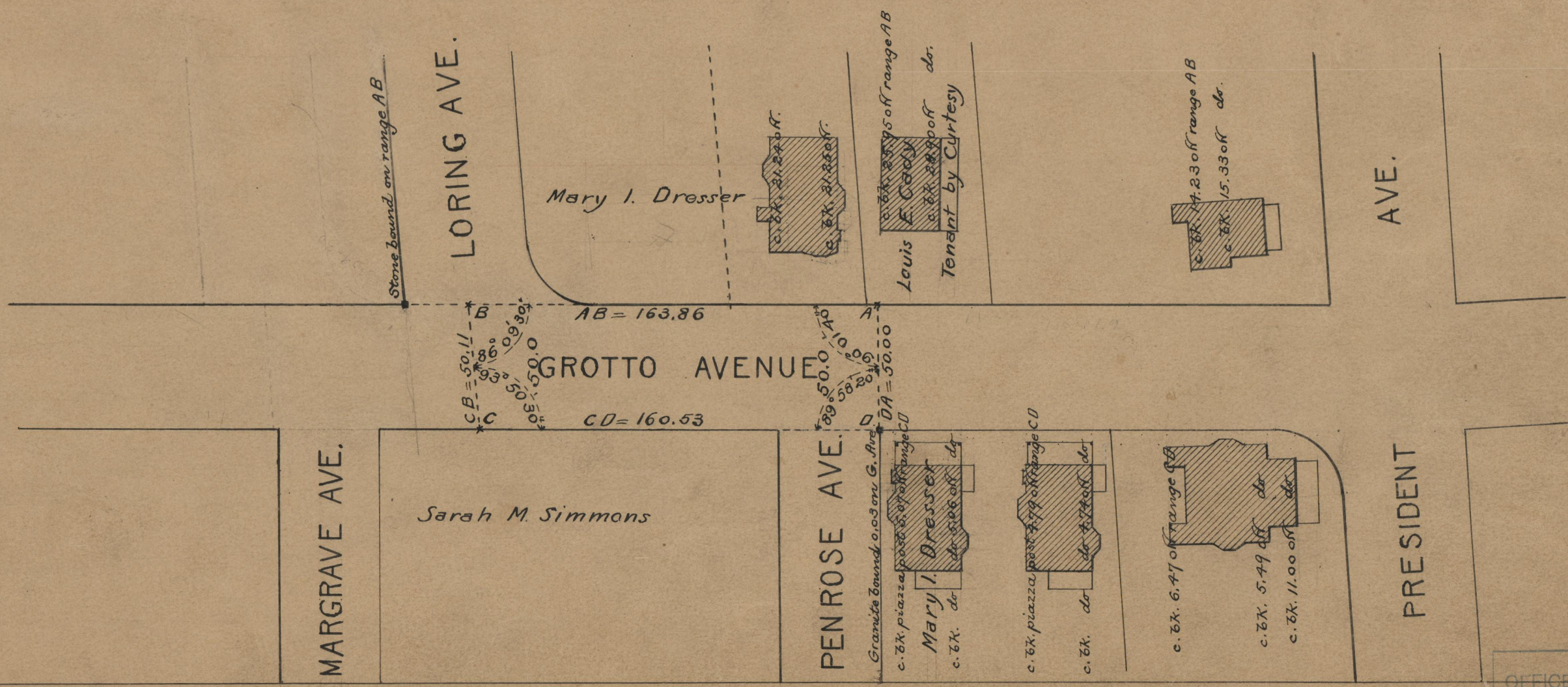
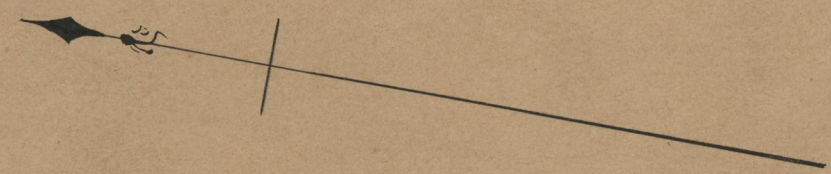
SCALE 50 FEET PER INCH.

DECLARED A PUBLIC HIGHWAY
BY RESOLUTION OF THE
BOARD OF ALDERMEN

April 17, 1913.

163.86
160.53
324.39
162.195

Witness, _____
City Clerk.



OFFICE No. 19081
DRAWER 71
SHEET B-85