

PROVIDENCE, R.I.
CITY ENGINEER'S OFFICE
STREET LINE DEPT.
June 27, 1913
a 39447

Note, The area declared a public highway
is indicated by the letters A B C D,
The lines thus fixed conform to the deeds
recorded in Deed Book 486, page 477, Deed
Book 494, page 399 and Deed Book 528, pages
110, 124 and 128, in the office of the Recorder
of Deeds.

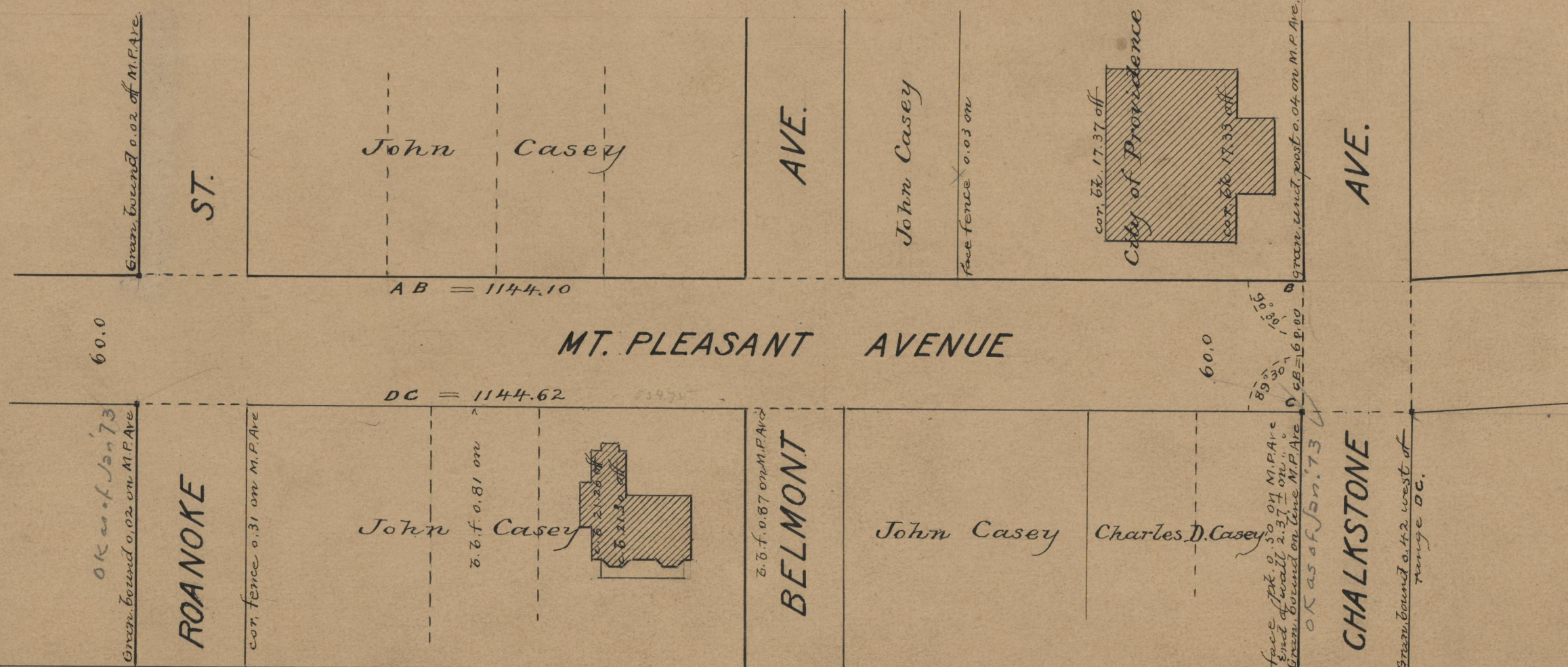
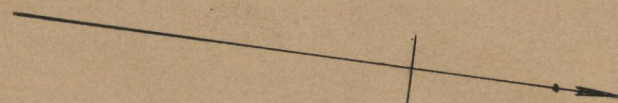
PLAT OF MT. PLEASANT AVENUE

FROM SOUTHERLY LINE OF DOVER ST.
TO CHALKSTONE AVE.
IN TWO SHEETS,

SCALE 60 FEET PER INCH.
DECLARED A PUBLIC HIGHWAY
BY RESOLUTION OF THE
BOARD OF ALDERMEN,

April 17, 1913
1174.36

Witness, _____
City Clerk.



OFFICE No. 19079
DRAWER 71
SHEET B-83